

CORRECTED TO SHIP SMP		
PLACE	DATE	APPROVED
PHILA. NAVAL SHIPYARD	1/14/61	<i>[Signature]</i>
PHILA. NAVAL SHIPYARD	3/11/69	<i>[Signature]</i>
PHILA. NAVAL SHIPYARD	6/21/71	<i>[Signature]</i>

# U.S. SUBMARINE

## SS 343

# BOOKLET OF GENERAL PLANS

SATISFACTORY TO		
PLACE	DATE	COMMANDING OFFICER
PHILA. NAVAL SHIPYARD	13 JAN 1961	<i>[Signature]</i>
PHILA. NAVAL SHIPYARD	3/11/69	<i>[Signature]</i>
PHILA. NAVAL SHIPYARD		

### ORDER OF PLANS

- PLATE NO. 1 COVER
- PLATE NO. 2 GENERAL DIMENSIONS & DATA
- PLATE NO. 3 OUTBOARD PROFILE
- PLATE NO. 4 INBOARD PROFILE
- PLATE NO. 5 MAIN DECK, BRIDGE & TOP OF FAIRWATER
- PLATE NO. 6 PLATFORM DECK
- PLATE NO. 7 HOLD
- PLATE NO. 8 MIDSHIP & CROSS TYPE SECTIONS

NOTE: THIS PLAN DEVELOPED FROM AND SUPERSEDES  
BUSHIPS PLAN NO. 85 343-S0107-234330

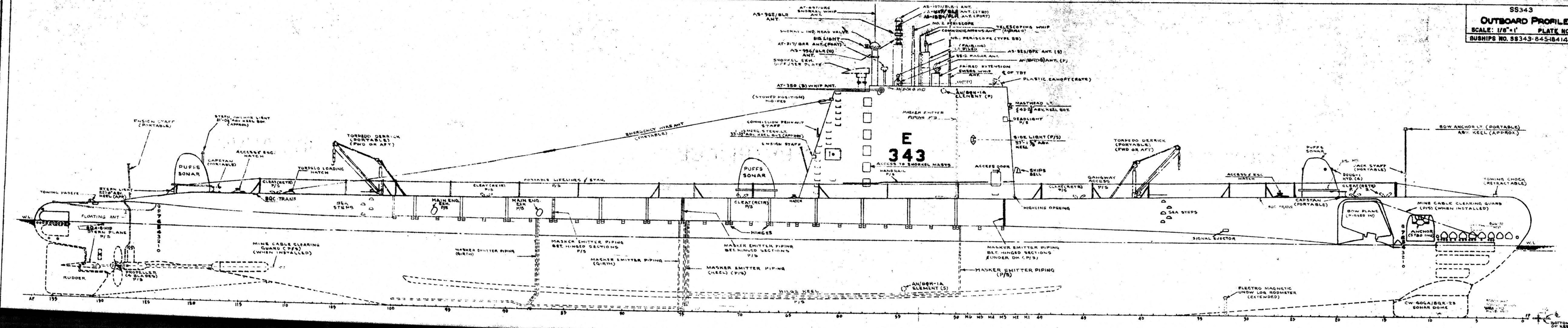
CHARLESTON NAVAL SHIPYARD	
EXAMINED & FOUND CORRECT:	
DATE 12 1963	<i>R. A. B. [Signature]</i>
BUREAU OF SHIPS PLAN NUMBER	
SS343-845-1841408	



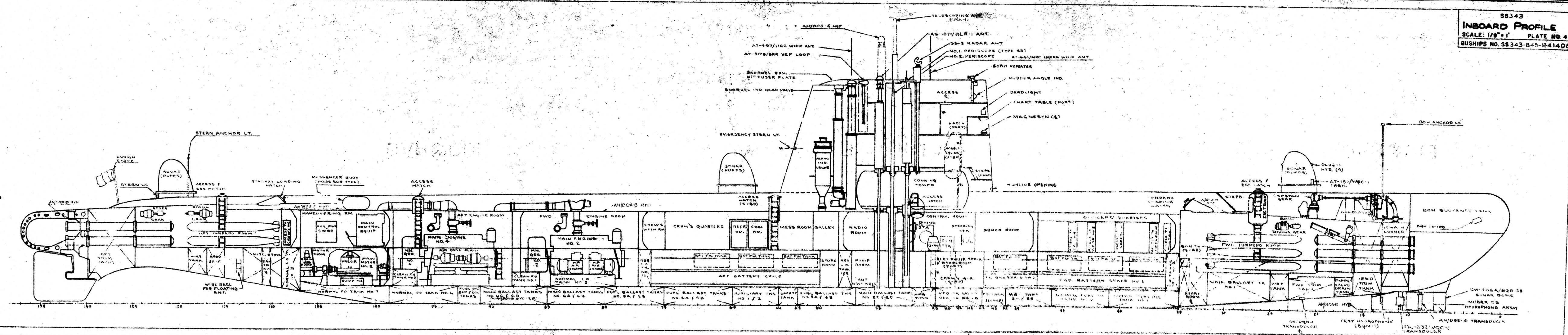
PRINCIPAL DIMENSIONS		HEIGHTS ABV KEEL BOTTOM (BOTTOM OF KEEL 1" BELOW BASE LINE)		CAPACITIES & VOLUMES OF TANKS										ACCOMMODATIONS BERTHS & LOCKERS				COMPARTMENT FLOODING EFFECT TABLE					
LENGTH OVERALL (ACTUAL)	322'-5 1/2"	TOP OF STRENGTH HULL MIDSHIP ON E	19'-10 3/4"	MAIN BALLAST TANKS (100% TANKS)		GALLONS	TONS	FUEL OIL TANKS		GALLONS	TONS	SANITARY TANKS		GALLONS	TONS	LOCATION	BERTHS	LOCKERS	COMPARTMENT	FL. 1	FL. 2	VOL (FT)	LCG AFT OF FP
LENGTH BETWEEN PERPENDICULARS (ACTUAL)	322'-1 1/2"	TOP OF COMM. HQ TOWER PLATING	28'-4 1/2"	NO. 1 MAIN BALLAST		29933	45.40	NO. 1 NORMAL FUEL OIL		11401	43.54	NO. 1 (FWP)		434	1.66	WARDROOM COUNTRY			FWD TORPEDO RM	503.8	12.8	12.70	53.0
PROJECTION FORWARD OF FP	6'-2"	TOP OF BRIDGE DECK	42'-9"	NO. 2A & 2B MAIN BALLAST		1442	4.562	NO. 2 NORMAL FUEL OIL		13122	50.11	NO. 2 (AMIDSHIP)		613	2.57	C.O. STATEROOM	11		FWD BAT. & OFF. QTR	517.4	2.1	14.60	86.5
LENGTH OF STRAIGHT KEEL	169'-10"	TOP OF PAIRWATER PLATING	47'-6"	NO. 2C & 2D MAIN BALLAST		1499	79.82	NO. 6 NORMAL FUEL OIL		19201	98.06	NO. 3 (AFT)		975	1.43	OFFICERS STATEROOMS	7		CONTROL & PUMP RM	529.20	23	12.30	122.20
BREADTH MOULDED	27'-2 3/8"	TOP OF NO. 1 PERISCOPES (RAISED)	64'-7 3/8"	NO. 3A & 3B FUEL BALLAST		18435	74.23	NO. 7 NORMAL FUEL OIL		10907	41.66	TOTAL		1482	5.66				CONNING TOWER	36.4	2.8	2.38	128.0
BREADTH EXTREME (FRS. 68-70, 12'-0" W.L.)	27'-3 3/4"	TOP OF NO. 2 PERISCOPES (RAISED)	66'-6 3/4"	NO. 4A & 4B FUEL BALLAST		24617	94.23	COLLECTING		2993	11.43								AFT BAT. & CREW'S QTR	418.42	58	15.40	166.2
DRAFT SURFACE CONDITION TO UNDERSIDE OF KEEL PLATE (MEAN)	15'-2 3/4"	TOP OF 47'-2 RADAR ANT. (FIXED)	61'-4 1/2"	NO. 5A & 5B FUEL BALLAST		19937	76.05	EXPANSION		2993	11.43	FRESH WATER				PETTY OFFICERS QUARTERS			FWD ENGINE RM	339.2	1.57	12.50	201.8
RATIO-LENGTH TO BEAM	11.29	TOP OF COMM. ANT. ON NO. 1 PERISCOPES (RAISED)	43'-3 3/4"	NO. 6A & 6B MAIN BALLAST		17498	66.89	CLEAN FUEL OIL NO. 1 95% NET CAP.		611		NO. 1 (PORT)		898	9.11	WARDROOM COUNTRY	5		AFT ENGINE RM	319.2	2.2	14	218.4
SHAFTS DIVERGE AT ANGLE WITH E. OF SHIP	1°-32'-48"	TOP OF AT-9901B/BLR. WHIP ANT. (ERECTED)	64'-7 1/2"	NO. 8C & 8D MAIN BALLAST		18730	71.54	CLEAN FUEL OIL NO. 2 95% NET CAP.		618		NO. 2 (PORT)		898	9.11	TOTAL	5		MOTOR & MANUV. RM	299.81	4.4	15.40	291.8
SHAFTS & AT FR 100-ABOVE BASE LINE	7'-1.34"	TOP OF AT-1071/BLR. 1 ANT. (RAISED)	76'-7"	WASTEY TANK		6081	23.23	SUB TOTAL		97846	216.23	TOTAL		8246	30.62	CREW'S QUARTERS			AFT TORPEDO RM	399.37	19.1	3.34	179.0
SHAFTS & AT FR 125-ABOVE BASE LINE	6'-9"	TOP OF AT-1071/BLR. 1 ANT. LOWERED	48'-4 1/2"	TOTAL		151582	578.99	FUEL BALLAST TANKS (RATED CAPACITY)		62474						CREW'S QUARTERS	30	30					
SHAFTS MAKE OUTBOARD AND AFT 0.0492" PER INCH FROM E.		TOP OF AT-911/BLR. ANT. (RAISED)	51'-1 1/2"	VARIABLE BALLAST TANKS (100%)				NO. A VARIABLE FUEL OIL 95% NET CAP.		6283						AFT TORPEDO ROOM	22	23					
SHAFTS MAKE FROM BASE LINE AND FWD 0.0492" PER INCH FROM B.L.		TOP OF AT-371/S ANT.	63'-3 1/2"	AUXILIARY NO. 1		8097	90.77	NO. B VARIABLE FUEL OIL 95% NET CAP.		6283						FORWARD TORPEDO ROOM	15	14					
SHAFTS & FROM E. OF SHIP AT FR 125	9'-8"	TOP OF AN/BRD-5 ANT. (RAISED)	62'-1 1/2"	AUXILIARY NO. 2		8097	90.77	TOTAL		13286	412.30					CREW'S QTR (BELOW CONT RM)	10	22					
SHAFTS & AT FR 100 FROM E. OF SHIP	8'-9.5"	TOP OF AN/BRD-5 ANT. (LOWERED)	49'-0"	NEGATIVE		9097	11.83	LUBRICATING OIL TANKS								TOTAL	77	89					
RUDDER AXIS FORWARD OF A.P.	10'-6"	TOP OF TELESCOPING WHIP (RAISED)	83'-5 1/2"	FORWARD TRIM		8966	24.91	NORMAL LUB OIL NO. 1		1201	4.13	BATTERY FRESH WATER											
NUMBER OF FRAMES	144	TOP OF 441/MRC EMERG. WHIP ANT.	79'-4 1/2"	FORWARD WRT		1294	4.94	NORMAL LUB OIL NO. 2		898	3.06	FWD TANKS		747	2.19								
SCREWS CENTER FORWARD OF A.P.	18'-4 3/8"	TOP OF 441/MRC EMERG. WHIP ANT.	79'-4 1/2"	AFTER TRIM		9229	19.97	NORMAL LUB OIL NO. 3 95% NET CAP.		1097	3.96	AFT TANKS		170	2.87								
FRAME SPACING: FR 10 TO FR 12 - 12', FR 13 TO FR 39 - 24', FR 40 TO FR 62 - 30', FR 63 TO FR 69 - 24', FR 70 TO FR 103 - 30', FR 104 TO FR 124 - 24', FR 125 TO FR 137 - 24', FR 138 TO A.P. - 24'		TOP OF SNORKEL WHIP (RAISED) APPROX.	74'-5 3/8"	AFTER WRT		1924	9.06	RESERV. LUB OIL NO. 1		766	2.62	TOTAL		1517	9.06								
		TOP OF AS-525/BPX IFF/UHF ANT. (RAISED)	61'-2"	VARIABLE FUEL OIL NO. 1A		6614	25.26	RESERV. LUB OIL NO. 2		924	3.17												
		E. OF BOW ANCHOR LIGHT	39'-4 1/2"	VARIABLE FUEL OIL NO. 1B		6614	25.26	TOTAL		4821	16.54												
		E. OF MASTHEAD LIGHT	43'-2 3/8"	TOTAL		146652	178.17	MAIN ENGINE SUMP NO. 1		382	1.31												
		E. OF NO. 6 LIGHT (FWD)	37'-1 1/8"	RATED CAPACITIES & WATER SEAL				MAIN ENGINE SUMP NO. 2 75% NET		382	1.31												
		E. OF EMERGENCY STERN LIGHT	33'-5 1/2"	FUEL BALLAST TANKS				MAIN ENGINE SUMP NO. 3 CAP.		382	1.31												
		E. OF STERN ANCHOR LIGHT	31'-0"	RATED CAPACITY				MAIN ENGINE SUMP NO. 4		382	1.31												
		E. OF STERN LIGHT	22'-0"	GALLONS TONS OIL				TOTAL		1528	5.24												
		E. OF AS-692/BLR ANT. (RAISED)	58'-11"	NO. 3A & 3B FUEL BALLAST		18947	58.78	MAIN MOTOR SUMP TANK 75% NET CAP.		132	0.46												
		E. OF AS-994/BLR ANT. (RAISED)	57'-7"	NO. 4A & 4B FUEL BALLAST		24089	74.81	GRAND TOTAL		6481	22.73												
		E. OF AS-994/BLR ANT. (RAISED)	57'-7"	NO. 5A & 5B FUEL BALLAST		18468	60.43																
		MAIN INDUCTION	36'-5" (AFT)	TOTAL		82474	194.02																



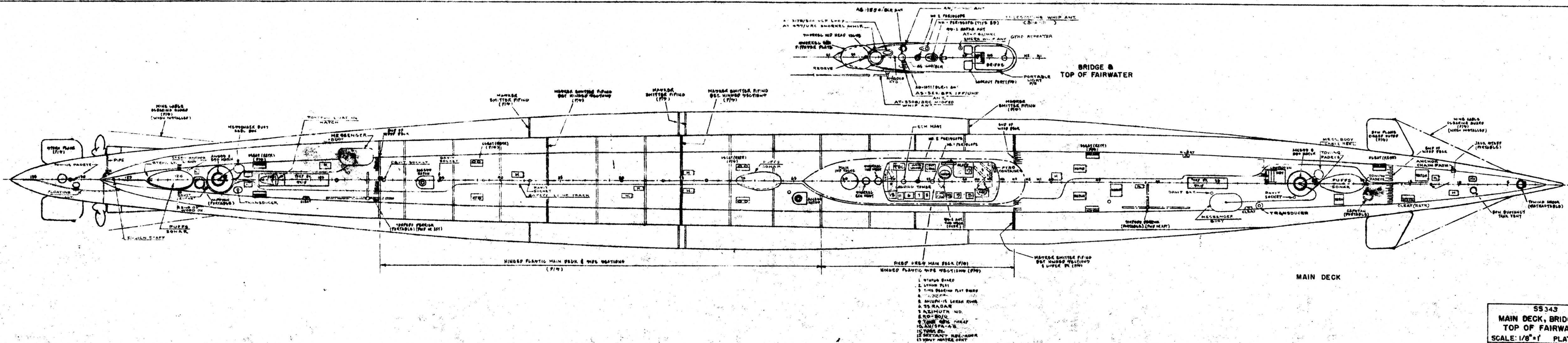
**BUSHIPS NO. 98343-845-18414**











SS 343

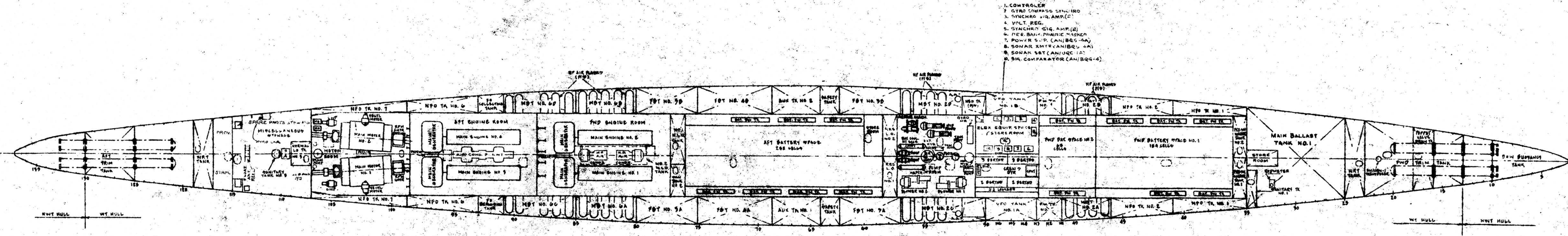
MAIN DECK, BRIDGE &  
TOP OF FAIRWATER

SCALE: 1/8" = 1' PLATE NO. 5









1. CONTROLLER
2. GYRO COMPASS SYNCHRO
3. SYNCHRO SIG. AMP. (2)
4. VOLT. REG.
5. SYNCHRO SIG. AMP. (2)
6. RES. BANK. PRIORITY MASKER
7. POWER SUP. (AN/BQS-4A)
8. SONAR XMT/RYAN/BQS-4A
9. SONAR SET (AN/UQC-1A)
10. SIG. COMPARATOR (AN/BQG-4)



