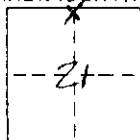


# CORNER RECORD

COUNTY OF MONO T. 3 N R. 25 E MERIDIAN CALIFORNIA

CORNER TYPE: GOV'T. CORNER ☒ MEANDER ☐ RANCHO ☐ CONTROL ☐ OTHER ☐

CORNER IDENTIFICATION - DATE OF VISIT April 12 1989



$\frac{1}{4}$   $\frac{516}{521}$   
1941

CORNER - LEFT AS FOUND ☒ FOUND AND TAGGED ☐ REESTABLISHED OBLITERATED CORNER ☐ REBUILT ☐

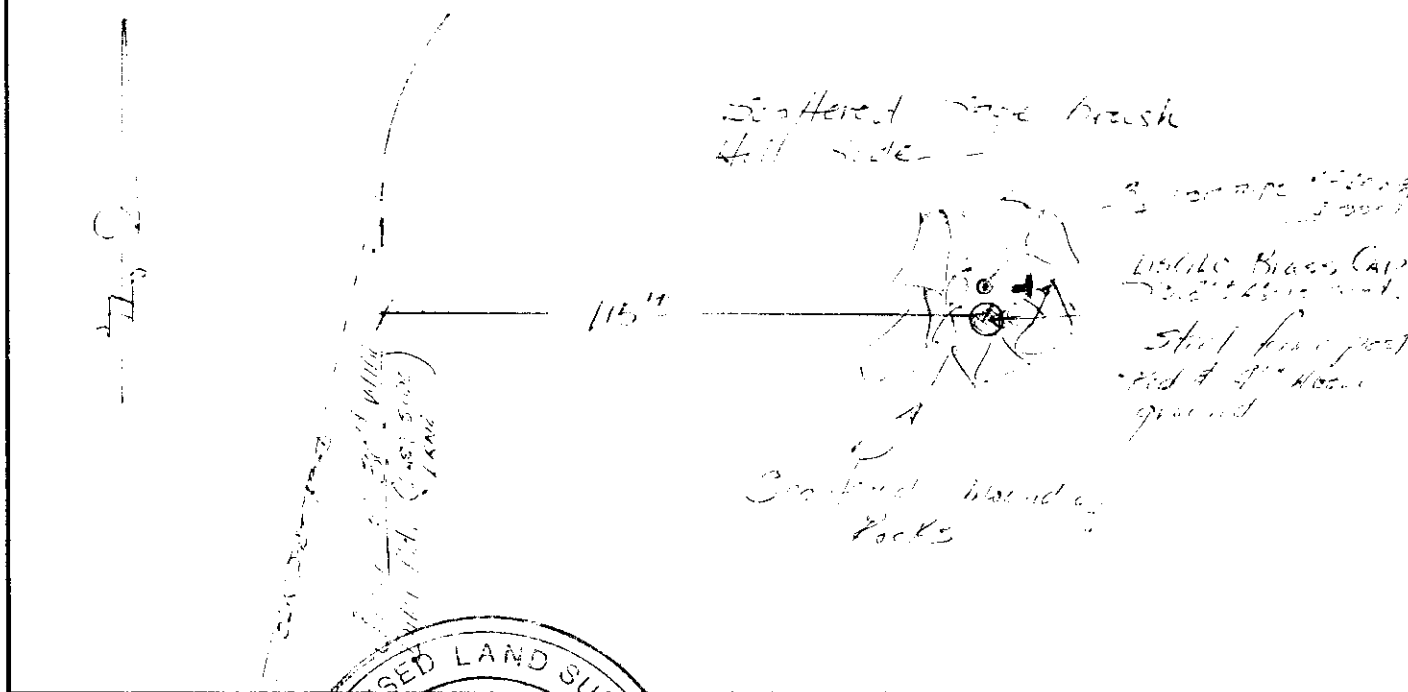
PHYSICAL DESCRIPTION OF CORNER FOUND: EVIDENCE AND METHOD USED TO IDENTIFY OR REESTABLISH  
USGLC Brass Cap in Scattered mound of rocks 115' from 1/4 sec 21 E 1 N  
and shot line post 1/4 sec 21 E 1 N. 115' (measured) East of the  
Center of 1/4 sec 21 E 1 N (measured) East of "Last Side Line"  
Approx. 1/4 mile North of the end of Highway intersecting at 2nd  
2.1 mile of a curve to the East of 1/4 sec 21 E 1 N.

PHYSICAL DESCRIPTION OF MONUMENTS REBUILT OR PERPETUATED

Photo on file in CHIEF'S Office "Survey 1/4 sec 21 E 1 N"  
200 So. Main St. Bishop, Ca. 93314

CALIFORNIA COORDINATE SYSTEM ORDER: FIRST ☐ SECOND ☐ THIRD ☐  
STATIONS USED: NGS (USC & GS) ☐ STATE ☐ COUNTY ☐ OTHER ☐ STATION \_\_\_\_\_ STATION \_\_\_\_\_  
ZONE \_\_\_\_\_ ELEVATION \_\_\_\_\_ NORTHINGS (Y) \_\_\_\_\_ EASTINGS (X) \_\_\_\_\_

SKETCH: (Include reference tie or witness points, remarks and topo of area)



## SURVEYOR'S CERTIFICATE

THIS CORNER RECORD WAS PREPARED BY ME OR UNDER MY  
DIRECTION IN CONFORMANCE WITH THE LAND SURVEYORS ACT  
ON April 12 1989 NG-4468

SIGNED: [Signature]  
Exp. 4/3/90

L.S. or R.C.E. No.:

SEAL

## COUNTY SURVEYOR'S CERTIFICATE

THIS CORNER RECORD WAS RECEIVED 3-12 1990  
AND EXAMINED AND FILED 5-4 1990

BY: [Signature]

TITLE: MONO COUNTY SURVEYOR

DOCUMENT No. 9N23-21-3

STATEMENT ON BACK OF SHEET

YES ☐ NO ☒