

SPECIFICATIONS	
Copying process Type Printing resolution Gradations Memory Original platen type Copying speed First copy time Warm-up time Available original size Available copy paper size (max./min.)	Indirect electrostatic photographic method Console 2400 dpi × 600 dpi (with smoothing) 256 RAM: 32 MB + HDD (standard) RADF (standard) 55/65/81 cpm (A4/B5/A5R) Approximately 3.2 seconds Approximately 160 seconds Maximum A3 Drawer: A3/A5R Tandem LCF: A4 Stack feed bypass: A3/A5R Optional External LCF: A4 Drawer/Tandem LCF/Stack feed bypass/ Optional external LCF: 64 – 209 gr/m <sup>2</sup> Tandem LCF (2,500 sheets)/2 drawers (2 × 500 sheets)/Stack feed bypass (Smart bypass, 100 sheets)/External LCF (Option, 4,000 sheets) Maximum 7,600 sheets 1 to 9,999/ten key input Zoom: 25 – 400% in 1% increments/decrements Original/Copy size: A3, B4, A4, A5, Other Automatic/manual (11 Steps) Mechanical 7-digit total counter Heat roller: twin IH method Maximum 2.0 kW (220 V – 240 V) 698 mm × 777 mm × 1,213 mm 210 kg <b>Stackless ADU (Automatic Duplexing Unit)</b> Paper size Paper weight <b>RADF (Reversing Automatic Document Feeder)</b> Stack capacity  Original setting Available paper size Available paper weight
Thickness of paper	
Paper supply	
Paper capacity Multiple copying Reproduction ratio	
Exposure control Counter Image fusing method Power consumption Dimensions (W × D × H) Weight	
Stackless ADU (Automatic Duplexing Unit) Paper size Paper weight	
RADF (Reversing Automatic Document Feeder) Stack capacity	
Original setting Available paper size Available paper weight	
OPTIONS	
Finisher MJ-1017 Trays Paper size Staple type	2 A3 – A5R Multi position (4 kinds) (Front-1 position-slant, rear-1 position-parallel, rear-1 position-slant, center-2 positions-parallel) STAPLE-700: 50 sheets (A4/B5, 60 – 80 gr/m <sup>2</sup> ), 30 sheets (A3/B4/A4R/FOLIO, 60 – 80 gr/m <sup>2</sup> ) Non-sort: Top/bottom bin – 2,000 sheets (A5R – A4) or 294 mm, 1,000 sheets (A4R – A3) or 147mm Sort/Group: Top/bottom bin – 2,000 sheets (A5R – A4) or 294 mm, 1,000 sheets (A4R – A3) or 147mm Staple sort: Top/bottom bin – 50 sets, 110 mm or 750 sheets (A5R – A4), 50 sets, 74 mm or 500 sheets (A4R – A3) 616 mm × 630 mm × 1,023 mm 42 kg
Staple capacity	
Tray stack capacity	
Dimensions (W × D × H) Weight	
Finisher MJ-1018 (Saddle-stitch finisher) Trays Paper size Staple type	2 A3 – A5R Multi position (4 kinds) (Front-1 position-slant, rear-1 position-parallel, rear-1 position-slant, center-2 positions-parallel) STAPLE-700: 50 sheets (A4/B5, 60 – 80 gr/m <sup>2</sup> ), 30 sheets (A3/B4/A4R/FOLIO, 60 – 80 gr/m <sup>2</sup> ) Same as MJ-1017 Paper size: A4R – A3 (60 – 80 gr/m <sup>2</sup> ) Staple capacity: 15 sheets/60 pages (STAPLE-600) Tray stack capacity: 25 sets (less than 5 sheets), 20 sets (6 – 10 sheets), 10 sets (11 – 15 sheets), 80 gr/m <sup>2</sup> 616 mm × 630 mm × 1,023 mm 62 kg
Staple capacity	
Tray stack capacity Saddle stitch	
Dimensions (W × D × H) Weight	
Finisher MJ-1021 (Saddle-stitch finisher with 100 sheets stapling) Trays Paper size Staple type	2 A3 – A5R Multi position (4 kinds) (Front-1 position-slant, rear-1 position-parallel, rear-1 position-slant, center-2 positions-parallel) 100 sheets (A4/B5, 60 – 80 gr/m <sup>2</sup> ), 60 sheets (A3/B4/A4R/FOLIO, 60 – 80 gr/m <sup>2</sup> )
Staple capacity	
(Note) Launch date may vary by region	
Windows® and Windows® 95/98/Me/2000/NT® 4.0/XP are registered trademarks of Microsoft Corp. NetWare® is a registered trademark of Novell, Inc. Adobe® PostScript® 3™ is registered trademark of Adobe Systems, Inc. Macintosh® is a registered trademark of Apple Computer, Inc. All other brand and/or product names are trademarks of their respective owners.	

DISTRIBUTED BY

TOSHIBA TEC UK Imaging Systems Ltd  
Toshiba Court, Weybridge Business Park,  
Addlestone Road, Weybridge, Surrey KT15 2UL

Phone 01932 841600  
Fax 01932 852755  
www.toshiba.co.uk/imaging

Hole Punch Unit MJ-6003 (for all finishers) Type and hole location	MJ-6003N: 2 or 3 holes (depending on paper size) Distance of punched holes – 2 holes: 70 mm, 3 holes: 108 mm MJ-6003E: 2 holes Distance of punch – 80 mm MJ-6003F: 4 holes Distance of punch – 80 mm MJ-6003S: 4 holes Distance of punch between 1st and 2nd: 21 mm 75 mm × 586 mm × 373 mm 4.9 kg
Dimensions (W × D × H) Weight	
(Note) Hole patterns may vary by region	
Insertor Unit MJ-7001 Stack capacity Paper size Available paper weight Sheet setting Dimensions (W × D × H) Weight	100 sheets (80 gr/m <sup>2</sup> ), 20 – 30 sheets (256 gr/m <sup>2</sup> ) A4/A4R/A3/B4/B5/304.8 mm wide paper 60 – 256 gr/m <sup>2</sup> Face up 533 mm × 612 mm × 1,072 mm 20 kg
Large Capacity Feeder MP-4003 Paper supply Paper size Type Dimensions (W × D × H) Weight	Maximum 4,000 sheets A4 (64 – 209 gr/m <sup>2</sup> ) Front loading type 326 mm × 599 mm × 617 mm Approx. 40 kg
Finisher Guide Rail KN-1017	Recommended for offices with carpets and other soft flooring to keep the finisher firmly in place. It also serves as a support when separating the finisher from the main unit.
Print Controller GA-1140 Processor Memory (RAM) System OS Printing speed Printing resolution Printer drivers	Intel® Pentium® III Class 500 MHz 128 MB (Std.)/256 MB (Max.) Linux 55/65/81 ppm (A4/B5/A5R) 2400 dpi × 600 dpi (with smoothing) Windows® 95/98/2000/Me/NT® 4.0/XP, Macintosh®** *OS 8.6/9.2 only Parallel (IEEE1284, ECP), Ethernet (10/100 BaseT) TCP/IP, IPX/SPX, Ether Talk PCL6® (Std.), Adobe® PostScript® 3™ (Opt.)
Interface Protocols Print language Hard disk drive GE-1060 (10 GB)	
Scan accelerator board GE-1110	(Including Adobe® PostScript® 3™, Command WorkStation™ 4.0, DocBuilder™, Fiery FreeForm™)
Scan accelerator board GE-1110	(For scanning features such as Scan to Stored Job/Scan to Mailbox/Scan to DocBuilder Pro™)
Adobe® PostScript® 3™ font GE-1020 Expansion Memory GC-1080 (128MB) DocBuilder Pro™ 1.5 GB-1160 Document Controller GL-1020 Processor Memory (RAM) System OS Hard disk drive Printing speed Printing resolution Print drivers	Intel® Celeron™ 566 MHz 256 MB Linux 20 GB 55/65/81 ppm (A4/B5/A5R) 2400 dpi × 600 dpi (with smoothing) Windows® 95/98/2000/Me/NT® 4.0/XP, Macintosh®, Unix®** *PostScript PPD only **Solaris, HP-UX, AIX, Linux USB, Ethernet(10/100 BaseT), IEEE802.11b TCP/IP, IPX/SPX, Ether Talk PCL5e, PCL6®, PostScript 3 (compatible) Scan to File/Scan to Email/Scan to Internet Fax/ TWAIN scanning (standard)
Interface Protocols Print language Scanning features	

TOSHIBA ORIGINAL SUPPLIES	
	It is recommended that only supplies made or designated by TOSHIBA be used for this machine in order to get optimum results.
ISO 9000 Series Certification	
This highly acclaimed certification is recognised worldwide as a measure of top quality. It is awarded to manufacturers for facilities and practices meeting strict standards set by the Geneva based International Standardization Organization. Four copier sales affiliates and four Toshiba manufacturing facilities where copiers, accessories, supplies and parts are produced have received certification to date — another good reason to count on Toshiba.	
Design and specifications are subject to change without notice. The colour(s) of the actual product may vary from the colour(s) shown in this brochure. All rights reserved. No part of this material may be used or reproduced in any manner whatsoever without permission. Copyright © 2002 Toshiba TEC Corporation	
As an ENERGY STAR Partner TOSHIBA TEC CORPORATION has determined that this multifunction device model meets the ENERGY STAR guidelines for energy efficiency.	



# The Speed Solution

ACCELERATED IMAGING SYSTEM  
**e-STUDIO550/650/810**



**TOSHIBA**

COP????

The features you want at the speed you need.

Every workplace has its own unique requirements. That's why Toshiba e-STUDIO550/650/810 provides a range of solutions at your choice of three speeds – 55, 65 or 81 ppm/cpm. Have it your way with Toshiba e-STUDIO550/650/810.

## Copying and Printing Solution

(With Print Controller GA-1140)

This streamlined network solution focuses on providing high quality, high volume output at high speed. Fast and efficient with versatile features and remote PC control, it benefits everyone in your office. A space saving design further contributes to office productivity and options can be added when new needs arise.

*(Please see pages 4 and 5 for more details.)*

## Document Management Solution

(With Document Controller GL-1020)

With the network document management solution, you can control your office's entire document workflow, including input, transmission, editing, output and filing. Comprehensive management is made possible by the GL-1020's versatile scanning functions, Internet connectivity, document editing functions and the high performance print engine of the e-STUDIO550/650/810.

*(Please see pages 6 and 7 for more details.)*

## Professional Print Solution

(With Print Controller GA-1140 + HDD + Scan Accelerator Board)

Document production for central reproduction departments within corporations, or for paying customers, requires the ultimate in quality, flexibility and control. This solution delivers the professional tools and output the industry demands. Versatile finishing, thick paper handling, tab insertion, genuine Adobe® PostScript® 3™, cluster printing, direct PDF printing, DocBuilder™ and more come with this system.

*(Please see pages 8 and 9 for more details.)*



ACCELERATED IMAGING SYSTEM  
**e-STUDIO550/650/810**



# Copying and Printing Solution

The right choice for businesses seeking:

High volume copying and printing

Versatile finishing capabilities

High quality and dependability

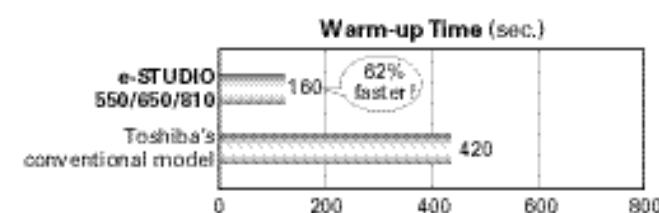
Improved network productivity

## Accelerated output

### Quick from the start

The e-STUDIO550/650/810 offers accelerated high quality, high volume output in network environments. With a choice of speeds up to **81 cpm/ppm**, and a **first copy delivery of 3.2 seconds**, it is definitely a champion performer. Toshiba further enhances network productivity with an extremely short **warm-up time of approx. 160 seconds** from start-up and near instantaneous recovery from energy saving/sleep mode. Made possible by the first **Twin IH fuser technology**

in the copier and printer industries — technology initially developed by Toshiba — this short warm-up or recovery time helps conserve energy and minimise frustration.

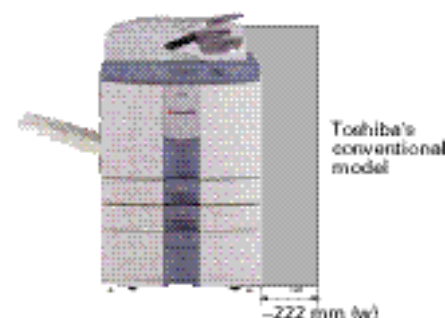


## Compact and hassle free

### Space and time savings

The e-STUDIO550/650/810's compact dimensions require minimum floor space, in fact its footprint ranks among the smallest in this class. With the Toshiba e-STUDIO550/650/810, you can always count on minimum downtime and peak productivity. You'll spend less time replenishing and servicing the e-STUDIO550/650/810, because its paper capacity is extra large and its long-life consumable parts require less frequent replacement (consumable parts last approx. 15% longer than those of

conventional Toshiba copiers, making them among the longest lasting in the industry). Additional time savings are yours via **Job Reservation**. During the brief warm-up period or while the e-STUDIO550/650/810 is busy with one job, this feature lets you input settings and originals for up to five other jobs. As soon as warm-up is complete or the current job is finished, the e-STUDIO550/650/810 automatically begins the next job without delay.



## Efficient paper handling

### Maximum 7,600 sheet capacity

Marathon print runs are handled with ease by the generously equipped e-STUDIO550/650/810. Its **maximum paper supply of 7,600 sheets**, with five paper sources, consists of a tandem Large Capacity Feeder (LCF) containing 1,250 sheets × 2, two drawers of 500 sheets each, a 100 sheet Stack Feed Bypass and an optional 4,000 sheet LCF.



### RADE/Stackless ADU

A **Reversing Automatic Document Feeder (RADF)** automates the feeding of single or double-sided originals, allowing unattended copying. With its 100 sheet feeding capacity per setting, it handles up to 200 pages per stack. This process can be repeated up to nine times in simplex mode or four times in duplex mode for a total of 1,000 or 500 sheets per job, respectively. Toshiba's stackless **Automatic Duplexing Unit (ADU)** generates duplexed copies/prints by employing a simplified, stackless paper path. Together, these standard features reduce manual labour and accelerate the entire document production process.

### Electronic Sorting

Electronic sorting boosts speed and efficiency when high volume collating of multi-page documents is desired. It can be performed on an original set of up to 1,000 pages per job.

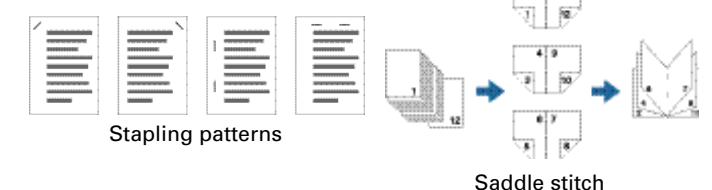
### Versatile finishing

A variety of finishing features allow you to make choices that best meet your needs. These features may be controlled remotely via network PC or from the e-STUDIO550/650/810's LCD touch panel screen.

### Finishers

Professionally finished documents are easily obtained by adding one of three optional finishers available from Toshiba. All three **hold up to 4,000 sheets** and allow **multi-position stapling**. The basic **MJ-1017** handles stapling for up to 50 sheets while the **MJ-1018**, in addition to stapling, can **saddle stitch magazine sorted documents** to simplify the production of handouts, booklets and other in-house publications. The **MJ-1021\*** offers the same features as the MJ-1018, but can **staple up to 100 sheets**.

\*Launch date may vary by region.



### Hole punch unit

A Hole Punch unit is available for use with either optional finisher. It punches 2, 3 or 4 holes to prepare documents for binding, tablets or other uses.

\*Hole patterns may vary by region.

## Other convenient features

### Copying features

• Auto Job Start • Positive/Negative Reversal • X-Y Zoom • Mirror Image • 2-in-1, 4-in-1, 8-in-1 (Duplex) • Job Memory (4 kinds)

### Printing features

• Private printing • Water mark • N-up printing (16 pages maximum for single, 32 pages maximum for duplex)

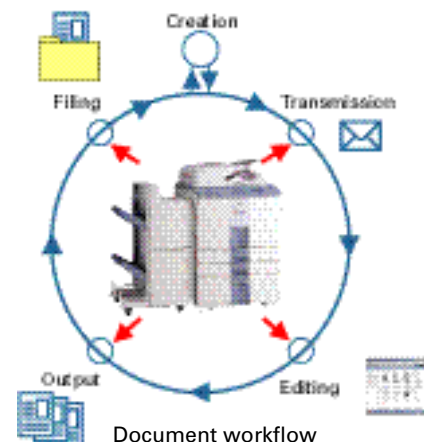
# Document Management Solution

The right choice for businesses seeking:

- High speed electronic document management
- Versatile scanning functions
- High volume copying and printing
- Improved network productivity
- Efficient job/network management

## Document management

The **GL-1020 Document Controller** transforms the e-STUDIO550/650/810 into a networked document management system with high speed input/output capabilities and supreme versatility. It gives you the power to control the entire document workflow of your office, with capabilities that range from high volume document input, transmission and editing to storing and output. Such comprehensive management is made possible by the GL-1020's versatile scanning functions, **Internet connectivity** (Scan to Email, Internet Fax), **document editing** (TopAccess™ Composer) and **document filing** functions (Scan to File), along with the **high performance print engine** of the e-STUDIO550/650/810. Together, these features and capabilities perform beyond expectations, improving total productivity and efficiency in the document management of your office, and seamlessly bridging the gap between electronic and paper documents with amazingly high speed on your network.



## Convenient scanning features

Those accustomed to conventional scanners will appreciate the e-STUDIO550/650/810's convenient scanning functions, which are extremely easy to use: in particular for high volume scanning. Upon setting your documents on the RADF, it continuously and automatically feeds them for scanning in the same way as regular copies. File resolution for Scan to File, Scan to Email and TWAIN scanning is selectable from 150dpi to 600dpi depending on your needs.

### Scan to File

Scanned data is instantly converted into your choice of PDF, Multi-page TIFF, or single-page TIFF file and stored in the GL-1020 controller or a predetermined folder on a file server or PC.



### Scan to Internet Fax

Scan to Internet Fax transmits scanned data to single or multiple Internet Fax addresses. Not only is Internet faxing highly economical in comparison with regular faxing, but it allows you to send higher quality faxes. Comments, which are attached as cover sheets, can be added to your faxes when desired.



### Scan to Email

The Scan to Email function drastically reduces communication costs. This feature transfers scanned data to a mail server as a TIFF PDF email attachment for direct emailing to one or more chosen destinations.



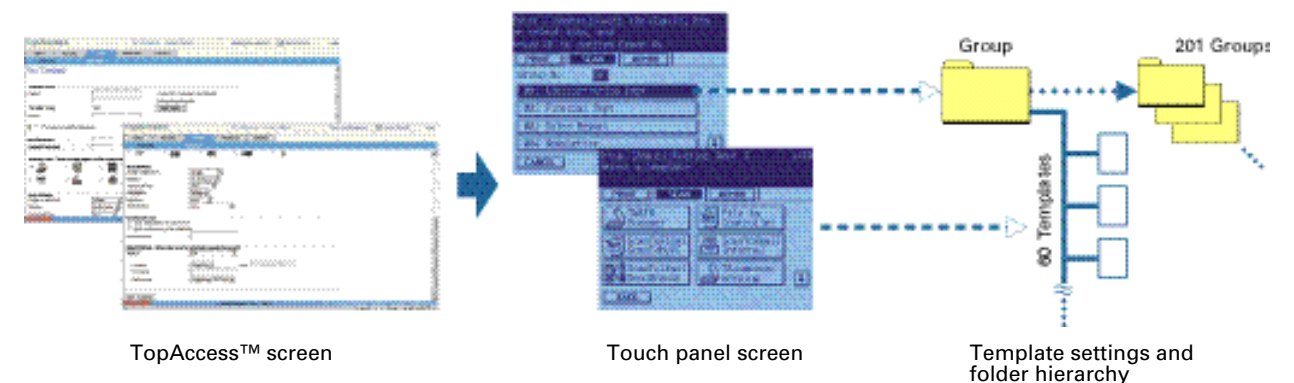
### TWAIN scanning

The e-STUDIO550/650/810 scans documents with impeccable accuracy. Once your single or multiple scanning job is complete, the data is stored in memory, allowing it to be downloaded from any client PC equipped with TWAIN compatible software like Adobe® Photoshop® or Acrobat®.

## Easy scanning operation (Scan Templates)

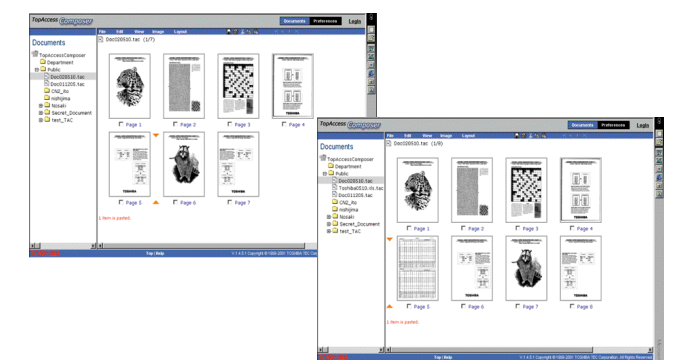
The e-STUDIO550/650/810's convenient **template folder function** makes scanning jobs more effective and simple. With web based **TopAccess™** on your PC, you can easily create a template with set scanning method and scanned data destination. For example, you can preset a folder for "Scan to File" or email addresses for "Scan to Email" in the template. Multiple email addresses can be set in one template for frequent simultaneous transmission, and you can set file formats and resolutions as well. Once a template has been prepared, its icon appears on the LCD touch panel of the e-STUDIO550/650/810. Just select the icon and press the

Start Key to scan in accordance with your pre-determined destinations and settings. With the GL-1020, completing a scanning job is as simple as pressing a few keys. Up to 201 groups of 60 templates each, or a total of 12,060 templates, can be put at your command for easy management of scanned data in a manner similar to that for file folders on your PC. When template information is highly confidential, you can limit access to those with the correct password. Quite simply, the template folder function enables you to scan more efficiently, with less effort.



## TopAccess™ Composer

TopAccess™ Composer is a web based document editor/organiser for the Toshiba e-STUDIO550/650/810 that enables you to view, edit and merge documents on the GL-1020 Controller. Without requiring any additional applications, it allows you to move, copy, delete and print documents using thumbnail views on your Web browser. For example, if you have several documents originating from different sources, such as Microsoft® Excel/Word and hard copies scanned as PDF and TIFF files, you can send them to TopAccess™ Composer, merge them, and print as one document.





## Professional Print Solution

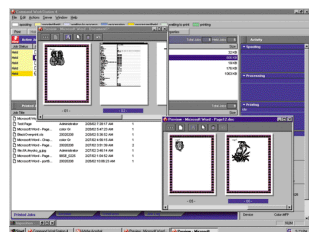
The right choice for print-for-pay businesses seeking:

- Exceptional cost performance for professional reproduction
- High volume copying and printing
- Professional finishing options and applications
- The ability to handle a variety of paper types

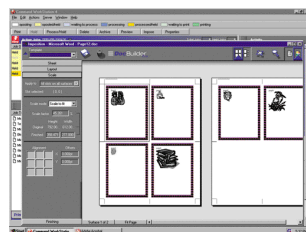
### Expert applications

#### DocBuilder™ and optional DocBuilder Pro™

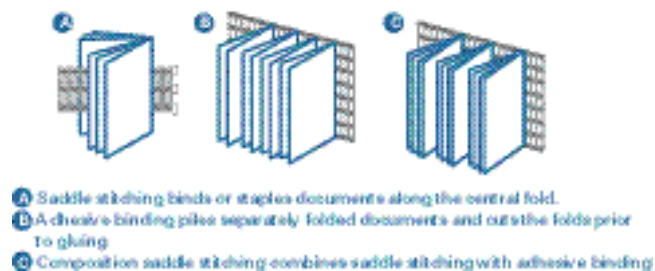
**DocBuilder™** is a standard feature that simplifies professional document editing and job control with drag and drop ease. Not only does it provide convenient thumbnail views of your documents, but it also allows you to paste scanned images or pages made from any application into any document you're planning to print. The professional version, called **DocBuilder Pro™**, is a highly useful option with advanced design capabilities allowing the easy creation of documents with more complex imposition layouts.



DocBuilder™



DocBuilder™ Pro

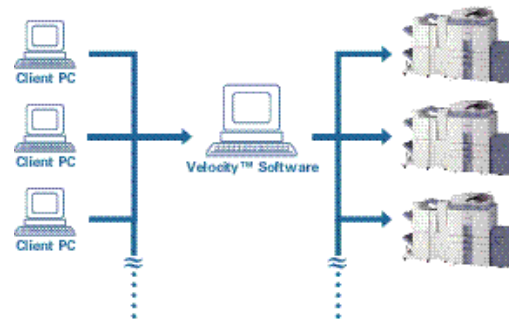


#### Fiery FreeForm™

This intelligent utility significantly boosts speed when printing large numbers of direct mail or other documents sharing the same basic content, yet containing small personalised elements specific to each recipient. It speeds the process by RIPping and storing the common elements, or master page, just once and then processing the other elements separately.

### Support for optional Velocity™ cluster printing

The e-STUDIO550/650/810 supports EFI® Velocity™ Suite, which enables efficient cluster printing by closely monitoring the entire system, as well as data content, to determine how best to divide up jobs among available printers. It can even engage all available printers simultaneously to complete one job.



### Direct PDF printing

This feature improves the workflow by allowing operators to print Portable Document Format (PDF) files without invoking applications like Adobe® Acrobat® Reader™. They can print by simply dragging the file, or even keep files in hot folders defined with specific printing parameters.

### Adobe® PostScript® 3™

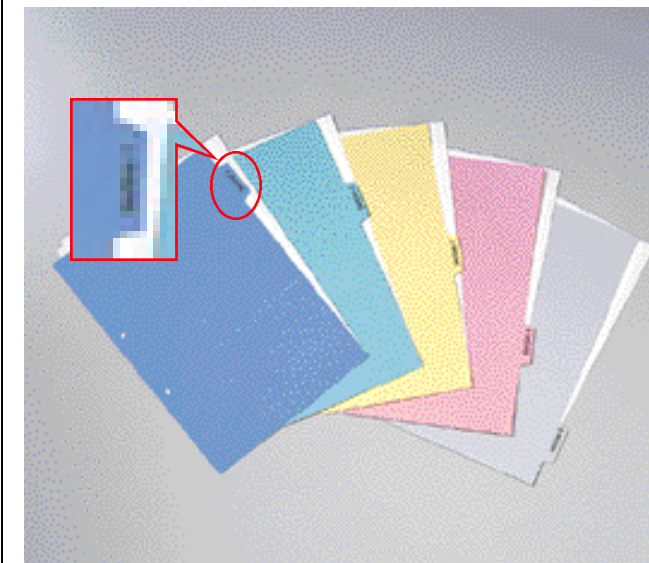
This page description language is the worldwide printing standard for professionals of all kinds and helps ensure the highest levels of quality, precision and consistency. It supports an extensive range of file formats.

### Convenient scanning features

Scanned data can be printed or saved on the controller's hard disk using **Scan to Stored Job**. **Scan to Mailbox** allows scanned data stored as files in the controller's hard disk to be accessed with ease from any PC in the network. **Scan to DocBuilder Pro™** sends the data directly to DocBuilder Pro™ for versatile document merging, editing and printing.

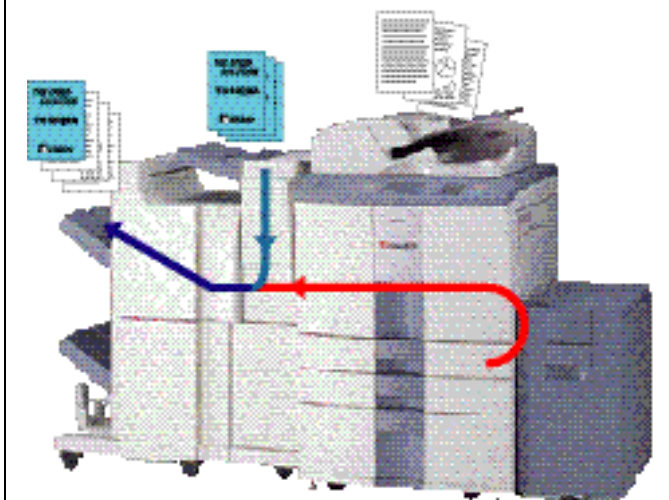
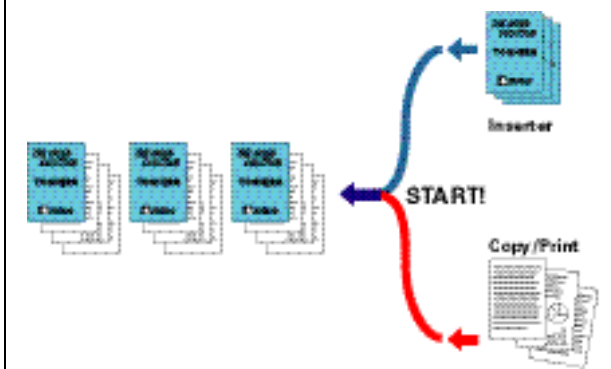
### Flexibility in paper sizes and stock

You'll find very few limitations with the Toshiba e-STUDIO550/650/810. All five of its paper sources handle paper from **A5R to A3 size** and up to **209 gr/m² paper weight**. **Tabs** can be inserted into documents with ease, copying and printing is possible on the protruding tabs, and OHP sheets are produced with outstanding results.



### Inserters

An Inserter gives finished documents a professional look by inserting pre-printed colour paper and heavyweight stock of up to **256 gr/m² paper weight** wherever desired. Front and back covers, for example, may be added with ease. Moreover, insertion of this varied stock is completed directly from the tray without subjecting inserts to the heat of the fuser.



Leading features on all 3 solutions.

Isn't it time you had a Toshiba?

Extraordinary image quality

## Enhanced clarity

Superb clarity is the first thing you'll notice from e-STUDIO550/650/810 copies and prints. Toshiba's breakthrough **serial filter processes** every pixel of the image to ensure accurate contrast, smooth gradations and all-round industry leading quality. Edges are supremely smooth on copied text and graphics, as well as on prints, thanks to sophisticated new Toshiba **edge processing technology** that all but eliminates the image blur seen on many rival devices.



## High resolution

e-STUDIO550/650/810 digitally captures the nuances of every image and precisely reproduces them at **2,400 × 600 dpi resolution, with smoothing**. Halftones are reproduced in **256 level grey scale**, and extra fine toner contributes to overall image quality beyond compare.

## Image optimisation

You can always depend on excellent image quality when using e-STUDIO550/650/810's default Text/Photo image setting. Should your document consist solely of text or a photo, further optimisation is made possible by selecting either the dedicated Text or Photo mode.

User friendly operation

## Functional touch panel screen

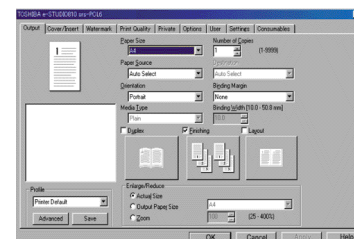
e-STUDIO550/650/810 operation is easy, due in large part to the intuitive touch panel screen. Menus are simplified for easy fingertip navigation, and icons make most choices obvious at a glance. There's even a convenient icon that lets you confirm the exact settings you have input before copying, to minimise errors. Even when paper or toner needs replacement, step-by-step graphical guidance shows you how to proceed.



## True user friendliness

Toshiba's user friendly design takes the needs of visually challenged individuals into account. Users have the choice of reversing the touch screen menu's background and character colours at any time. With the press of a button, black becomes white and vice versa. Large buttons for number selection and other frequently used operations complement the touch panel screen. Through ergonomic studies, these buttons have been optimised in shape, layout and colour for quick, easy operation and accurate tactile feedback.

Furthermore, the Printer Driver Window is especially easy to understand. Basic output settings (paper size, number of prints, orientation, media type) and frequently used functions (finishing, duplexing, and layout) have been integrated into the Printer Driver's default screen for easier access. Toshiba put more thought into its design, so you can use it with less effort.



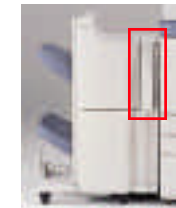
GA-1140 screen

## Paper handling options

**Finishers** (MJ-1017, MJ-1018, MJ-1021)

MJ-1018

Hole punch unit (MJ-6003)

**Insertor** (MJ-7001)

4,000 sheet LCF (MP-4003)



## Management tools on a network (with Controllers)

### Easy cost management

A **Department Code** function allows managers to instantly and accurately gauge the number of copies per department, or limit the number available to each department. More detailed information, including a log of copy/print jobs, is available by printed **Department Management List**. When restrictions are in order, the e-STUDIO550/650/810's **Member Printing** function can be used to limit access by requiring an appropriate password at the time of job input.

## Network job management

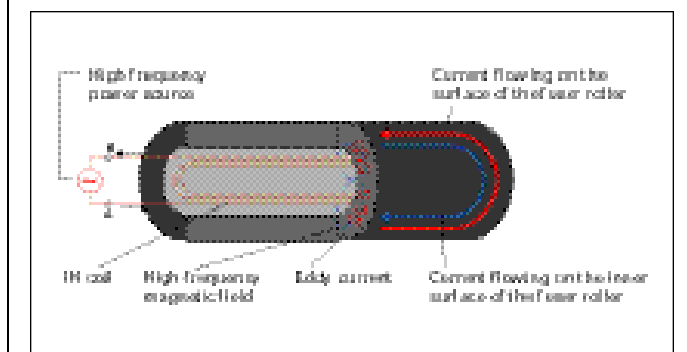
**SNMP** (Simple Network Management Protocol) simplifies installation by eliminating the need to set up clusters and share points. It not only decreases network traffic, but is accessible through third party network management tools such as HP OpenView. All network users can monitor printing and device status with **GL-DocMon\***, which can be set to automatically pop up a message display on PC screens indicating valuable feedback such as job completion and the need to attend to a device. **TopAccess™** gives network administrators in-depth device and network management tools. They can remotely view, filter and export message and job logs; shut down or reboot the controller; update software; edit copy and print settings; remotely configure network settings and much more.

\* Only available on the GL-1020.

## Environmental responsibility

## Energy savings

The e-STUDIO550/650/810 operates smoothly and efficiently, consuming a bare minimum of electricity. Its **Twin IH fuser technology** uses twin coils to minimise heat loss and reduce warm-up energy usage. The Twin IH fuser technology developed by Toshiba is the first to be utilised in the copier and printer industries. Scanning exposure is **Xeon lamp** generated, for greater brightness using far less power. A **Weekly Timer** that helps prevent accidental power consumption after work hours, works together with functions like **Energy Saver, Sleep mode, Auto Energy Save** and **Auto-shut-off** to further conserve electricity and contribute to reduced operating costs.



IH fuser components

### Toner recycling system

During printing and copying, a small percentage of toner particles is typically wasted. But the e-STUDIO550/650/810 automatically recycles about 90% of this excess toner, ensuring less frequent toner replenishment, overall cost savings and conservation of resources.

## High environmental standards

The e-STUDIO550/650/810 meets stringent international environmental standards and reflects Toshiba's strict policy of minimising the impact of its products and manufacturing processes on the natural environment. The e-STUDIO550/650/810's circuit boards, for example, contain a bare minimum of lead soldering and halogen base materials. Chassis parts and screws are also virtually free of chromium. All three models meet the well-known "ENERGY STAR" efficiency requirements of the U.S. Environmental Protection Agency (EPA). The e-STUDIO550/650/810 also offers paper saving features like duplexing and N in 1, and many components that, like the toner cartridge, are recyclable or consist of recycled material.