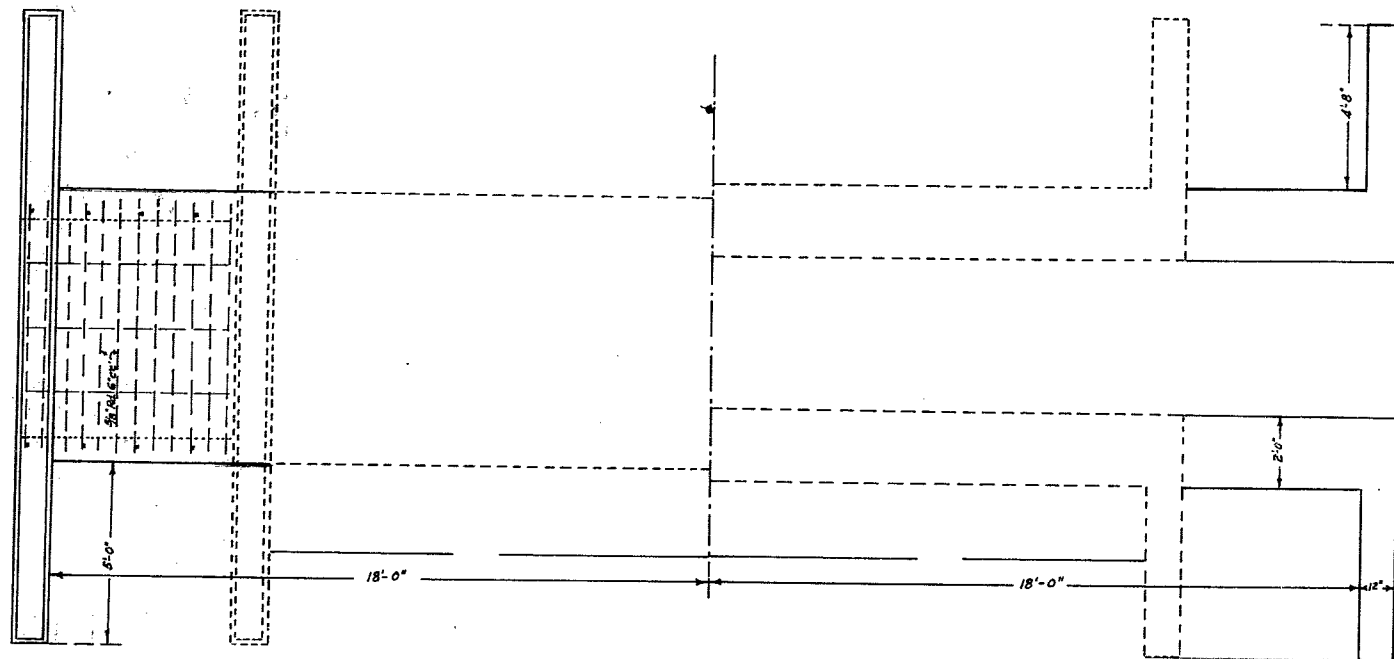


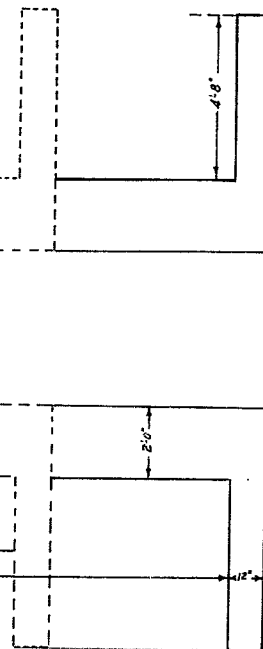
*This sheet superseded by sheet 5A*

EXTENSION REINFORCED CONCRETE CULVERT  
Sta 133+97.58 Sca/E = 94' ± 1'

FLOOR PLAN

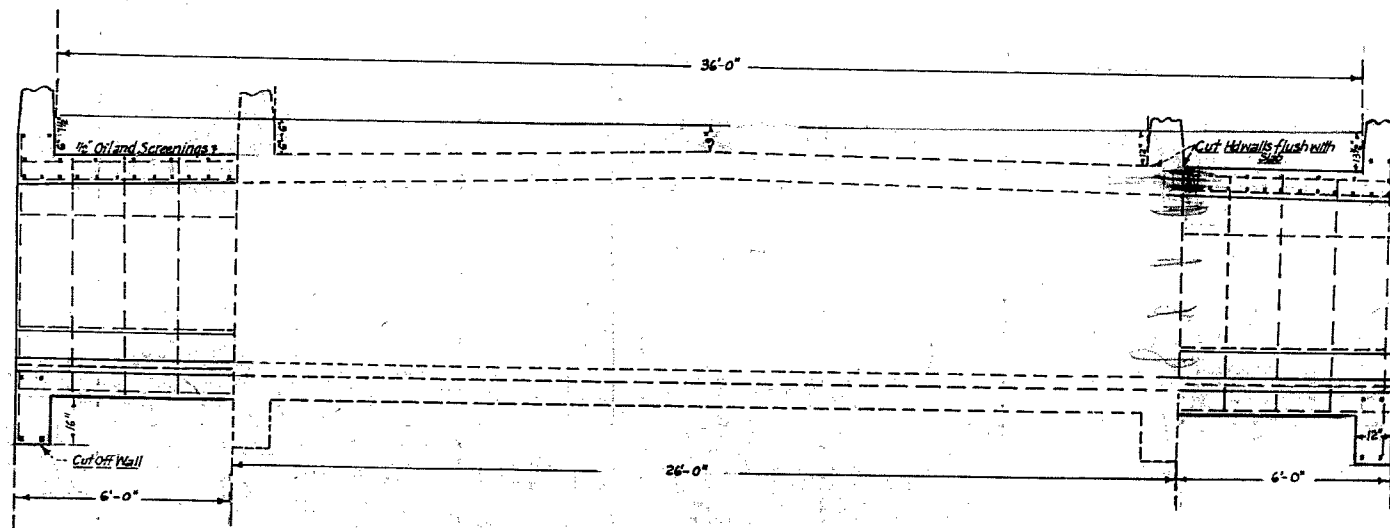


FOUNDATION PLAN

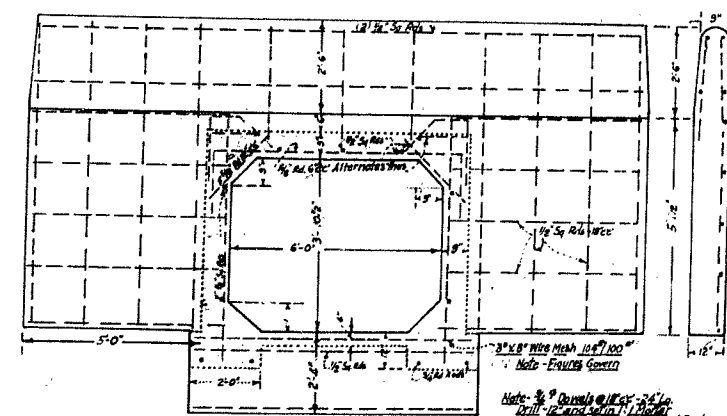


EXTENSION REINFORCED CONCRETE CULVERTS

Stations 28+12.32  
10+17.32  
129+21.32



SIDE ELEVATION

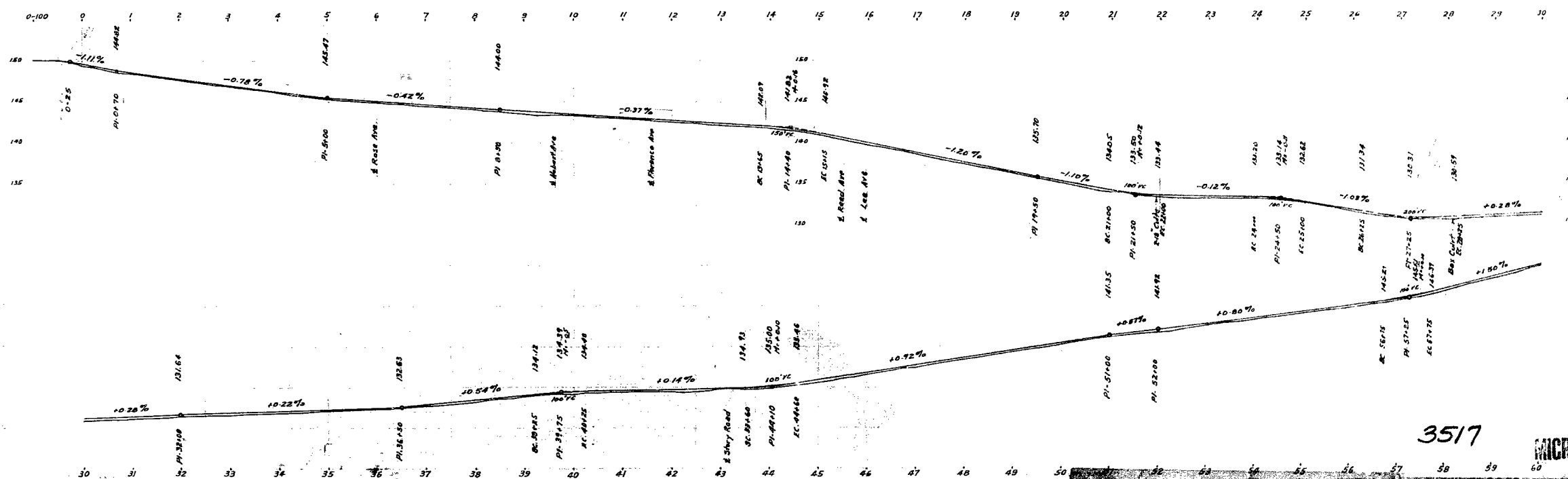
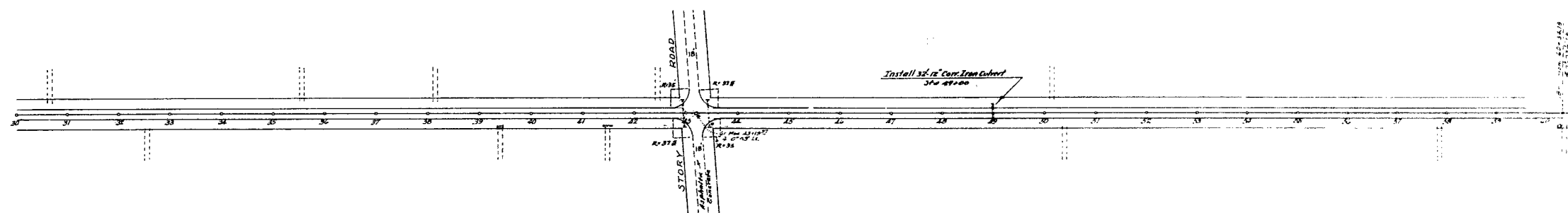
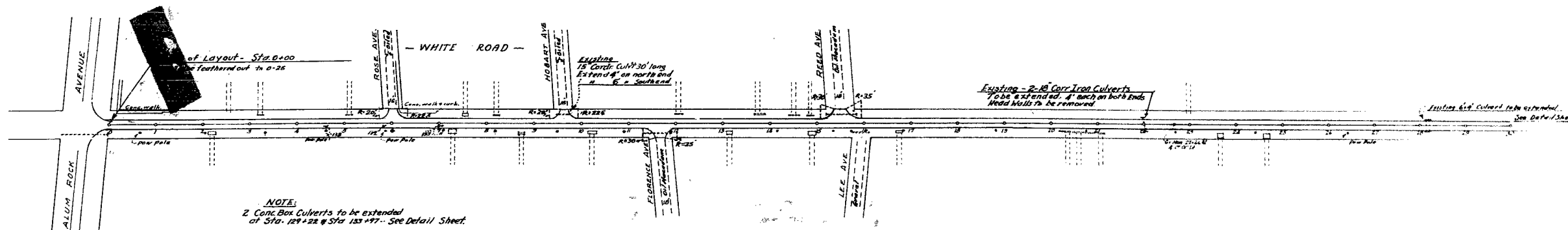


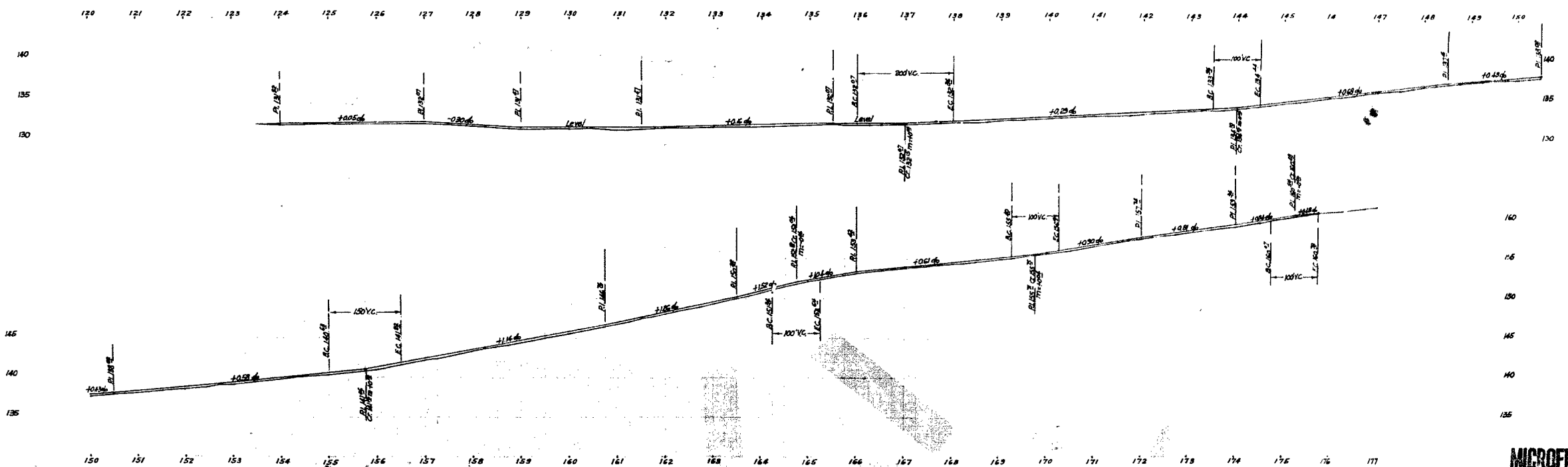
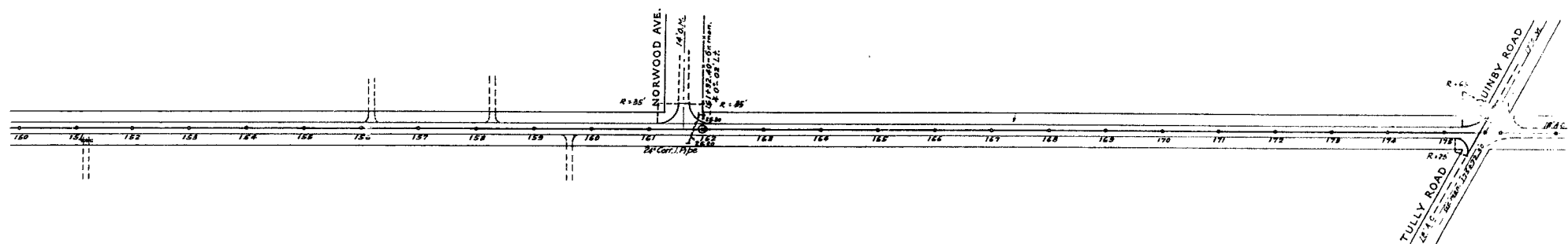
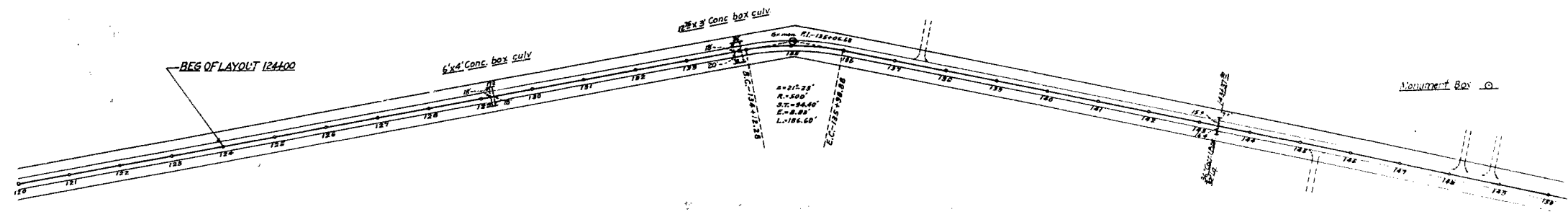
END VIEW

Note: 3" Diameter @ 12" o.c. - 24" Lp.  
Drill 1/2" and 3/4" Diameter  
Clear Top and Sides of Barrel Section

MICROFILM







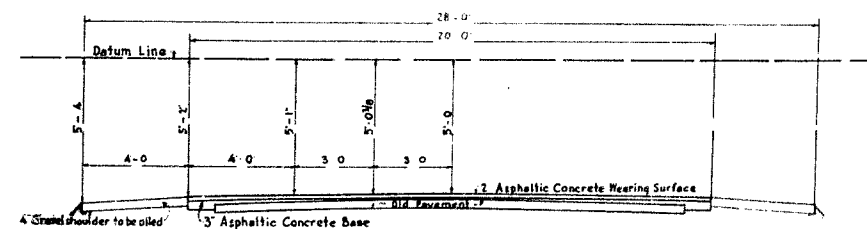
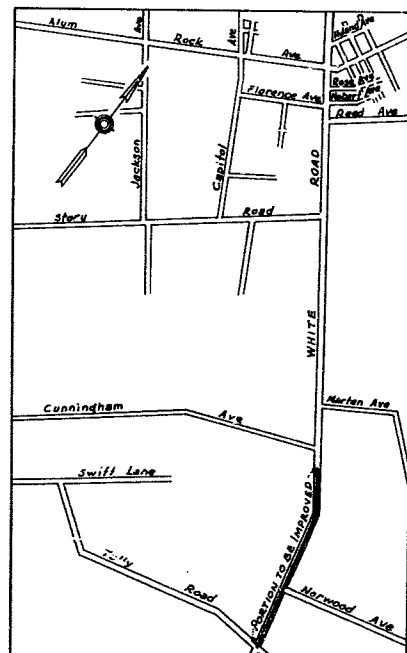
WHITE ROAD  
FROM STA. 124400 TO TULLY ROAD  
Sheet No. 2 of 5 sheets.

MICROFILM

PLAN  
FOR THE IMPROVEMENT OF  
**WHITE ROAD**  
From Point Near Cunningham Ave to Tully Road  
IN  
SUPERVISOR DISTRICTS NO. 2  
AUGUST, 1940

ROBERT B. CHANDLER  
County Surveyor

SCALES  
PLAN: 1" = 100'  
PROFILE  
Horiz: 1" = 100' Vert: 1" = 6'  
Cross Sections: 1" = 5'



TYPICAL CROSS SECTION  
SCALE: 1/8" = 1'-0"