

# CORNER RECORD

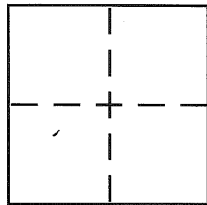
Document Number

County of

California

City of

Brief Legal Description



## CORNER TYPE

Government Corner ☐ Control ☐  
Meander ☐ Property ☐  
Rancho ☐ Other ☒  
Date of Survey 11-27-06

## COORDINATES (Optional)

N. \_\_\_\_\_  
E. \_\_\_\_\_  
Zone \_\_\_\_\_ NAD27 ☐ NAD83 ☐  
NAD83 Epoch \_\_\_\_\_  
Elev. \_\_\_\_\_  
Vert. Datum: NGVD29 ☐ NAVD88 ☐  
Meas. Units: Metric ☐ Imperial ☐

Corner -

Left as found ☐Found and tagged ☐Established ☐Reestablished ☐Rebuilt ☐

Identification and type of corner found: Evidence used to identify or procedure used to establish or reestablish the corner:

SEE PAGE 2

A description of the physical condition of the monument as found and as set or reset:

SEE PAGE 2

## SURVEYOR'S STATEMENT

This Corner Record was prepared by me or under my direction in conformance with  
the Land Surveyor's Act on November 27, 2006

Signed

P.L.S or R.C.E. No.

L.S. 5003

## COUNTY SURVEYOR'S STATEMENT

This Corner Record was received

1-17-07

and examined and filed

1-31-07

Signed

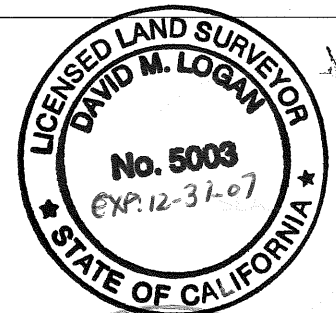
P.L.S or R.C.E. No.

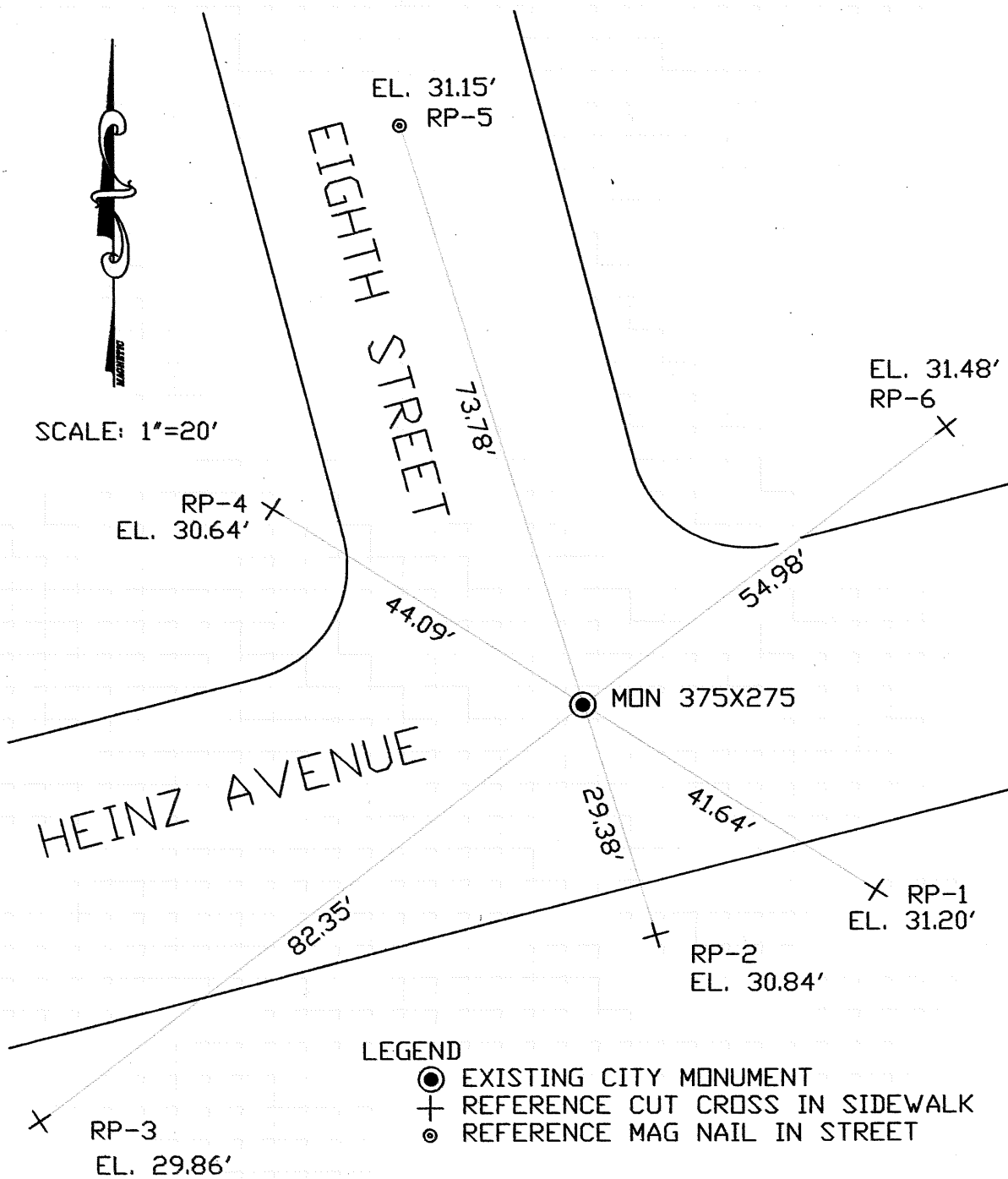
5726

Title

COUNTY SURVEYOR

County Surveyor's Comment





THE EXISTING MONUMENT AS SHOWN IS REFERENCED BY THE INTERSECTION OF STRAIGHT LINES BETWEEN RP-1 TO RP-4, RP-2 TO RP-5 AND RP-3 TO RP-6.