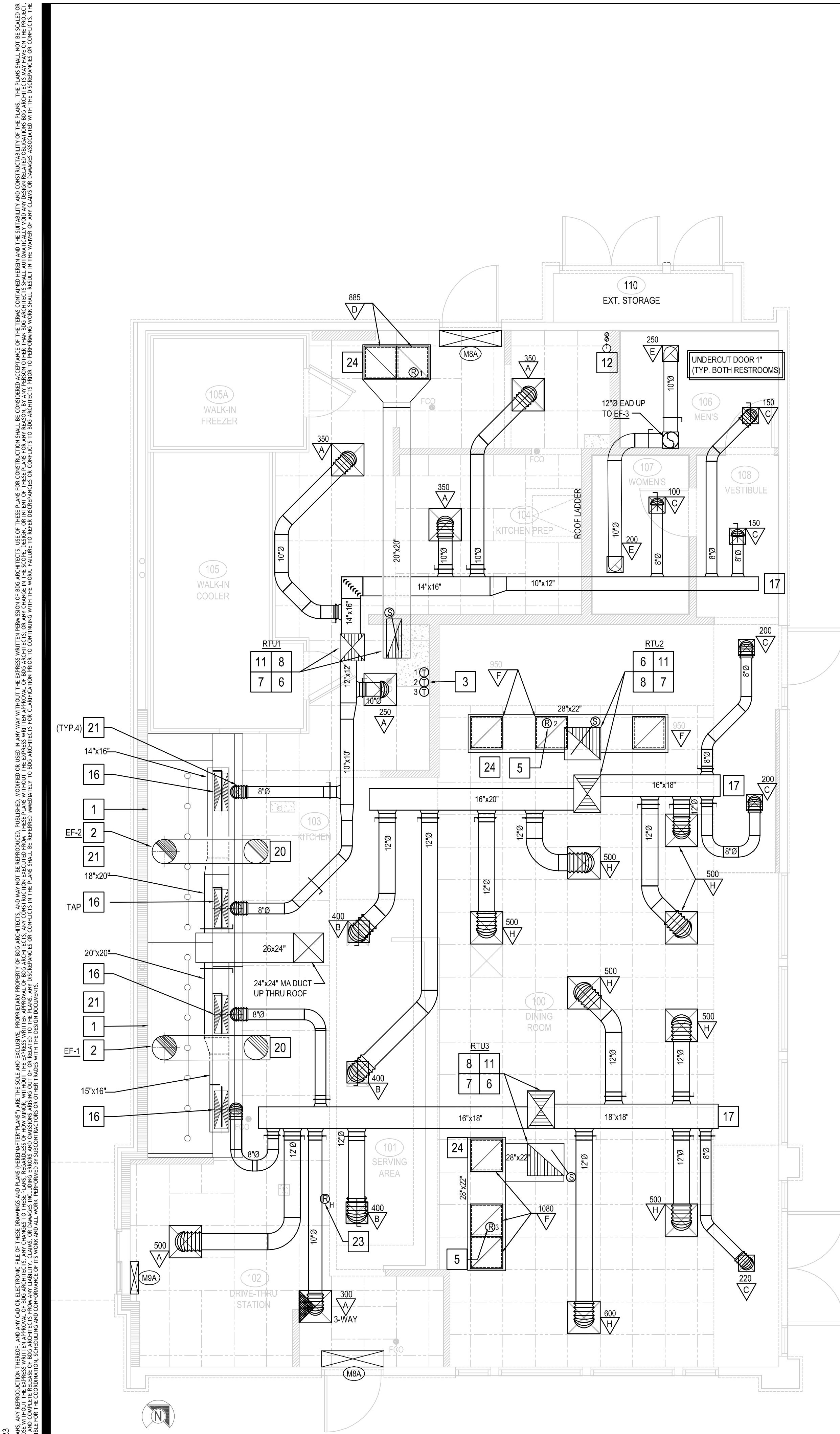


ALL ITEMS RELATED TO HVAC SYSTEM SHALL BE PROVIDED AND INSTALLED BY CONTRACTOR. CONTACT LENNOX REPRESENTATIVE ABOVE.	
- THERMOSTATS: REMOTE SENSOR TYPE, 24/7 PROGRAMMABLE AND CAPABLE OF OPERATING ROOM/UNIT AND ACCESSORIES	
- DUCT MOUNTED SMOKE DETECTORS: IONIZATION TYPE/UL LISTED	
NOTE:	
1. UNIT WEIGHTS ABOVE INCLUDE ACCESSORIES AND CURB.	10. STANDARD 14" ROOF CURB (CURBS PLUS FIELD INSTALL)
2. FACTORY COATED EVAPORATOR COIL ON ALL UNITS	11. COIL GUARDS (FIELD INSTALL)
3. NOT USED.	12. FACTORY DISCONNECT
4. SINGLE ENTHALPY ECONOMIZER, HIGH PERFORMANCE, LOW-LEAK DAMPERS, W/ GRAVITY EXHAUST	13. FACTORY GFCI (FIELD WIRED)
5. TITLE 24 COMPLIANT	14. LENNOX COMMERCIAL CS7500 THERMOSTAT WITH REMOTE SENSOR (FIELD WIRED)
6. RETURN AIR SMOKE DETECTOR (FIELD INSTALLED)	
7. FACTORY HINGED ACCESS DOORS	
8. MERV 8 PLEATED FILTERS	
9. MULTI SPEED (MSAV) BLOWER MOTORS	

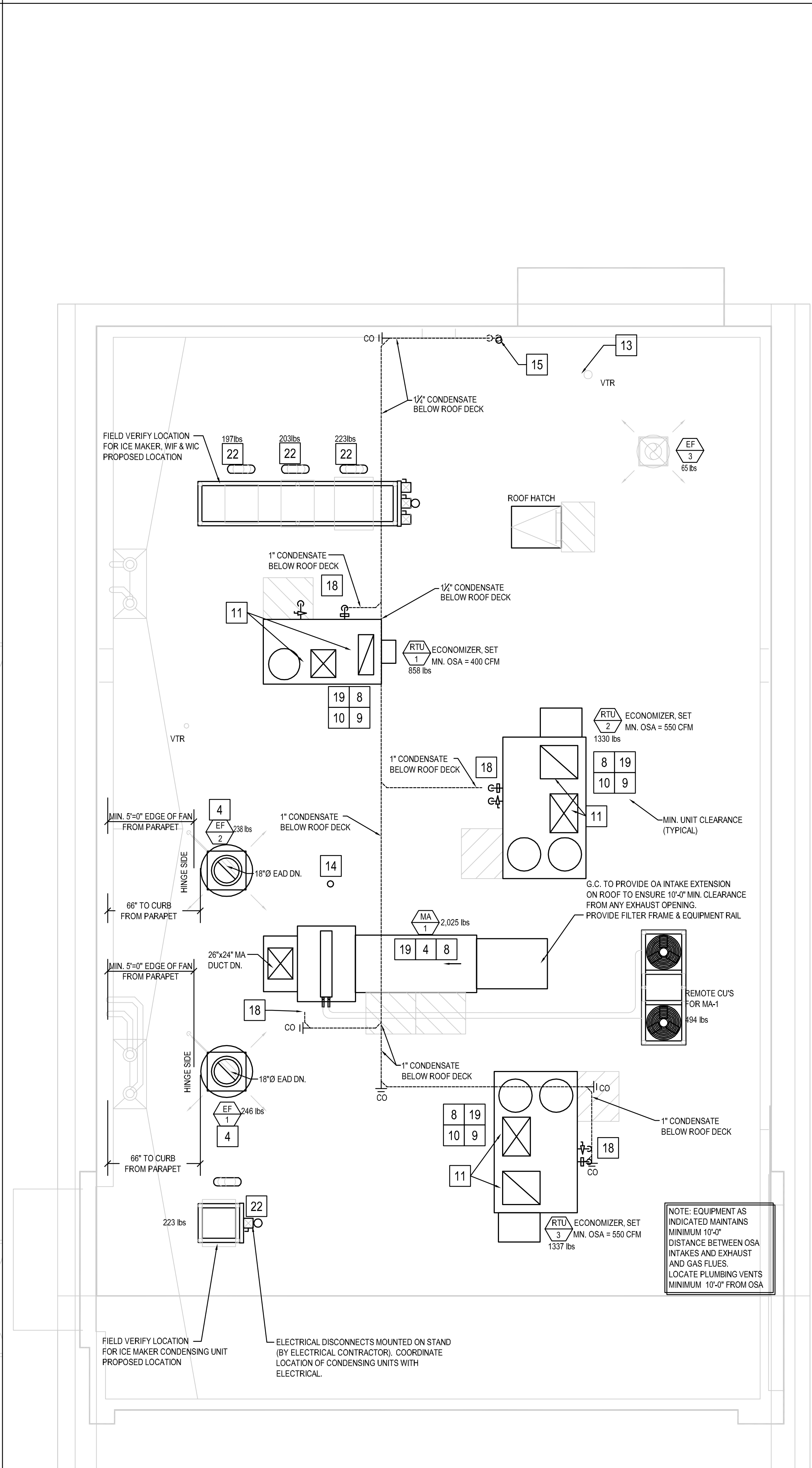
DIFFUSER & GRILLE SCHEDULE									
DESIGNATION	MANUFACTURER	MODEL NO	TYPE	COLOR	NOM NECK SIZE	NOM FACE SIZE	FRAME TYPE	NC MAX	REMARKS
A	TITUS	PCS-3	PERFORATED ADJUSTABLE CORE	WHITE	PER PLAN	24" x 24"	LAY-IN T-BAR	< 30	INSULATION BLANKET FOR BACKPAN, CONTRACTOR FURNISHED ROUND NECK ADAPTER
B	TITUS	PCS-3	PERFORATED ADJUSTABLE CORE	WHITE	PER PLAN	20" x 20"	SURFACE	< 30	WITH 20X20 SURFACE FRAME, REQUIRES A 20.5"X20.5" CEILING OPENING, INSULATION BLANKET, D-100 RADIAL DAMPER
C	TITUS	PCS-3	PERFORATED ADJUSTABLE CORE	WHITE	PER PLAN	12" x 12"	SURFACE	< 30	WITH12X12 SURFACE FRAME, REQUIRES A 12.5"X12.5" CEILING OPENING, INSULATION BLANKET, D100 RADIAL DAMPER
D	TITUS	PAR-3	PERFORATED RETURN	WHITE	22" x 22"	24" x 24"	LAY-IN T-BAR	< 35	CONTRACTOR FURNISHED INSULATE RETURN BOX FOR CONNECTING FLEX DUCT
E	TITUS	PAR-3	PERFORATED EXHAUST	WHITE	PER PLAN	12" x 12"	SURFACE	< 35	WITH12X12 SURFACE FRAME, REQUIRES A 12.5"X12.5" CEILING OPENING, D100 RADIAL DAMPER
F	TITUS	PAR-3	PERFORATED RETURN	WHITE	22" x 22"	24" x 24"	LAY-IN T-BAR	< 35	CONTRACTOR FURNISHED INSULATE RETURN BOX FOR CONNECTING FLEX DUCT
H	TITUS	PCS-3	PERFORATED ADJUSTABLE CORE	WHITE	PER PLAN	24" x 24"	LAY-IN T-BAR	< 30	WITH INSULATION BLANKET, BALANCE USING MANUAL VOLUME DAMPER AT BRANCH DUCT
J	TITUS	PCS-3	PERFORATED ADJUSTABLE CORE	WHITE	PER PLAN	24" x 24"	LAY-IN T-BAR	< 30	AG95 OBD, INSULATION BLANKET FOR BACKPAN, CONTRACTOR FURNISHED ROUND NECK ADAPTER
K	TITUS	PCS-3	PERFORATED ADJUSTABLE CORE	WHITE	PER PLAN	12" x 12"	SURFACE	< 30	WITH12X12 SURFACE FRAME, REQUIRES A 12.5"X12.5" CEILING OPENING, INSULATION BLANKET, D100 RADIAL DAMPER
L	TITUS	PCS-3	PERFORATED ADJUSTABLE CORE	WHITE	PER PLAN	12" x 12"	SURFACE	< 30	WITH12X12 SURFACE FRAME, REQUIRES A 12.5"X12.5" CEILING OPENING

NOTE: PROVIDE FACTORY INSTALLED BACK PAN INSULATION ON AIR DEVICES.
 HVAC CONTRACTOR IS TO PURCHASE ALL AIR DEVICES FROM PANDA APPLIED MANAGEMENT ACCOUNT VENDOR THERMAIR SYSTEMS INC.
 PLEASE CONTACT RON CAMPTON AT 802-705-5010 OR EMAIL ronc@thermaisystems.com

PANDA HOME 2600 R3



HVAC FLOOR PLAN 2
Scale: 1/4"=1'-0" M-100



HVAC ROOF PLAN 1
Scale: 1/4"=1'-0" M-100

MECHANICAL KEY NOTES:

1. INSTALL GREASE EXHAUST HOODS FURNISHED BY PANDA. HOOD SHALL BE ONE CAPTIVEAIRE 4824ND HOOD EXHAUSTING 3,450 CFM. SUPPORT FROM STRUCTURE ABOVE WITH UNISTRUT AND ALL. THREAD ROD. MOUNT HOOD PER LOCAL CODE REQUIREMENTS. REFER TO PLAN FOR HOOD CONNECTIONS. SEE CODE COMPLIANCE DRAWINGS ON SHEET M-500 AND CAPTIVEAIRE HOOD DRAWINGS FOR ADDITIONAL REQUIREMENTS. (TWO SECTIONS TOTAL).
2. INSTALL MANUFACTURED CAPTIVEAIRE 18" GREASE EXHAUST DUCT. ROUTE ON TOP OF MAKE UP AIR DUCT. FROM INLET OF ROOF MOUNTED GREASE EXHAUST FAN. CONNECT TO EXHAUST HOOD COLLAR. FIELD VERIFY. SEAL DUCT TO THE ROOF CURB WITH FIRE CAULKING. SEE HOOD DETAIL. DRAWINGS ON SHEET M-500 AND CAPTIVEAIRE DRAWINGS ON SHEETS M-400 TO M-411.
3. MOUNT THERMOSTAT AT MANAGER STATION. REFER TO DETAIL ON SHEET E-200. SEE DWG FOR EXACT LOCATION OF REMOTE SENSOR. SEE ROOFTOP UNIT SCHEDULE AND TEMPERATURE CONTROL DIAGRAM ON SHEET M-500 FOR ADDITIONAL INFORMATION.
4. INSTALL GREASE EXHAUST FAN WITH CURB (EF-1 AND EF-2) AND MAKE UP AIR (MA-1) FURNISHED BY PANDA. COORDINATE LOCATION OF UNIT WITH ARCHITECTURAL AND STRUCTURAL DRAWINGS.
5. PROVIDE AND INSTALL A REMOTE SENSOR FOR ROOFTOP UNIT AT THIS LOCATION. MOUNT REMOTE SENSOR IN RETURN AIR DUCTWORK. SEE TEMPERATURE CONTROL DIAGRAM ON SHEET M-500 FOR ADDITIONAL INFORMATION.
6. PROVIDE AND INSTALL DUCT MOUNTED SMOKE DETECTOR AT MAIN SUPPLY AIR DUCT PER UMC, SEC. 609, OR AT RETURN AIR DUCT PER IMC, SECTION 606.2.1. DETECTORS SHALL BE INTERLOCKED TO SHUT DOWN ROOFTOP UNITS UPON DETECTION OF SMOKE. PROVIDE ALL CONTROL WIRING NECESSARY TO PERFORM THIS OPERATION.
7. PROVIDE FLEXIBLE CONNECTION BETWEEN UNIT, ROUTE DUCT THRU ROOF CURB AND TRUSS.
8. FOR GAS OR WATER CONNECTION, SEE PLUMBING DRAWINGS.
9. PROVIDE FABRICATED CURB PER MANUFACTURERS REQUIREMENTS AND COORDINATE EXACT LOCATION OF UNIT IN FIELD. SHIM ROOF CURB LEVEL FOR PROPER CONDENSATE DRAINAGE.
10. FURNISH AND INSTALL ALL TEMPERATURE CONTROL WIRING FROM THE UNIT TO THE THERMOSTAT OR OTHER CONTROL DEVICES.
11. FULL SIZE SA AND RA UP TO RTU. TRANSITION AS REQUIRED TO RTU INLET/OUTLET SIZE.
12. PVC COMBINATION VENT AND COMBUSTION AIR PIPING PROVIDED AND INSTALLED BY PLUMBING FOR SEALED COMBUSTION WATER HEATER. REFER TO PLUMBING PLANS.
13. WATER HEATER CONCENTRIC VENT TERMINATION. REFER TO PLUMBING PLANS. OFFSET AS REQUIRED FOR CLEARANCE FROM AIR INTAKES.
14. ROOF HYDRANT. REFER TO PLUMBING DRAWINGS.
15. ROUTE CONDENSATE DRAIN IN CEILING SPACE OVER AND DOWN IN WALL. SLOPE 1/4" PER FOOT. STUB-OUT AND ELBOW DOWN OVER MOP SINK. TERMINATE WITH MINIMUM 2" AIR GAP.
16. MA DUCT (BELOW MAKE UP AIR) CONNECT TO 28"x10" RISER FROM SUPPLY PLENUM.
17. PROVIDE DUCT EXTERNAL INSULATION WRAP AT TRUNK, TYPICAL.
18. CONDENSATE DRAIN LINE DOWN THRU ROOF. REFER TO DETAIL 16P-500.
19. PROVIDE AND INSTALL ALL EQUIPMENT WITH MANUFACTURER'S RECOMMENDED CLEARANCES FOR MAINTENANCE. MAINTAIN MINIMUM CLEARANCES TO ELECTRICAL AND SERVICE ACCESS PANELS AND DISCONNECTS.
20. GREASE DUCT CLEANOUT LOCATION. PROVIDE ACCESS TO CLEANOUT ABOVE CEILING. REFER TO MECHANICAL SPECIFICATIONS SHEET M-000.
21. 8" CONNECTION TO HOOD RTU SUPPLY PLENUM COLLAR. BALANCE TO 236 CFM.
22. PROVIDE AND INSTALL ACR TUBING, SIZED AND ROUTED PER MANUFACTURER'S INSTRUCTIONS. FROM REMOTE REFRIGERANT CONDENSERS TO WALK-IN COOLER AND FREEZER FAN COILS. AND ICE MAKER. TEST, PURGE, EVACUATE AND CHARGE LINES AS REQUIRED BY MANUFACTURER. (STARTUP FOR ICE MAKER IS BY OWNER'S REPRESENTATIVE). ROUTE REFRIGERANT LINES THROUGH "ATR HUB" PROVIDED AND INSTALLED BY GC (REFER TO ARCH. ISO 3 AND 4, SHEET A-108). UNITS SECURED TO RACK BY G.C.
23. ROOM AIR. SENSOR FROM CAPTIVEAIRE HOOD ON BACK OF MENU BOARD WALL, AS CLOSE TO CEILING AS POSSIBLE.
24. TRANSITION FULL SIZE RETURN PLENUM DOWN TO GRILLES AS REQUIRED. INSIDE RETURN AIR PLENUM WITH 1" LINER PAINTED FLAT BLACK RE: 1M-501

NOTE: MAXIMUM FLEXIBLE DUCT LENGTH ALLOWED SHALL BE PER LOCAL CODE AND AMENDMENTS. IMC HAS NO LIMITATIONS FOR FLEXIBLE DUCT LENGTHS.

NOTE: EQUIPMENT AS INDICATED MAINTAINS MINIMUM 10'-0" DISTANCE BETWEEN OSA INTAKES AND EXHAUST AND GAS FLUES. LOCATE PLUMBING VENTS MINIMUM 10'-0" FROM OSA



PANDA EXPRESS, INC.
1683 Walnut Grove Ave.
Rosemead, California
91770
Telephone: 626.799.9898
Facsimile: 626.372.8288

All ideas, designs, arrangement and plans indicated or represented by this drawing are the property of Panda Express Inc. and were created for use on this specific project. None of these ideas, designs, arrangements or plans may be used by or disclosed to any person, firm, or corporation without the written permission of Panda Express Inc.

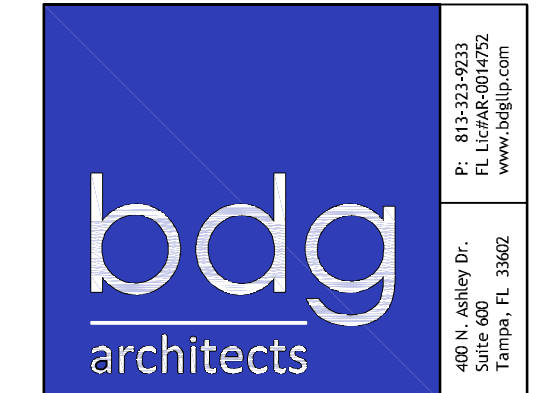
REVISIONS:

ISSUE DATE:

CHECK SET	04-20-23
BID/PERMIT SET	06-01-23

DRAWN BY: BDG

PANDA PROJECT #: D24956
PANDA STORE #: TBD
ARCH PROJECT #: 239201



SCOTT ROBERT NELSON, P.E.
NC LIC. # 049030

PANDA EXPRESS

PANDA HOME 2600
450 Kannapolis Parkway
Concord, NC 28027

M-100

H.V.A.C. FLOOR AND
ROOF PLAN

PANDA HOME 2600 R3

PATENT NUMBERS

EXHAUST HOODS ND-2/BD-2/SND-2 (CANADA) - CA PATENT 2520435 C.

HOOD INFORMATION - JOB#5986683																				
HOOD NO	TAG	MODEL	MANUFACTURER	LENGTH	MAX COOKING TEMP	TYPE	APPLIANCE DUTY	DESIGN CFM/FT	TOTAL EXH CFM	EXHAUST PLENUM RISER(S)						TOTAL SUPPLY CFM	HOOD CONSTRUCTION	HOOD CONFIG		
										WIDTH	LENG	HEIGHT	DIA	CFM	VEL			SP	END TO	ROW
1		4824 ND-2	CAPTIVEAIRE	13' 0"	600 DEG	I	HEAVY	262	3400			4'	18"	3400	1924	-1.202"	0	430 SS WHERE EXPOSED	LEFT	ALONE
2		4824 ND-2	CAPTIVEAIRE	11' 2"	600 DEG	I	HEAVY	260	2900			4'	18"	2900	1641	-0.897"	0	430 SS WHERE EXPOSED	RIGHT	ALONE
3	MISC	226 ACPSP-ONLY	CAPTIVEAIRE	11' 9"	300 DEG	I	N/A	0	0								2520	430 SS WHERE EXPOSED	ALONE	ALONE
4	MISC	226 ACPSP-ONLY	CAPTIVEAIRE	14' 4"	300 DEG	I	N/A	0	0								2520	430 SS WHERE EXPOSED	ALONE	ALONE

[illegible]

HOOD OPTIONS		
HOOD NO	TAG	OPTION
1		LEFT END STANDOFF (FINISHED) 3" WIDE 48' LONG. RISER SENSOR INSTALL 6IN PLEN.
2		RISER SENSOR INSTALL 6IN PLEN.

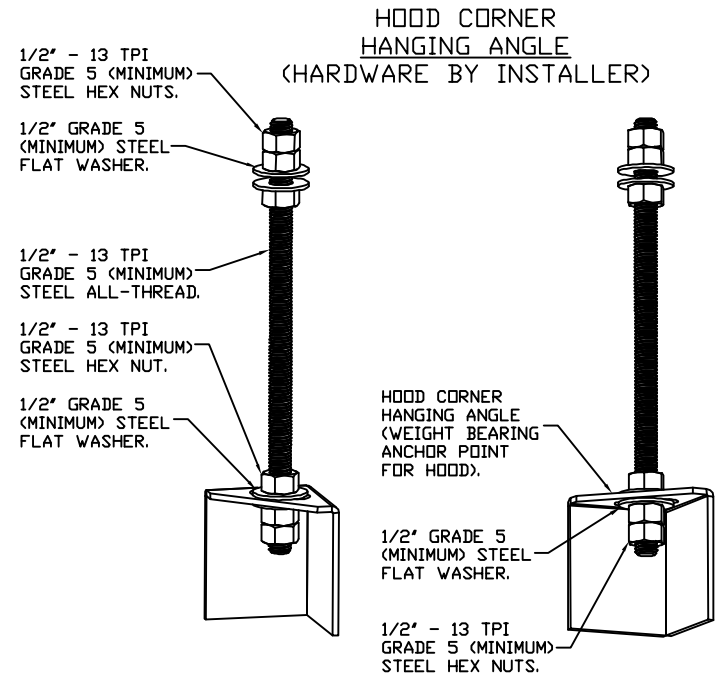
PERFORATED SUPPLY PLENUM(S)							RISER(S)				
HOOD NO	TAG	POS	LENGTH	WIDTH	HEIGHT	TYPE	WIDTH	LENG	DIA	CFM	SP
3	Front	141'	10'	6'	AC			8"	236	0.135'	
					AC			8"	236	0.135'	
	Back	141'	12'	6'	MUA	10"	28"	1260	0.530'		
					MUA	10"	28"	1260	0.530'		
4	Front	172'	10'	6'	AC			8"	236	0.122'	
					AC			8"	236	0.122'	
	Back	172'	12'	6'	MUA	10"	28"	1254	0.497'		
					MUA	10"	28"	1254	0.497'		

WALL-MOUNT UTILITY CABINET							
UTILITY CABINET(S)							
HOOD NO	LOCATION	SIZE	FIRE SYSTEM		ELECTRICAL	SWITCHES	WEIGHT
			TYPE	SIZE	MODEL #	QUANTITY	
1	WALL MNT	12"x54"x24"	ANSUL R-102	3.0/3.0/3.0	DCV-2111	1 LIGHT 1 FAN	305.00 LBS

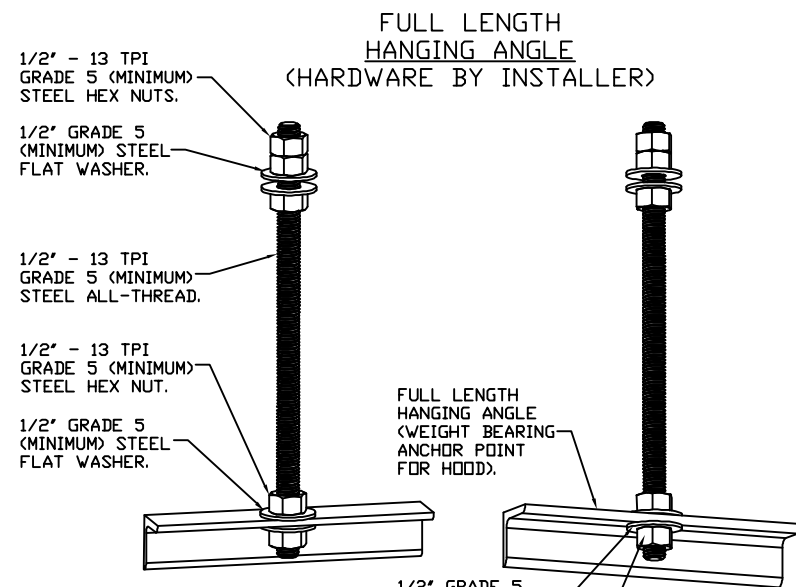
FIRE SYSTEM INFORMATION - JOB#5986683						
FIRE SYSTEM NO	TAG	TYPE	SIZE	FLOW POINTS	INSTALLATION	
					SYSTEM	LOCATION ON HOOD
1		ANSUL R102	3.0/3.0/3.0	29	WALL UTILITY CABINET LEFT	N/A

GAS VALVE(S)				
FIRE SYSTEM NO	TAG	TYPE	SIZE	SUPPLIED BY
1		MECHANICAL	2.000	CAPTIVEAIRE SYSTEMS

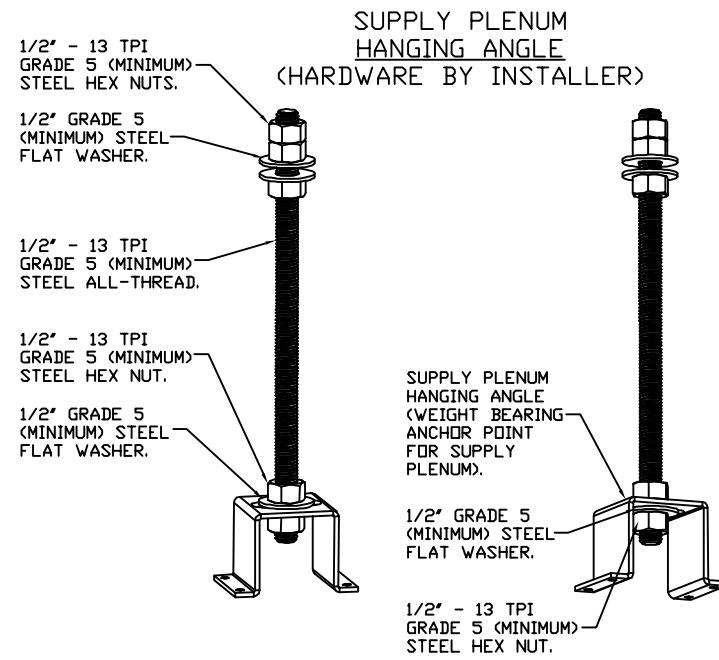
FOR QUESTIONS CALL THE
CAPTIVEAIRE
SOUTHERN CA NATIONAL ACCOUNTS OFFICE
3002 DOW AVENUE, SUITE 410
TUSTIN, CA 92780
TEL: 714-677-2963 EMAIL: REG83@CAPTIVEAIRE.COM



HANGING ANGLE MUST BE SUPPORTED WITH 1/2" - 13 TPI GRADE 5 (MINIMUM) ALL-THREAD. SANDWICH HANGING ANGLES AND CEILING ANCHOR POINTS WITH 1/2" GRADE 5 (MINIMUM) STEEL FLAT WASHERS AND 1/2" - 13 TPI GRADE 5 (MINIMUM) HEX NUTS AS SHOWN. MUST USE DOUBLED HEX NUT CONFIGURATION BENEATH HOOD HANGING ANGLES AND ABOVE CEILING ANCHORS. MAINTAIN 1/4" OF EXPOSED THREADS BENEATH BOTTOM HEX NUT. TORQUE ALL HEX NUTS TO 57 FT-LBS.



HANGING ANCHOR MUST BE SUPPORTED WITH 1/2" - 13 TPI GRADE 5 (MINIMUM) ALL-THREAD. SANDWICH HANGING ANGLES AND CEILING ANCHOR POINTS WITH 1/2" GRADE 5 (MINIMUM) STEEL FLAT WASHERS AND 1/2" - 13 TPI GRADE 5 (MINIMUM) HEX NUTS AS SHOWN. MUST USE DOUBLED HEX NUT CONFIGURATION ABOVE CEILING ANCHORS. SINGLE HEX NUT BENEATH HANGING ANGLE IS ACCEPTABLE FOR FULL LENGTH HANGING ANGLES. MAINTAIN 1/4" OF EXPOSED THREADS BENEATH BOTTOM HEX NUT. TORQUE ALL HEX NUTS TO 57 FT-LBS.



HANGING ANGLE MUST BE SUPPORTED WITH 1/2" - 13 TPI GRADE 5 (MINIMUM) ALL-THREAD, SANDWICH HANGING ANGLES AND CEILING ANCHOR POINTS WITH 1/2" GRADE 5 (MINIMUM) STEEL FLAT WASHERS AND 1/2" - 13 TPI GRADE 5 (MINIMUM) HEX NUTS AS SHOWN. MUST USE DOUBLED HEX NUT CONFIGURATION ABOVE CEILING ANCHORS. SINGLE HEX NUT BENEATH HANGING ANGLE IS ACCEPTABLE FOR PSP HANGING ANGLES. MAINTAIN 1/4" OF EXPOSED THREADS BENEATH BOTTOM HEX NUT. TORQUE ALL HEX NUTS TO 57 FT-LBS.

KPI ENGINEERING, INC.

PROFESSIONAL ENGINEERS

"No matter the Scope, KPI has YOU Covered"

3203 QUEEN PALM DRIVE
TAMPA, FLORIDA 33619
PHONE (813) 241-6488
FAX (813) 241-6498

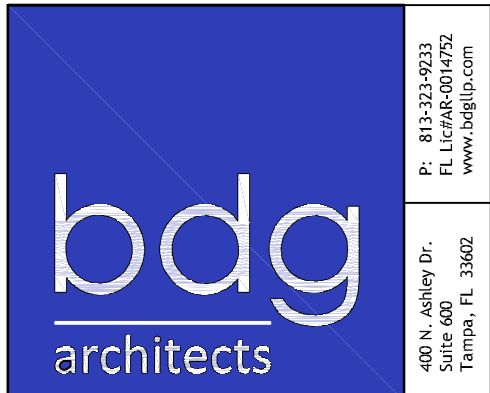
BOARD OF PROFESSIONAL ENGINEERS - LICENSE # C-4670



All ideas, designs, arrangement and plans indicated or represented by this drawing are the property of Panda Express Inc. and were created for use on this specific project. None of these ideas, designs, arrangements or plans may be used by or disclosed to any person, firm, or corporation without the written permission of Panda Express Inc.

REVISIONS:		
ISSUE DATE:		
CHECK SET		04-20-23
BID/PERMIT SET		06-01-23

PANDA PROJECT #:	D24956
PANDA STORE #:	TBD
ARCH PROJECT #:	239201

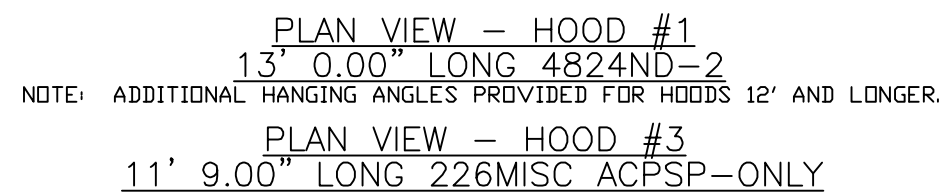
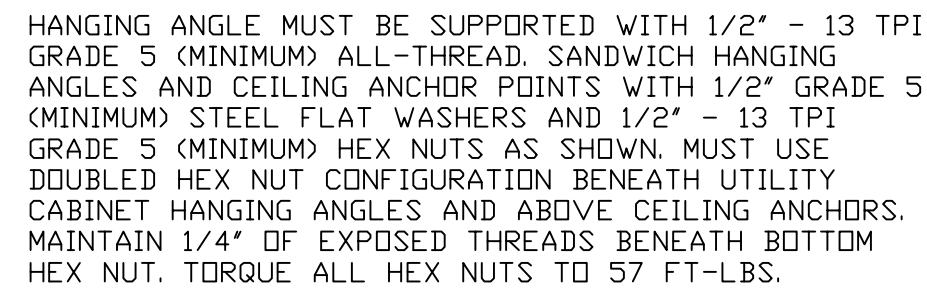


SCOTT ROBERT NELSON, P.E.
NC LIC. # 049030

PANDA HOME 2600
50 Kannapolis Parkway
Concord, NC 28027

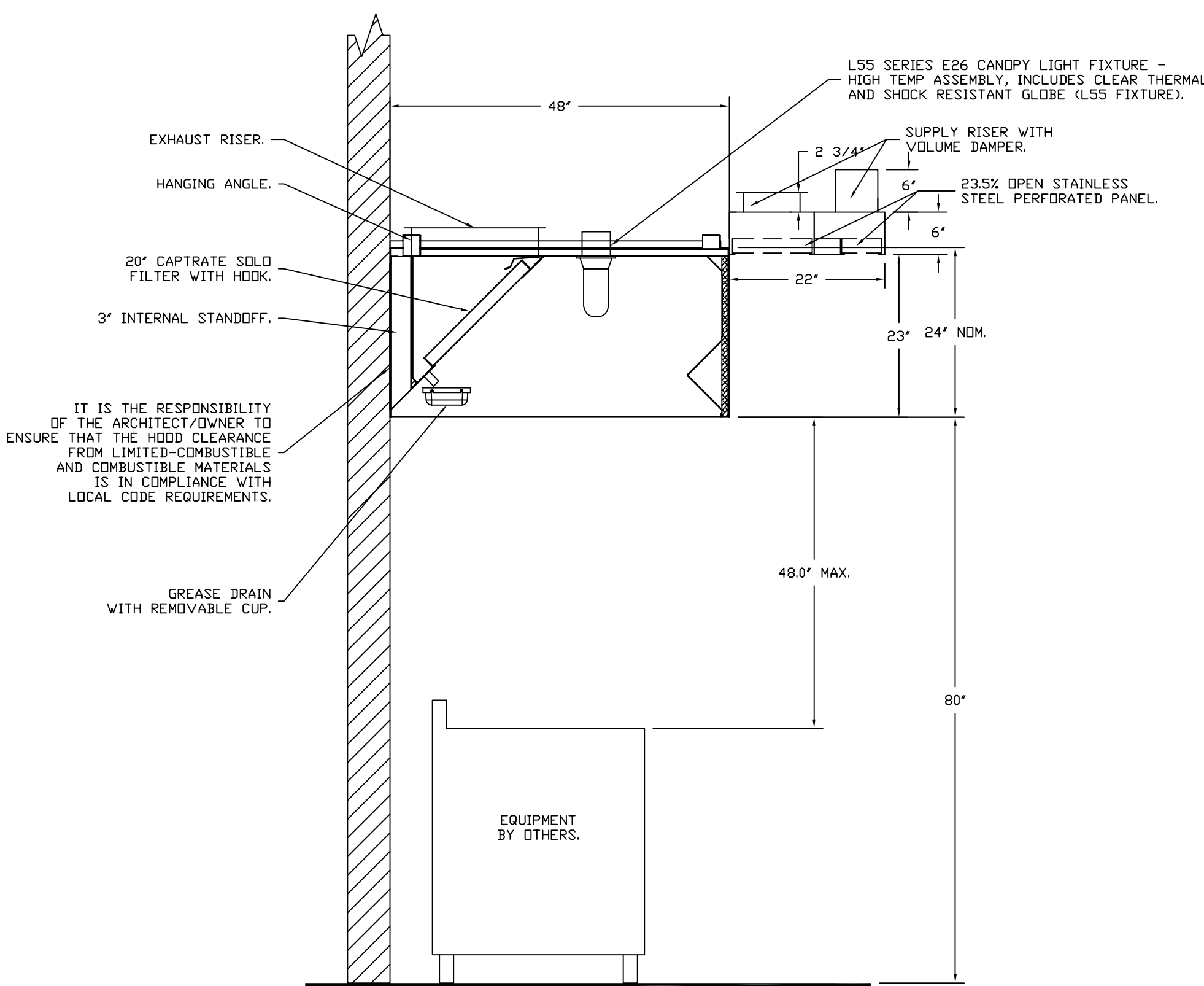
HOOD DETAIL PLAN

PANDA HOME 2600 R3



CAPTIVE-AIRE HOODS ARE
BUILT IN COMPLIANCE WITH
UL 710 AND NFPA 96
AND ARE RECOGNIZED BY ONE
OR MORE OF THE FOLLOWING

ETL SANITATION LISTED
ETL LISTED
FILE# 102900319PRT-001




SECTION VIEW - MODEL 4824ND-2-ACPSP-F
HOOD - #1

REVISIONS	
DESCRIPTION	DATE:
△	
△	
△	
△	
△	

Panda Express – Concord NC (D24956)

450 Kannapolis Parkway,

Concord, NC, 28027



3002 Dow Ave., Suite 410, Tustin, CA. 92780
 PHONE: (714) 677-2863 EMAIL: negb3@capliveshire.com


DATE: 5/4/2023

DWG.#: 5986683

DRAWN BY: AH-83

SCALE: 3/4" = 1'-0"


MASTER DRAWING



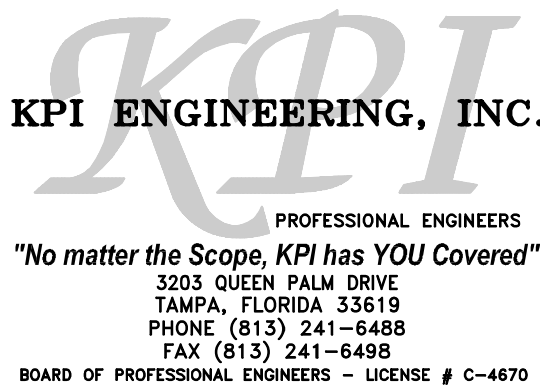
3002 Dow Ave., Suite 410, Tustin, CA. 92780
 PHONE: (714) 677-2863 EMAIL: negb3@capliveshire.com

SHEET NO.

2



3002 Dow Ave., Suite 410, Tustin, CA. 92780
 PHONE: (714) 677-2863 EMAIL: negb3@capliveshire.com



PANDA EXPRESS, INC.
1683 Walnut Grove Ave.
Rosemead, California
91770
Telephone: 626.799.9898
Facsimile: 626.372.8288

All ideas, designs, arrangement and plans indicated or represented by this drawing are the property of Panda Express Inc. and were created for use on this specific project. None of these ideas, designs, arrangements or plans may be used by or disclosed to any person, firm, or corporation without the written permission of Panda Express Inc.

REVISIONS:

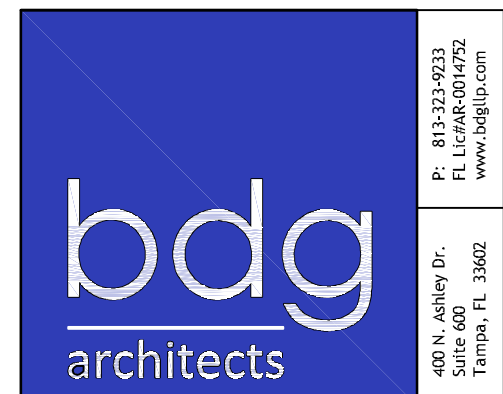
ISSUE DATE:	
CHECK SET	04-20-23
BID/PERMIT SET	06-01-23

DRAWN BY: BDG

PANDA PROJECT #: D24956

PANDA STORE #: TBD

ARCH PROJECT #: 239201



SCOTT ROBERT NELSON, P.E.
NC LIC. # 049030

PANDA EXPRESS

PANDA HOME 2600
450 Kannapolis Parkway
Concord, NC 28027

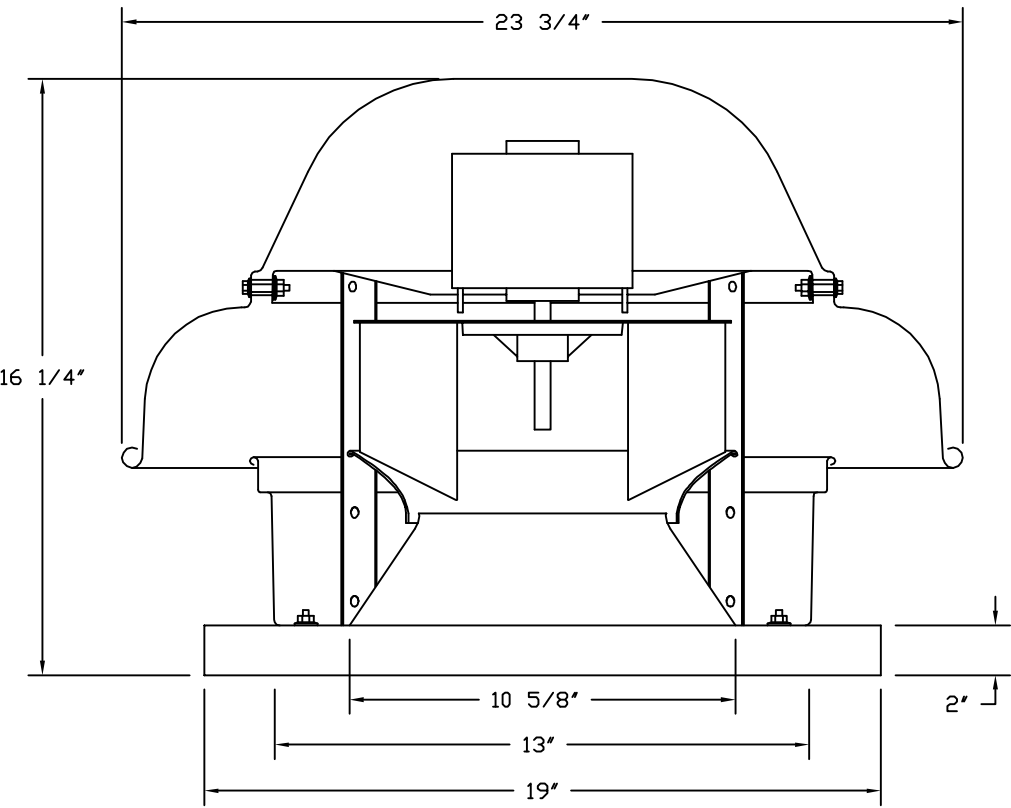
M-401

HOOD DETAIL PLAN

PANDA HOME 2600 R3

PANDA HOME 2600 R3

FAN #3 DR12HFA - EXHAUST FAN

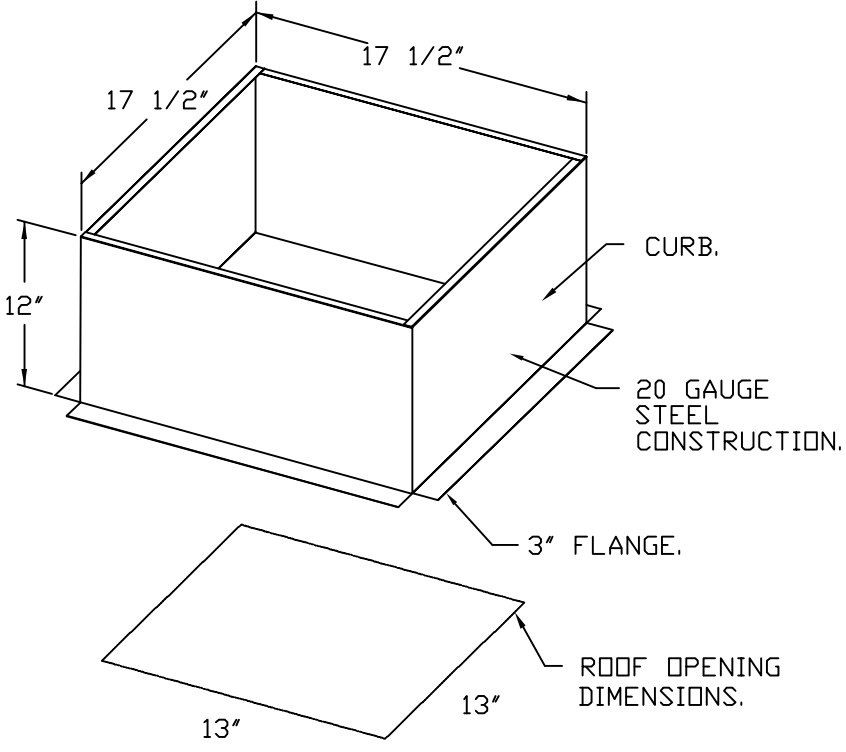


FEATURES:

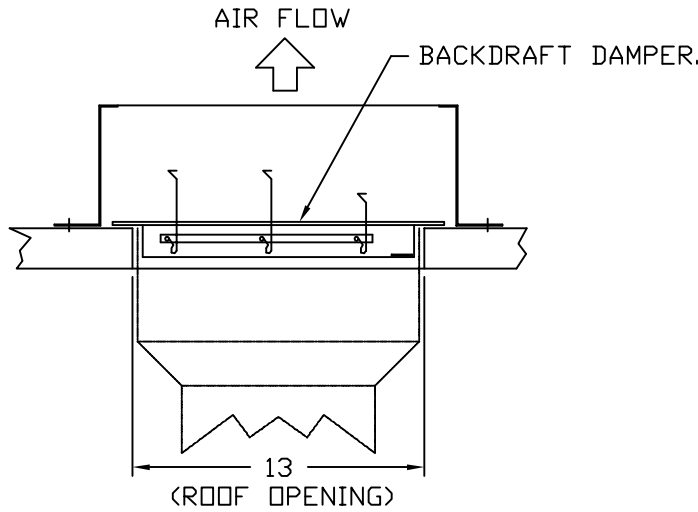
- DIRECT DRIVE CONSTRUCTION (NO BELTS/PULLEYS).
- ROOF MOUNTED FANS.
- UL705.
- SAFETY DISCONNECT.
- STANDARD BIRD SCREEN.
- SPEED CONTROL.
- THERMAL OVERLOAD PROTECTION (SINGLE PHASE).

OPTIONS

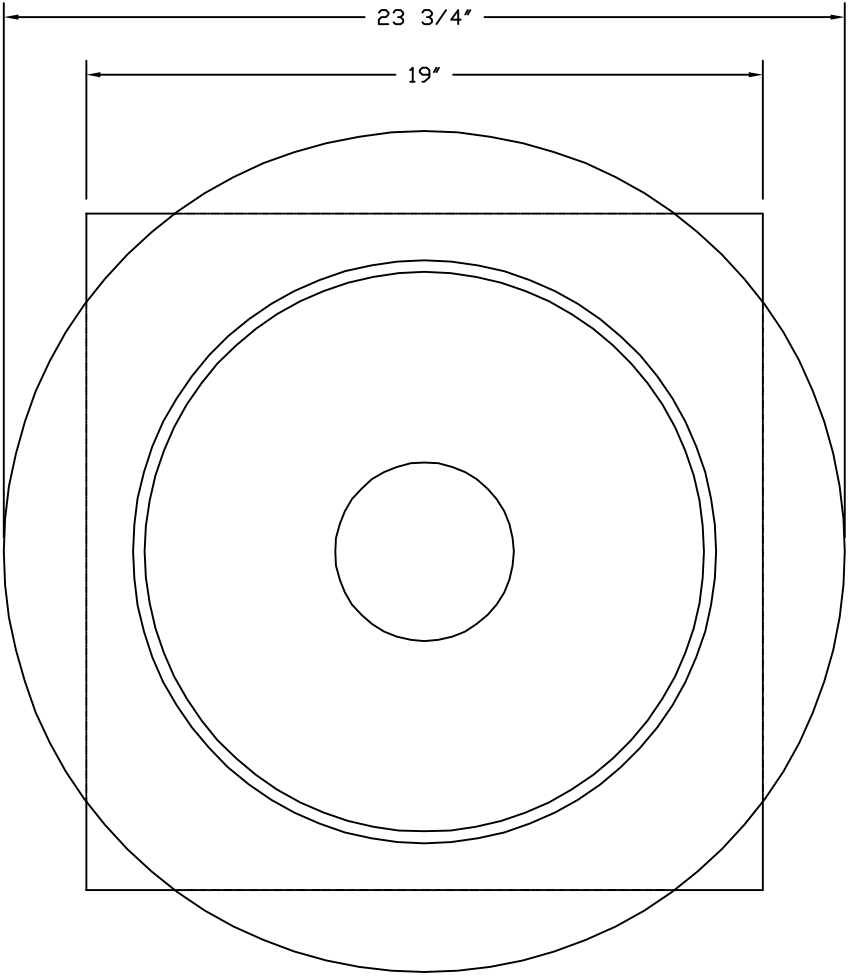
- ECM WIRING PACKAGE - MANUAL OR 0-10VDC REFERENCE SPEED CONTROL
- RTC- (TELCO MOTOR), CCW ROTATION.
- 1 12-BDD DAMPER.
- 2 YEAR PARTS WARRANTY.



BACKDRAFT DAMPER INSTALLATION



TOP VIEW



NOTE: UNLESS OTHERWISE STATED, PANDA RESTAURANT GROUP SHALL PROVIDE ALL EQUIPMENT ON THE FOLLOWING CAPTIVEAIRE SHEETS, INCLUDING: HOODS, FIRE SYTEM, EXHAUST FANS, SUPPLY FAN, BATHROOM FAN AND ELECTRICAL INTERLOCK PACKAGE

DOUBLE WALL DUCT BY MECHANICAL PLEASE USE CONTACT BELOW FOR PRICING

ANSUL GAS VALVE:

THE ANSUL GAS VALVE IS PROVIDED BY CAPTIVEAIRE SYSTEMS. CONTACT OUR OFFICE WITH THE VALVE SIZE 3 DAYS IN ADVANCE OF WHEN IT IS NEEDED ON SITE.

FOR QUESTIONS CALL THE CAPTIVEAIRE SOUTHERN CA NATIONAL ACCOUNTS OFFICE

3002 DOW AVENUE, SUITE 410
TUSTIN, CA 92780
TEL: 714-677-2963 EMAIL: REG83@CAPTIVEAIRE.COM

REVISIONS

DESCRIPTION	DATE

www.captiveaire.com

Southern CA National Accounts
3002 Dow Ave., Suite 410, Tustin, CA 92780 PHONE: (714) 677-2963 EMAIL: reg83@captiveaire.com

Panda Express - Concord NC (D24956)
450 Kannapolis Parkway,
Concord, NC, 28027

DATE: 5/4/2023

DWG.#: 5986683

DRAWN BY: AH-83

SCALE: 3/4" = 1'-0"

MASTER DRAWING

SHEET NO. 5



PANDA EXPRESS, INC.
1683 Walnut Grove Ave.
Rosemead, California
91770
Telephone: 626.799.9898
Facsimile: 626.372.8288

All ideas, designs, arrangement and plans indicated or represented by this drawing are the property of Panda Express Inc. and were created for use on this specific project. None of these ideas, designs, arrangements or plans may be used by or disclosed to any person, firm, or corporation without the written permission of Panda Express Inc.

REVISIONS:

ISSUE DATE:

CHECK SET	04-20-23
BID/PERMIT SET	06-01-23

DRAWN BY: BDG

PANDA PROJECT #: D24956
PANDA STORE #: TBD
ARCH PROJECT #: 239201



SCOTT ROBERT NELSON, P.E.
NC LIC. # 049030

PANDA EXPRESS

PANDA HOME 2600
450 Kannapolis Parkway
Concord, NC 28027

M-404

HOOD DETAIL PLAN

PANDA HOME 2600 R3

PROFESSIONAL ENGINEERS
"No matter the Scope, KPI has YOU Covered"
3303 QUEEN PALM DRIVE
TAMPA, FLORIDA 33619
PHONE (813) 241-6488
FAX (813) 241-6488
BOARD OF PROFESSIONAL ENGINEERS - LICENSE # C-4470

- FAN #4 A3-D500-24D-MPU - HEATER
1. DIRECT GAS FIRED HEATED MAKE UP AIR UNIT WITH 24" MIXED FLOW DIRECT DRIVE FAN AND 12" BURNER.
 2. INTAKE HOOD WITH EZ FILTERS.
 3. DOWN DISCHARGE - AIR FLOW RIGHT -> LEFT.
 4. GAS PRESSURE GAUGE, 0-35", 2.5" DIAMETER, 1/4" THREAD SIZE.
 5. GAS PRESSURE GAUGE, -5 TO +15 INCHES WC, 2.5" DIAMETER, 1/4" THREAD SIZE.
 6. MOTORIZED BACK-DRAFT DAMPER 30" X 30" FOR SIZE 3 STANDARD & MODULAR HEATER UNITS W/EXTENDED SHAFT, STANDARD GALVANIZED CONSTRUCTION, 3/4" REAR FLANGE, LOW LEAKAGE, NFBUP-S ACTUATOR INCLUDED.
 7. 10 TON, DUAL CIRCUIT (5/5) MODULAR PACKAGED COOLING OPTION FOR SIZE 3 DP/EH MODULAR PACKAGED UNIT, INCLUDES CONDENSER, DX COIL, FILTER/DRYER KIT, THERMAL EXPANSION VALVE, R410A REFRIGERANT, AND REFRIGERANT PIPING (3,600 TO 6,000 CFM) WHEN ORDERED WITH OPPOSITE AIRFLOW CONDENSERS ACCESS AND COIL PIPING WILL REMAIN IN STANDARD POSITION. DRAIN AND SLEDS WILL MOVE TO THE OPPOSITE SIDE. ANY OTHER CHANGE WILL REQUIRE CLJ. CONDENSERS REQUIRE SEPARATE 208V, 3 PHASE POWER SUPPLY UNLESS ORDERED WITH SINGLE POINT CONNECTION. COIL = 362X602M.
 8. DOWNTURN PLENUM FOR SIZE 3 COOLING COIL MODULE - REQUIRED FOR DOWN DISCHARGE COOLING COIL APPLICATIONS.
 9. SHIP CONDENSERS LOOSE. THE REFRIGERATION LINES WILL NEED TO BE STUBBED OUT 12 INCHES. THE SUCTION LINES NEEDS TO BE INSULATED INSIDE THE COIL MODULE. ROTARY DISCONNECT SHOULD NOT BE INSTALLED ON THE POST, BLANK POST SHOULD BE USED IN PLACE. ALL PIPING AND WIRING BETWEEN INDOOR AND OUTDOOR UNITS BY OTHERS.
 10. LOW FIRE START. ALLOWS THE BURNER CIRCUIT TO ENERGIZE WHEN THE MODULATION CONTROL IS IN A LOW FIRE POSITION.
 11. BUTTERFLY MOD VALVE OPTION FOR MOD SIZE 3 4" MOD VALVES.
 12. UNIT MOUNTED VFD FOR USE WITH ECPM03.
 13. HINGED DOUBLE WALL INSULATED DOOR ASSEMBLY (BURNER/BLOWER/MPU SECTION).
 14. 2 YEAR PARTS WARRANTY.
- NOTE: SUPPLY DUCT MUST BE INSTALLED TO MEET SMACNA STANDARDS. A MINIMUM STRAIGHT DUCT LENGTH MUST BE MAINTAINED DOWNSTREAM OF UNIT DISCHARGE AS OUTLINED IN AMCA PUBLICATION 201. WHEN USING RECTANGULAR DUCTWORK, ELBOWS MUST BE RADIUS THROAT, RADIUS BACK WITH TURNING VANES. FLEXIBLE DUCTWORK AND SQUARE THROAT/SQUARE BACK ELBOWS SHOULD NOT BE USED. ANY TRANSITION AND/OR TURNS IN THE DUCTWORK WILL CAUSE SYSTEM EFFECT. SYSTEM EFFECT WILL DRASTICALLY INCREASE STATIC PRESSURE AND REDUCE AIRFLOW. DO NOT RELY ON UNIT TO SUPPORT DUCT IN ANY WAY. FAILURE TO PROPERLY SIZE DUCTWORK MAY CAUSE SYSTEM EFFECTS AND REDUCE PERFORMANCE OF THE EQUIPMENT. SUGGESTED STRAIGHT DUCT SIZE IS 24" X 24".
- NOTE: CONDENSERS SHIPPED LOOSE FOR REMOTE MOUNTING. ALL WIRING AND PIPING BETWEEN INDOOR AND OUTDOOR UNIT TO BE COMPLETED BY OTHERS.

SUPPLY SIDE HEATER INFORMATION:

WINTER TEMPERATURE = 20°F. TEMP. RISE = 50°F.
BTUS CALCULATED OFF ACTUAL AIR DENSITY.
OUTPUT BTUS AT ALTITUDE OF 0.0 FT. = 298724.
INPUT BTUS AT ALTITUDE OF 0.0 FT. = 324700.

NOTE: UNLESS OTHERWISE STATED, PANDA RESTAURANT GROUP SHALL PROVIDE ALL EQUIPMENT ON THE FOLLOWING CAPTIVEAIRE SHEETS, INCLUDING: HOODS, FIRE SYTEM, EXHAUST FANS, SUPPLY FAN, BATHROOM FAN AND ELECTRICAL INTERLOCK PACKAGE

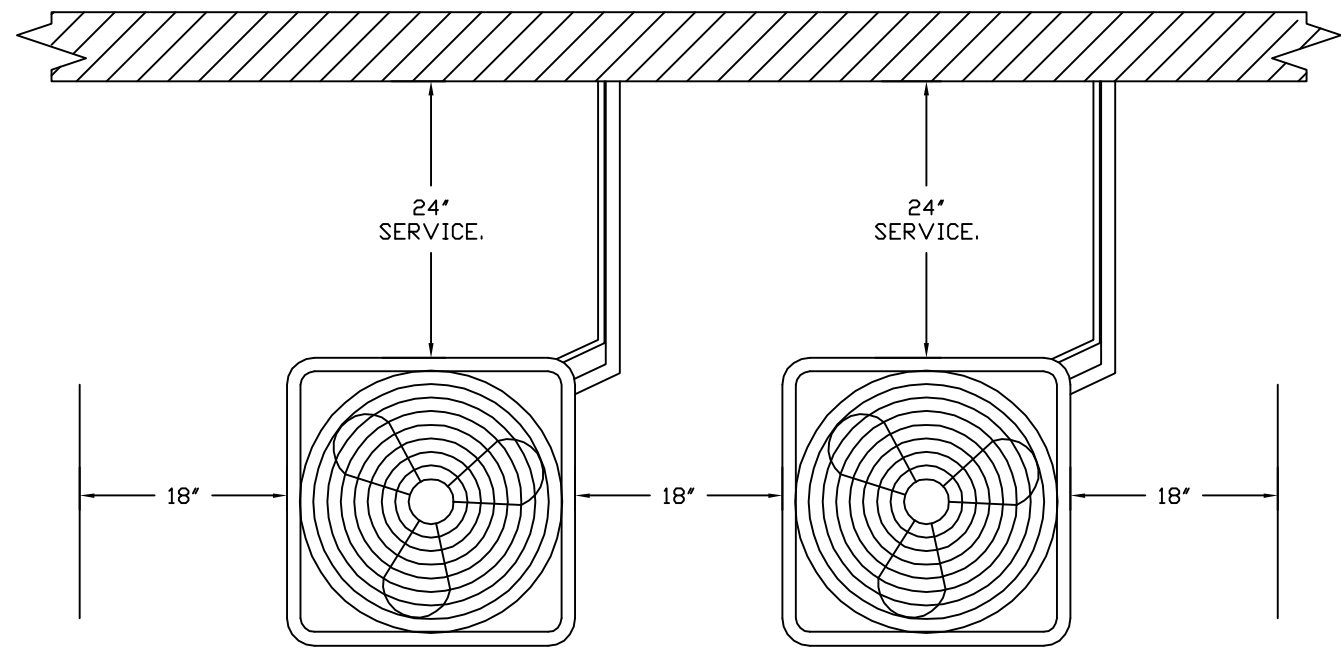
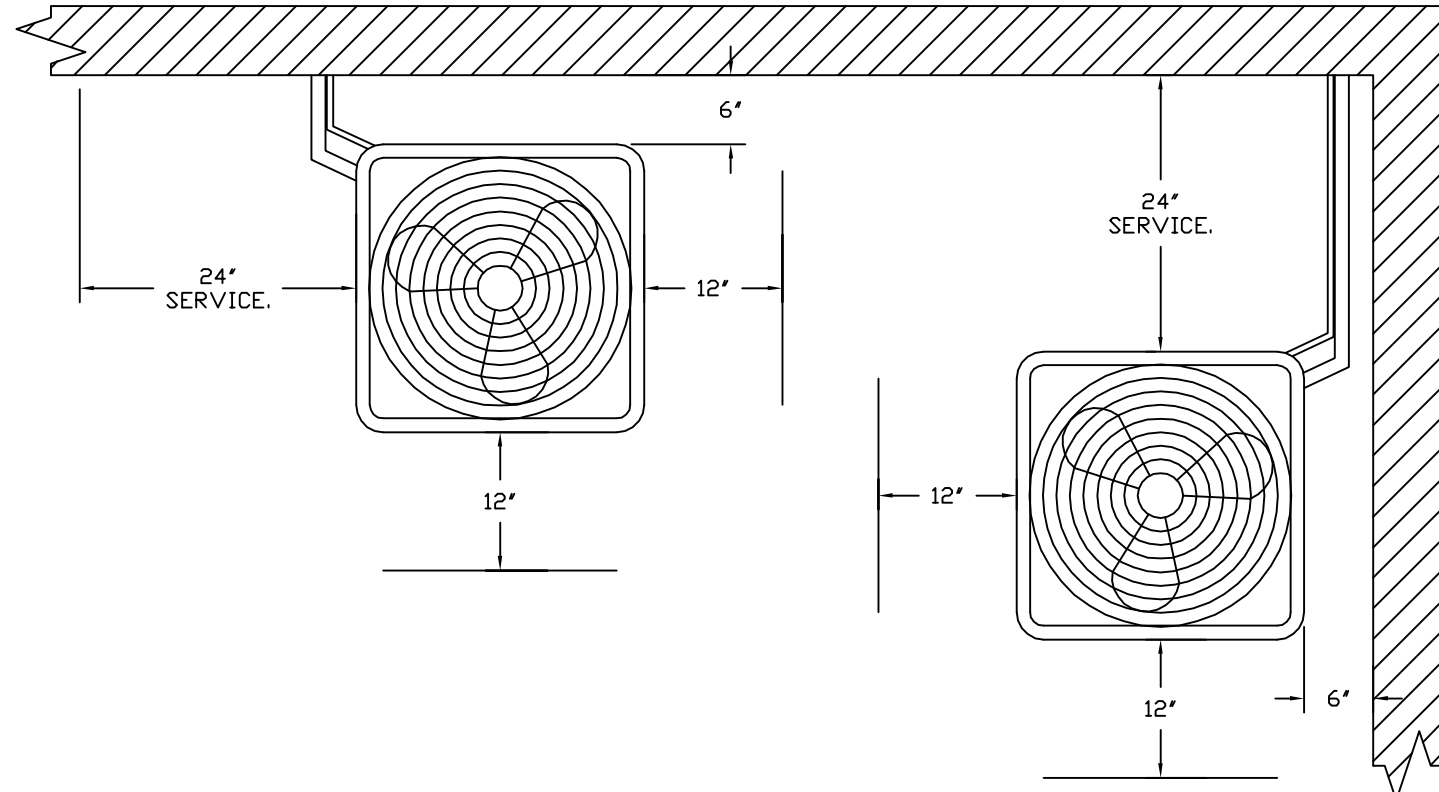
DOUBLE WALL DUCT BY MECHANICAL PLEASE USE CONTACT BELOW FOR PRICING

ANSUL GAS VALVE:

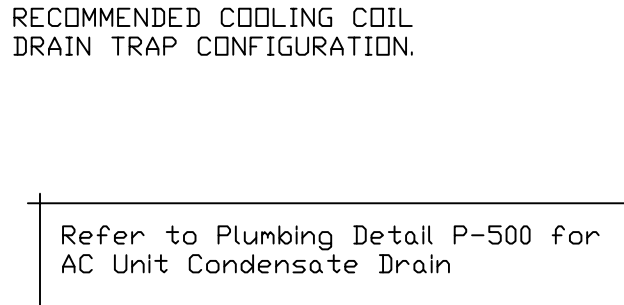
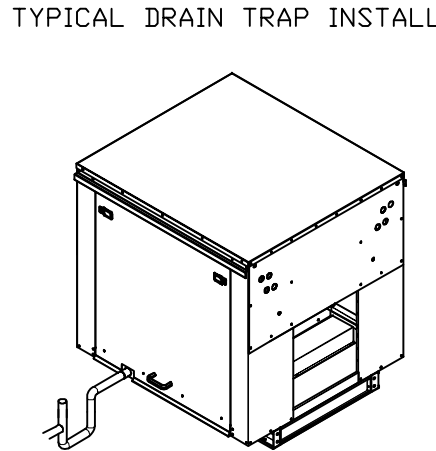
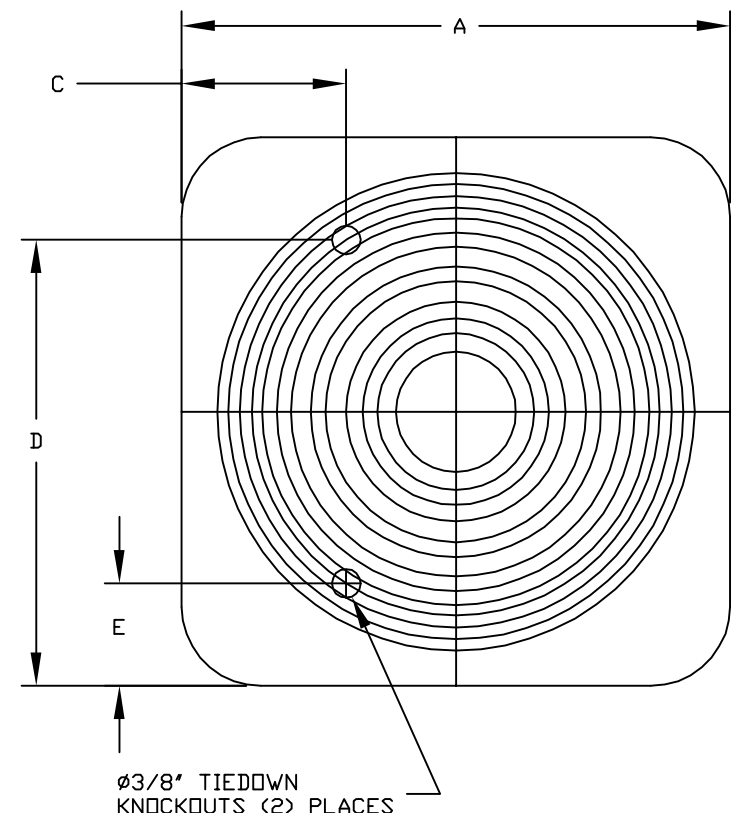
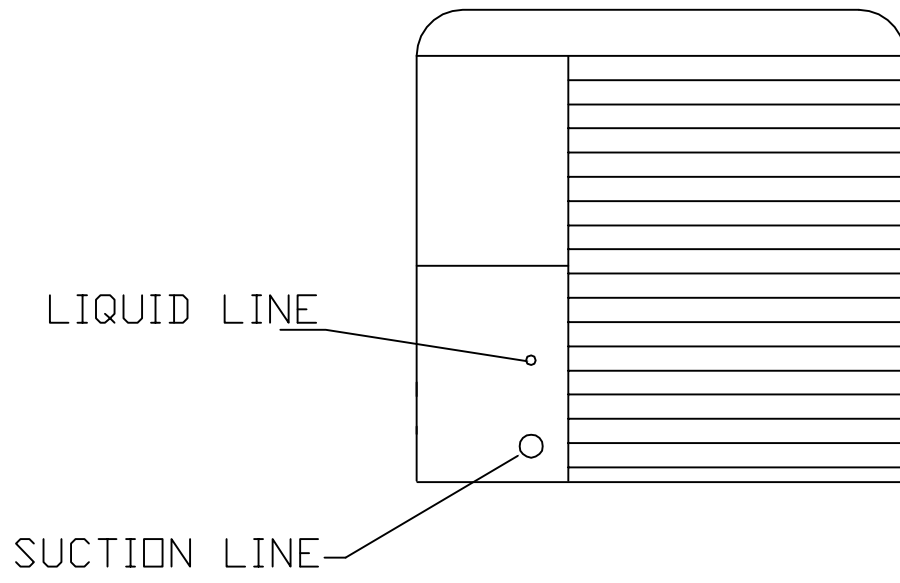
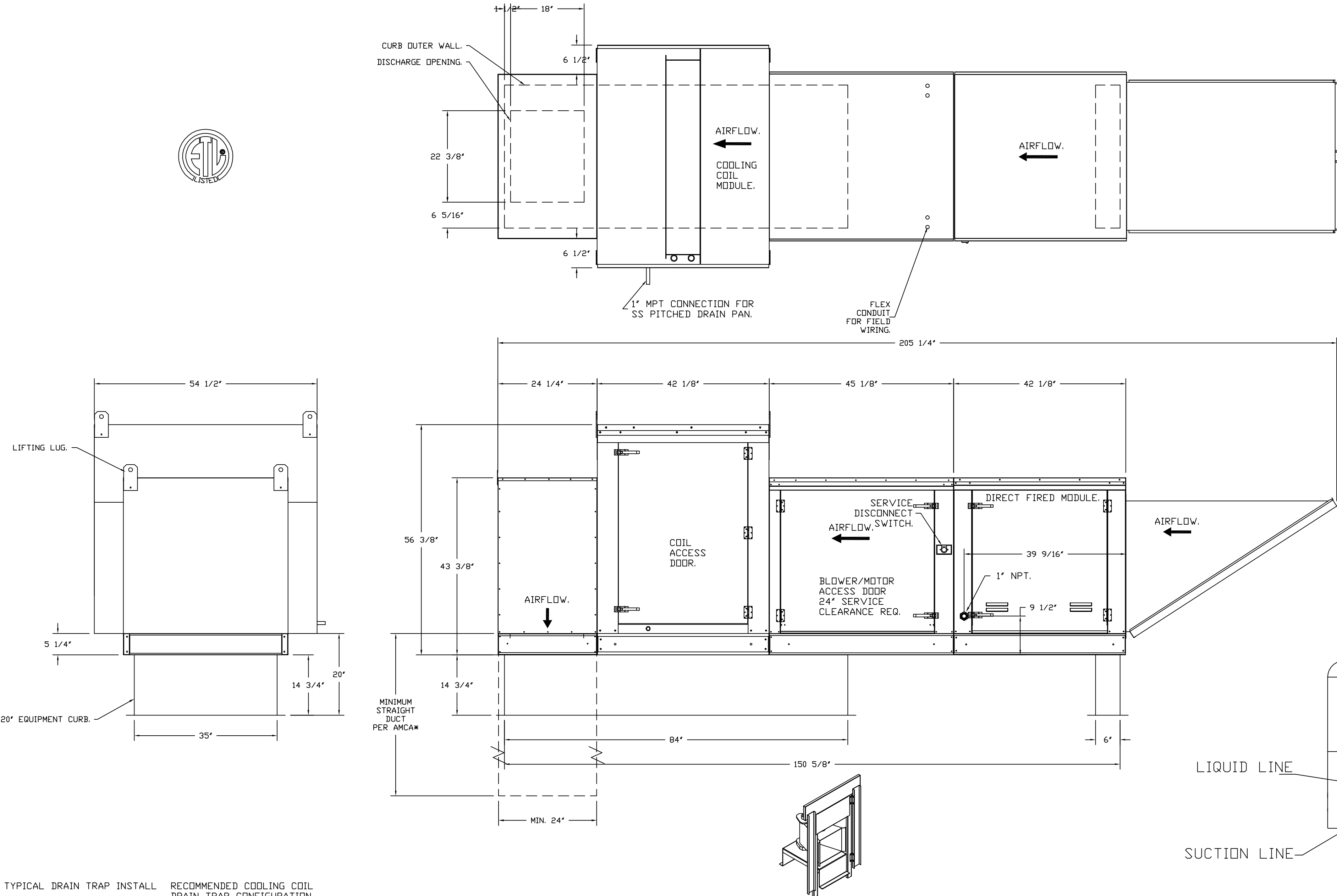
THE ANSUL GAS VALVE IS PROVIDED BY CAPTIVEAIRE SYSTEMS. CONTACT OUR OFFICE WITH THE VALVE SIZE 3 DAYS IN ADVANCE OF WHEN IT IS NEEDED ON SITE.

FOR QUESTIONS CALL THE CAPTIVEAIRE SOUTHERN CA NATIONAL ACCOUNTS OFFICE

3002 DOW AVENUE, SUITE 410
TUSTIN, CA 92780
TEL: 714-677-2963 EMAIL: REG83@CAPTIVEAIRE.COM



CONDENSER CLEARANCES
48" CLEARANCE REQUIRED ABOVE CONDENSERS.
(NOTE: **CONDENSERS SHOWN HERE ARE NOT DRAWN AT SCALE).



- NOTES: Important! Copper above roof deck where it is exposed. PVC below roof deck
- 1) 1" DIAMETER PVC PIPE ONLY.
 - 2) USE ONLY LOW PROFILE COUPLINGS.
 - 3) ADD CLEAN OUT AS SHOWN.

DIRECT FIRED (DP) PROFILE PLATE ASSEMBLY

DESCRIPTION:
DIRECT FIRED BURNERS SHALL HAVE PATENTED (US PATENT NO. US6629920B2), SELF-ADJUSTING PROFILE PLATES DESIGNED TO ENSURE PROPER AIR VELOCITY AND PRESSURE DROP ACROSS THE BURNER. PROFILE PLATES SHALL ALLOW BURNERS TO ACHIEVE CLEAN COMBUSTION BY LIMITING BY-PRODUCT LEVELS TO A MAXIMUM OF 50PPM OF CARBON MONOXIDE (CO), AND 0.5PPM OF NITROGEN DIOXIDE (NO2). DIRECT FIRED UNITS SHALL BE CONFIGURED WITH THE BLOWER/MOTOR DOWNSTREAM OF THE BURNER. THIS ARRANGEMENT WILL ENSURE A CONSISTENT AIRFLOW, REGARDLESS OF INLET AIR TEMPERATURE.

APPLICATION:
SPRING-LOADED BURNER PROFILE PLATES ARE ENGINEERED TO AUTOMATICALLY REACT TO THE MOMENTUM OF A FRESH AIR STREAM, WITHOUT THE NEED FOR ANY MOTORS OR ACTUATORS TO MECHANICALLY ADJUST THEM. WITH THIS FEATURE, ALL OF UNITS ARE DESIGNED FOR DEMAND CONTROL VENTILATION (DCV) REQUIREMENTS.

CERTIFICATIONS:
ALL PROFILE PLATE ASSEMBLIES SHALL BE INCLUDED IN THE DP UNITS ETL LISTING AND COMPLY WITH COMBINED SAFETY STANDARDS ANSI Z83.4 AND CSA 3.7 (NON-REGULATING OF HEATERS) AND ANSI Z83.9 (REGULATING OF HEATERS).

GENERAL CONSTRUCTION:
-PROFILE PLATES SHALL BE FORMED FROM G90 GALVANIZED STEEL.
-PROFILE PLATES SHALL VARY IN SIZE PER UNIT.
-PROFILE PLATES SHALL BE MOUNTED ALONG THE SAME PLANE AS THE DISCHARGE OF THE BURNER.
-DESIGN SHALL INCORPORATE PROPERLY TORQUED, PERMANENTLY MOUNTED SPRING HINGES.
-SPRING HINGES SHALL BE MADE FROM PLATED STEEL.

ALL DIMENSIONS ARE NOMINAL AND GIVEN IN INCHES.

MODEL	WEIGHT	UNIT DIMENSIONS					CONNECTION SIZES		NOMINAL TONNAGE
		A	B	C	D	E	SUCTION	LIQUID	
24ABB360	190 LBS	31-3/16	25-1/2	9-1/8	24-11/16	6-9/16	7/8	3/8	5

ELECTICAL INFORMATION

MODEL	V-PH	RLA	MCA	FUSE SIZE
24ABB360	208/230-3	16.0	21.4	30

KPI ENGINEERING, INC.
PROFESSIONAL ENGINEERS
"No matter the Scope, KPI has YOU Covered!"
3303 QUEEN PALM DRIVE
TAMPA, FLORIDA 33619
PHONE (813) 241-6488
FAX (813) 241-6488
BOARD OF PROFESSIONAL ENGINEERS - LICENSE # C-4470

REVISIONS

DESCRIPTION	DATE

CAPTIVEAIRE
www.captiveaire.com

Southern CA National Accounts
3002 Dow Ave., Suite 410, Tustin, CA 92780 PHONE: (714) 677-2963 EMAIL: reg83@captiveaire.com

Panda Express - Concord NC (D24956)
450 Kannapolis Parkway,
Concord, NC, 28027

DATE: 5/4/2023
DWG.#: 5986683
DRAWN BY: AH-83
SCALE: 3/4" = 1'-0"
MASTER DRAWING
SHEET NO. 6



PANDA EXPRESS, INC.
1683 Walnut Grove Ave.
Rosemead, California
91770
Telephone: 626.799.9898
Facsimile: 626.372.8288

All ideas, designs, arrangement and plans indicated or represented by this drawing are the property of Panda Express Inc. and were created for use on this specific project. None of these ideas, designs, arrangements or plans may be used by or disclosed to any person, firm, or corporation without the written permission of Panda Express Inc.

REVISIONS:

ISSUE DATE:

CHECK SET	04-20-23
BID/PERMIT SET	06-01-23

DRAWN BY: BDG

PANDA PROJECT #: D24956
PANDA STORE #: TBD
ARCH PROJECT #: 239201

bdg architects
1501 E. 15th Ave., Suite 400
Tampa, FL 33602
www.bdgja.com

SCOTT ROBERT NELSON, P.E.
NC LIC. # 049030

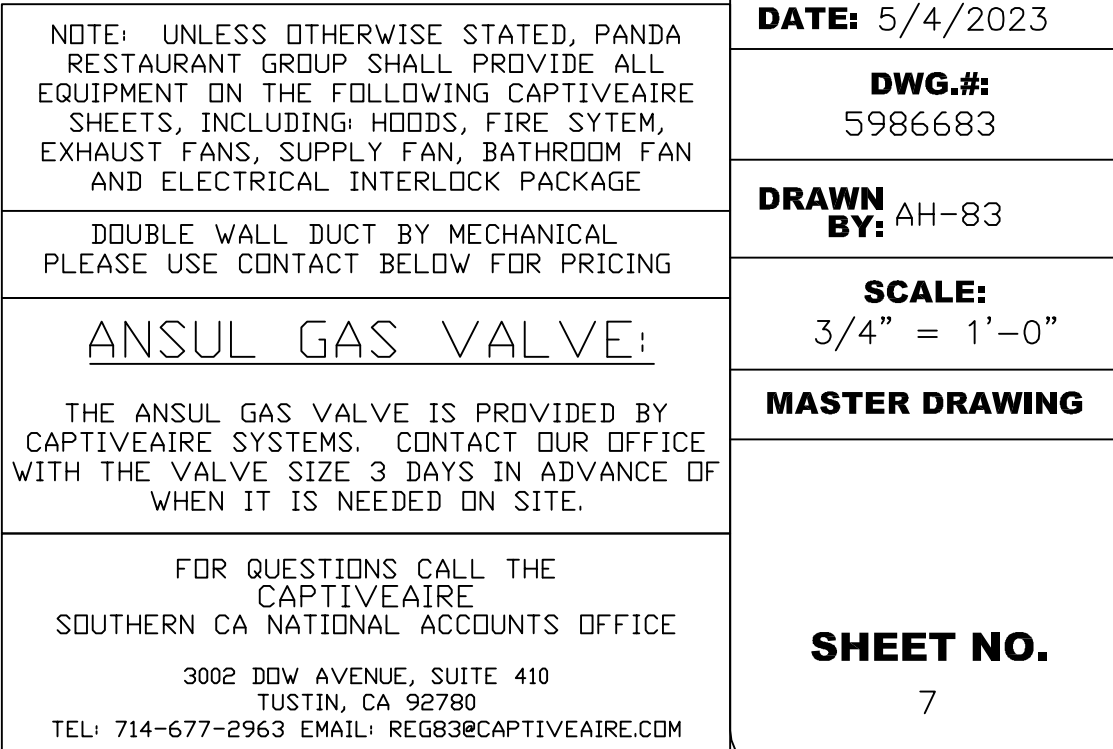
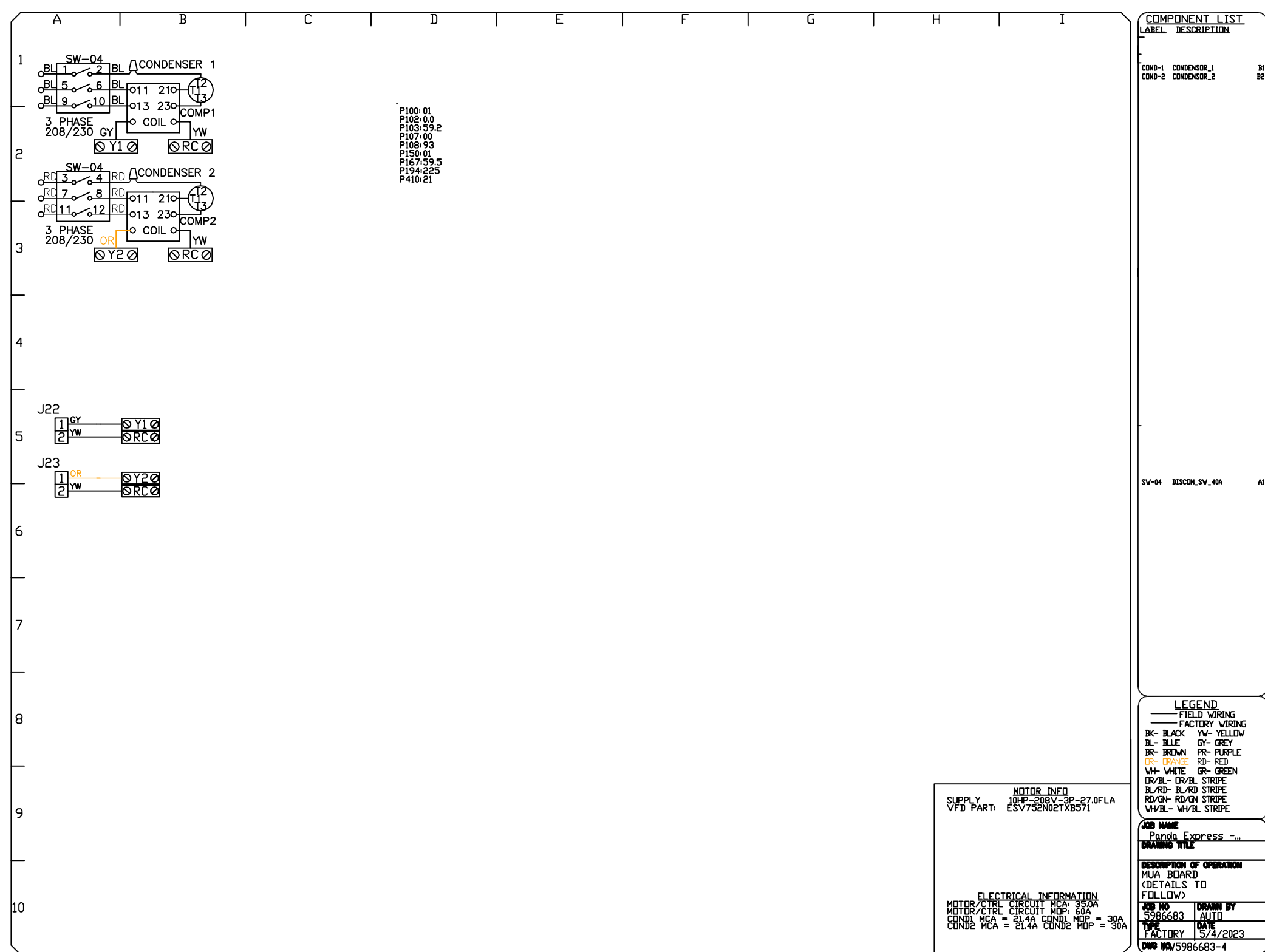
PANDA EXPRESS

PANDA HOME 2600
450 Kannapolis Parkway
Concord, NC 28027

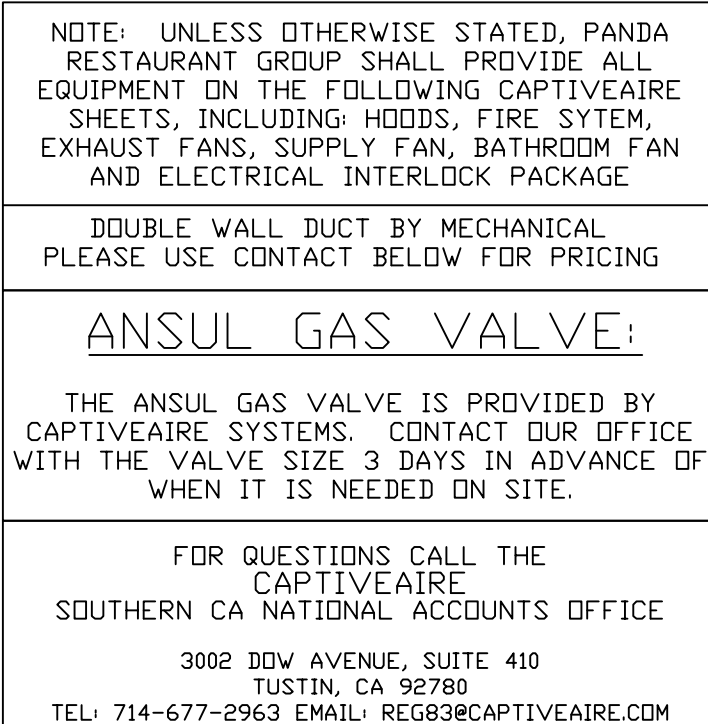
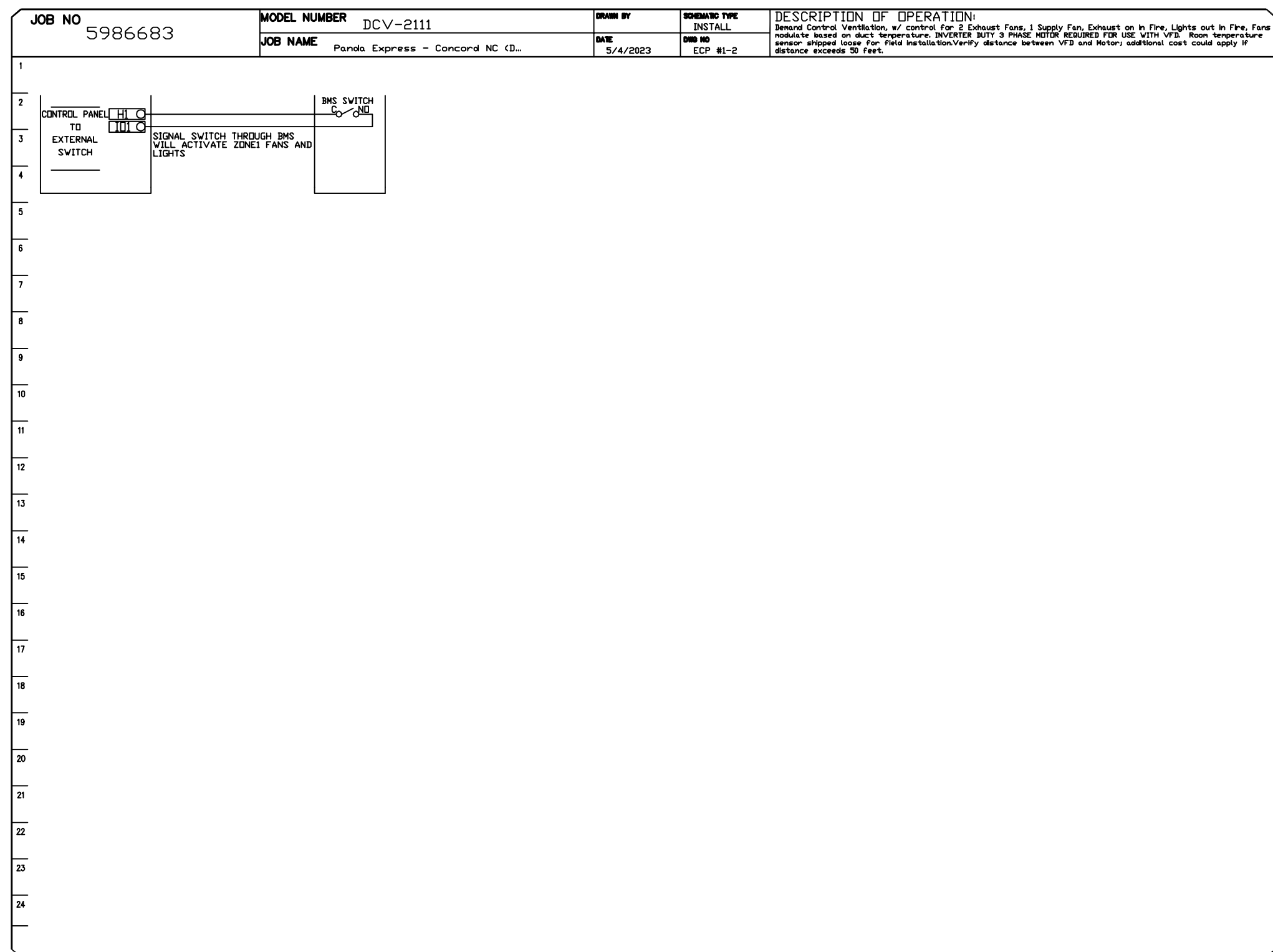
M-405

HOOD DETAIL PLAN

PANDA HOME 2600 R3



NO	TAG	PACKAGE #	LOCATION	SWITCHES		OPTION	FANS CONTROLLED							
				LOCATION	QUANTITY		FAN TAG	TYPE	+	HP	VOLTS	FLA		
1		DCV-2111	WALL UTILITY CABINET LEFT	SHIP LOOSE W/ PREWIRE	1 LIGHT 1 FAN	SMART CONTROLS DCV								
									EXHAUST	3	3.000	208	9.5	
									RICE	3	3.000	208	9.5	
									SUPPLY	3	10.000	208	27.0	



Panda Express - Concord NC (D24956)	
450 Kannapolis Parkway, Concord, NC, 28027	
DATE: 5/4/2023	
DWG.#: 5986683	
DRAWN BY: AH-83	
SCALE: 3/4" = 1'-0"	
MASTER DRAWING	
SHEET NO. 8	



TAG	PART #	CFM	GPM	ZONE	COVEREDBY	SP	WEIGHT	VELOCITY	QTY	DESCRIPTION
P1	DW1829DWLT-2R-S	3400				-0.009	50.46	1924.01	1	DOUBLE WALL DUCT - 18" INNER DUCT, 29" LONG - 2 LAYERS REDUCED CLEARANCE - 22" STAINLESS STEEL OUTER SHELL.
P2	DW1847DWAJD-2R-S	3400				-0.009	107.98	1924.01	1	DOUBLE WALL ADJUSTABLE DUCT - 18" INNER DUCT - 2 LAYERS REDUCED CLEARANCE - 22" STAINLESS STEEL OUTER SHELL. MIN LENGTH = 11' / MAX LENGTH = 48.5' / ADJUSTMENT = 30.5' / ADJUSTABLE SECTION MAY NEED TO BE CUT. INCLUDES SINGLE AND DOUBLE WALL "V" CLAMPS.
P3	DW1890DWASY-2R-S	3400				-0.115	45.59	1924.01	1	DOUBLE WALL DUCT - 18" INNER 90 DUCT - 2 LAYERS REDUCED CLEARANCE - 22" STAINLESS STEEL OUTER SHELL.
P4	DW1801DWOFFSETASY-2R-S	3400				-0.003	14.66	1924.01	1	DOUBLE WALL DUCT - 18" INNER DUCT RISER & 1 DEGREE OFFSET - 2 LAYERS REDUCED CLEARANCE - 22" STAINLESS STEEL OUTER SHELL.
P5	DW1847DWAJD-2R-S	3400				-0.012	107.98	1924.01	1	DOUBLE WALL ADJUSTABLE DUCT - 18" INNER DUCT - 2 LAYERS REDUCED CLEARANCE - 22" STAINLESS STEEL OUTER SHELL. MIN LENGTH = 11' / MAX LENGTH = 48.5' / ADJUSTMENT = 30.5' / ADJUSTABLE SECTION MAY NEED TO BE CUT. INCLUDES SINGLE AND DOUBLE WALL "V" CLAMPS.
P6	DW1801DWOFFSETASY-2R-S	3400				-0.003	14.66	1924.01	1	DOUBLE WALL DUCT - 18" INNER DUCT RISER & 1 DEGREE OFFSET - 2 LAYERS REDUCED CLEARANCE - 22" STAINLESS STEEL OUTER SHELL.
P7 ASSEMBLED W/P8	DW18DWT EASY-2R-S	3400		1		-0.184	55.68	1924.01	1	DOUBLE WALL DUCT - 18" INNER TEE DUCT - 2 LAYERS REDUCED CLEARANCE - 22" STAINLESS STEEL OUTER SHELL.
P8 ASSEMBLED W/P7 D=S	DW18DWACCDORCOV-2R-S						26.16		1	DOUBLE WALL DUCT - 18" INNER ACCESS DOOR & 22" ACCESS DOOR COVER WITH CLAMPS - 2 LAYERS REDUCED CLEARANCE - 22" STAINLESS STEEL OUTER SHELL.
P9 ASSEMBLED W/P10	DW1835DWLTTP-2R-S	3400				-0.011	58.74	1924.01	1	DOUBLE WALL DUCT - 18" INNER DUCT, 35" LONG - 2 LAYERS REDUCED CLEARANCE - 22" STAINLESS STEEL OUTER SHELL - USED WITH TRANSITION PLATES
P10 ASSEMBLED W/P9	DW2618TPDBEX	3400					9.00	1924.01	1	DUCT TO CURB TRANSITION 3/4" DOWN TURN, 26 1/2" CURB TO 18" DUCT, 16 GA ALUMINIZED. USED ON NCA16FA / NCA16HPFA & NCA18FA / NCA18HPFA. TRANSITION PLATE OD IS 27.00" DESIGNED FOR USE WITH EXHAUST FAN. NON-STANDARD PART.
SYSTEM AT P10						-1.548	0.00			
P11	DW2226SADKIT						8.80		1	DUCT - HORIZONTAL SADDLE SUPPORT KIT, USED WITH 22" OD - INCLUDES UNI-STRUT CUT TO LENGTH, DW2226SAD, & HARDWARE BAG 4.
	3M-2000PLUS						0.80		3	DUCT - 3M FIRE BARRIER 2000 PLUS SILICONE - USED AS SEALANT TO SEAL DUCT JOINTS.
	DW18DWCLASY-2R-S						8.70		3	DUCT - 18" DUCT - 22" DOUBLE "V" CLAMP - 2R INSULATION & SINGLE "V" CLAMP INCLUDED - REDUCED CLEARANCE.
TOTAL WEIGHT							528.21			

- ALL DUCTWORK IS REQUIRED TO BE INSTALLED WITH THE MAXIMUM SUPPORT SPACING LISTED BELOW.
- FOR A COMPLETE LIST OF APPROVED SUPPORT METHODS, SEE THE ENTIRE INSTALLATION AND OPERATION MANUAL
- DUCTWORK SHALL SLOPE NOT LESS THAN 1/16" PER LINEAR FOOT TOWARDS THE HOOD OR AN APPROVED GREASE COLLECTION RESERVOIR.
- WHERE HORIZONTAL DUCTS EXCEED 75 FEET IN LENGTH, THE SLOPE SHALL NOT BE LESS THAN 3/16" PER LINEAR FOOT.

HORIZONTAL	
DUCT DIAMETER	SUPPORT SPACING (FT)
5'	7'
6'	7'
7'	7'
8'	7'
10'	7'
12'	7'
14'	7'
16'	7'
18'	5'
20'	5'
22'	5'
24'	5'
26'	5'
28'	5'
30'	5'
32'	5'
34'	5'
36'	5'

VERTICAL			
TYPE	WALL SUPPORT (FT)	CURB SUPPORT (FT)	FLOOR SUPPORT (FT)
2R & 2R HT (5'-16")	20'	24'	24'
2R (18")	18'	24'	24'
3R & 3Z (5'-24")	10'	24'	24'
3Z (26" -36")	10'	20'	20'

Ductwork is responsibility of
mechanical or general email reg83@captiveaire.com for pricing

NOTE: UNLESS OTHERWISE STATED, PANDA RESTAURANT GROUP SHALL PROVIDE ALL EQUIPMENT ON THE FOLLOWING CAPTIVEAIRE SHEETS, INCLUDING HOODS, FIRE SYSTEM, EXHAUST FANS, SUPPLY FAN, BATHROOM FAN AND ELECTRICAL INTERLOCK PACKAGE
DOUBLE WALL DUCT BY MECHANICAL PLEASE USE CONTACT BELOW FOR PRICING
ANSUL GAS VALVE:
THE ANSUL GAS VALVE IS PROVIDED BY CAPTIVEAIRE SYSTEMS. CONTACT OUR OFFICE WITH THE VALVE SIZE 3 DAYS IN ADVANCE, WHEN IT IS NEEDED ON SITE.
FOR QUESTIONS CALL THE CAPTIVEAIRE SOUTHERN CA NATIONAL ACCOUNTS OFFICE 3002 BOW AVENUE, SUITE 410 TUSTIN, CA 92780 TEL: 714-677-2963 EMAIL: REG83@CAPTIVEAIRE.COM

CAPTIVE

Southern CA National Accounts

3002 Dow Ave., Suite 410, Tustin, CA. 92780 PHONE: (714) 677-2983 EMAIL: reg83@captiveaire.com

www.captiveaire.com

REVISIONS

DESCRIPTION	DATE:
△	
△	
△	
△	
△	



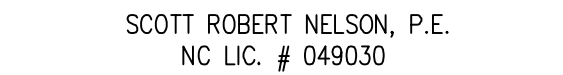




All ideas, designs, arrangement and plans indicated or represented by this drawing are the property of Panda Express Inc. and were created for use on this specific project. None of these ideas, designs, arrangements or plans may be used by or disclosed to any person, firm, or corporation without the written permission of Panda Express Inc.

CHECK SET	04-20-21
BID/PERMIT SET	06-01-21

PANDA PROJECT #:	D24956
PANDA STORE #:	TBD
ARCH PROJECT #:	239201



PANDA HOME 2600
450 Kannapolis Parkway
Concord, NC 28027

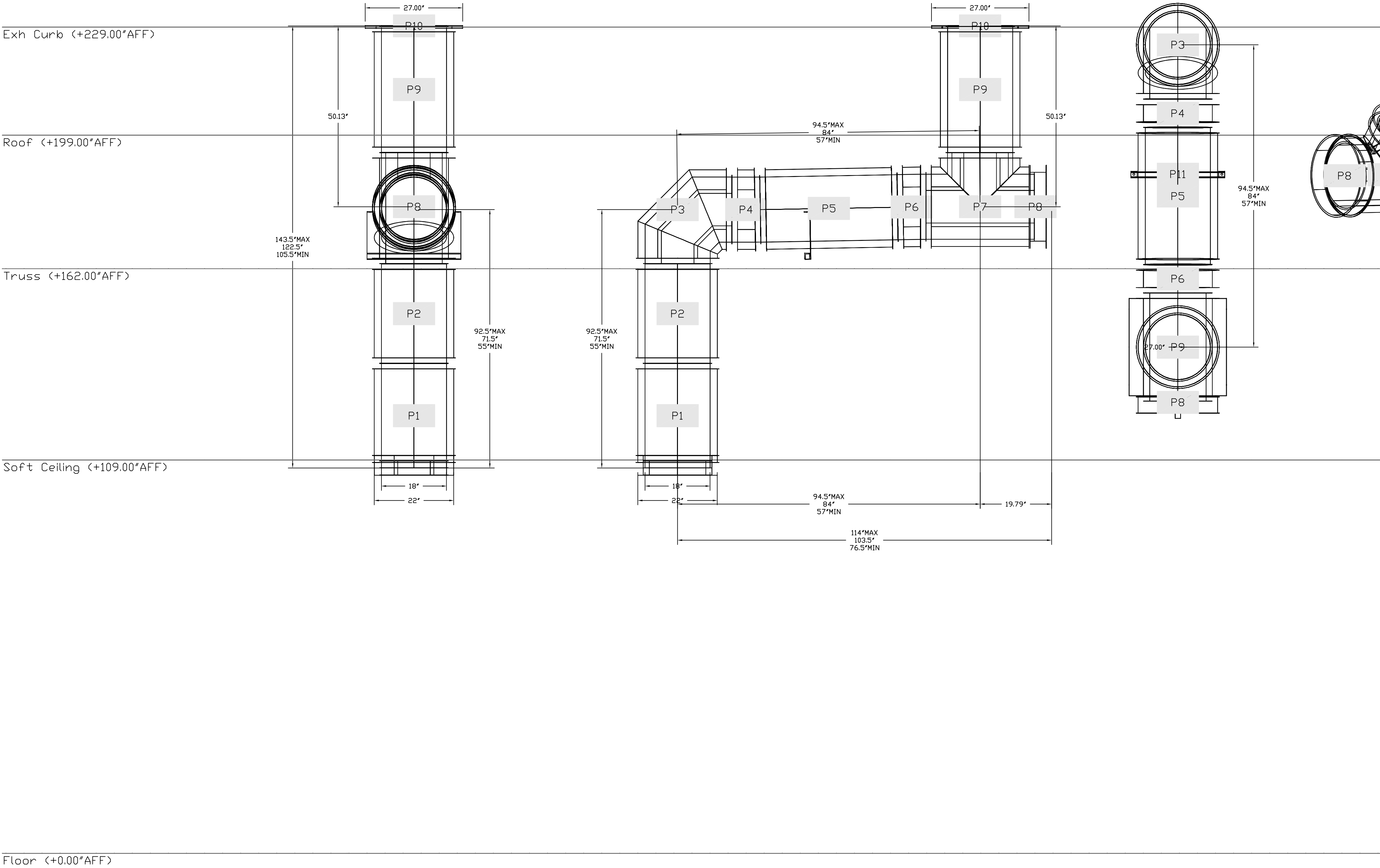
HOOD DETAIL PLAN

PANDA HOME 2600 R3

DUCTWORK #1 FRONT VIEW

DUCTWORK #1 SIDE VIEW

DUCTWORK #1 TOP VIEW DUCTWORK #1 SE VIEW



Ductwork is responsibility of
mechanical or general email reg83@captiveaire.com for pricing

REVISIONS

DESCRIPTION	DATE

Southern CA National Accounts

3002 Dow Ave., Suite 410, Tustin, CA 92780 PHONE: (714) 677-2963 EMAIL: reg83@captiveaire.com

Panda Express - Concord NC (D24956)

450 Kannapolis Parkway,
Concord, NC, 28027

NOTE: UNLESS OTHERWISE STATED, PANDA RESTAURANT GROUP SHALL PROVIDE ALL EQUIPMENT ON THE FOLLOWING CAPTIVEAIRE SHEETS, INCLUDING: HOODS, FIRE SYTEM, EXHAUST FANS, SUPPLY FAN, BATHROOM FAN AND ELECTRICAL INTERLOCK PACKAGE

DOUBLE WALL DUCT BY MECHANICAL PLEASE USE CONTACT BELOW FOR PRICING

ANSUL GAS VALVE:
THE ANSUL GAS VALVE IS PROVIDED BY CAPTIVEAIRE SYSTEMS. CONTACT OUR OFFICE WITH THE VALVE SIZE 3 DAYS IN ADVANCE OF WHEN IT IS NEEDED ON SITE.

FOR QUESTIONS CALL THE CAPTIVEAIRE SOUTHERN CA NATIONAL ACCOUNTS OFFICE
3002 DOW AVENUE, SUITE 410
TUSTIN, CA 92780
TEL: 714-677-2963 EMAIL: REG83@CAPTIVEAIRE.COM

DATE: 5/4/2023

DWG.#: 5986683

DRAWN BY: AH-83

SCALE: 3/4" = 1'-0"

MASTER DRAWING

SHEET NO. 10



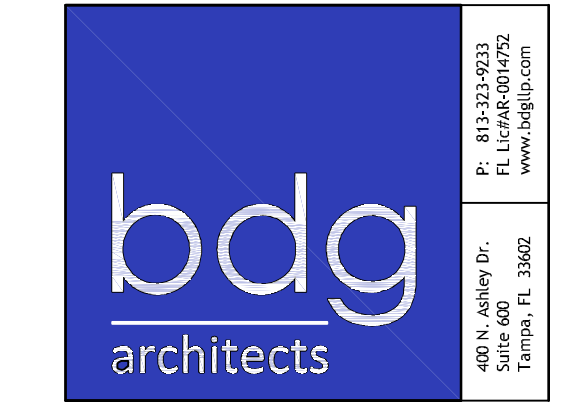
PANDA EXPRESS, INC.
1683 Walnut Grove Ave.
Rosemead, California
91770
Telephone: 626.799.9898
Facsimile: 626.372.8288

All ideas, designs, arrangement and plans indicated or represented by this drawing are the property of Panda Express Inc. and were created for use on this specific project. None of these ideas, designs, arrangements or plans may be used by or disclosed to any person, firm, or corporation without the written permission of Panda Express Inc.

REVISIONS:	
ISSUE DATE:	
CHECK SET	04-20-23
BID/PERMIT SET	06-01-23

DRAWN BY: BDG

PANDA PROJECT #: D24956
PANDA STORE #: TBD
ARCH PROJECT #: 239201



SCOTT ROBERT NELSON, P.E.
NC LIC. # 049030

PANDA EXPRESS
PANDA HOME 2600
450 Kannapolis Parkway
Concord, NC 28027

M-409

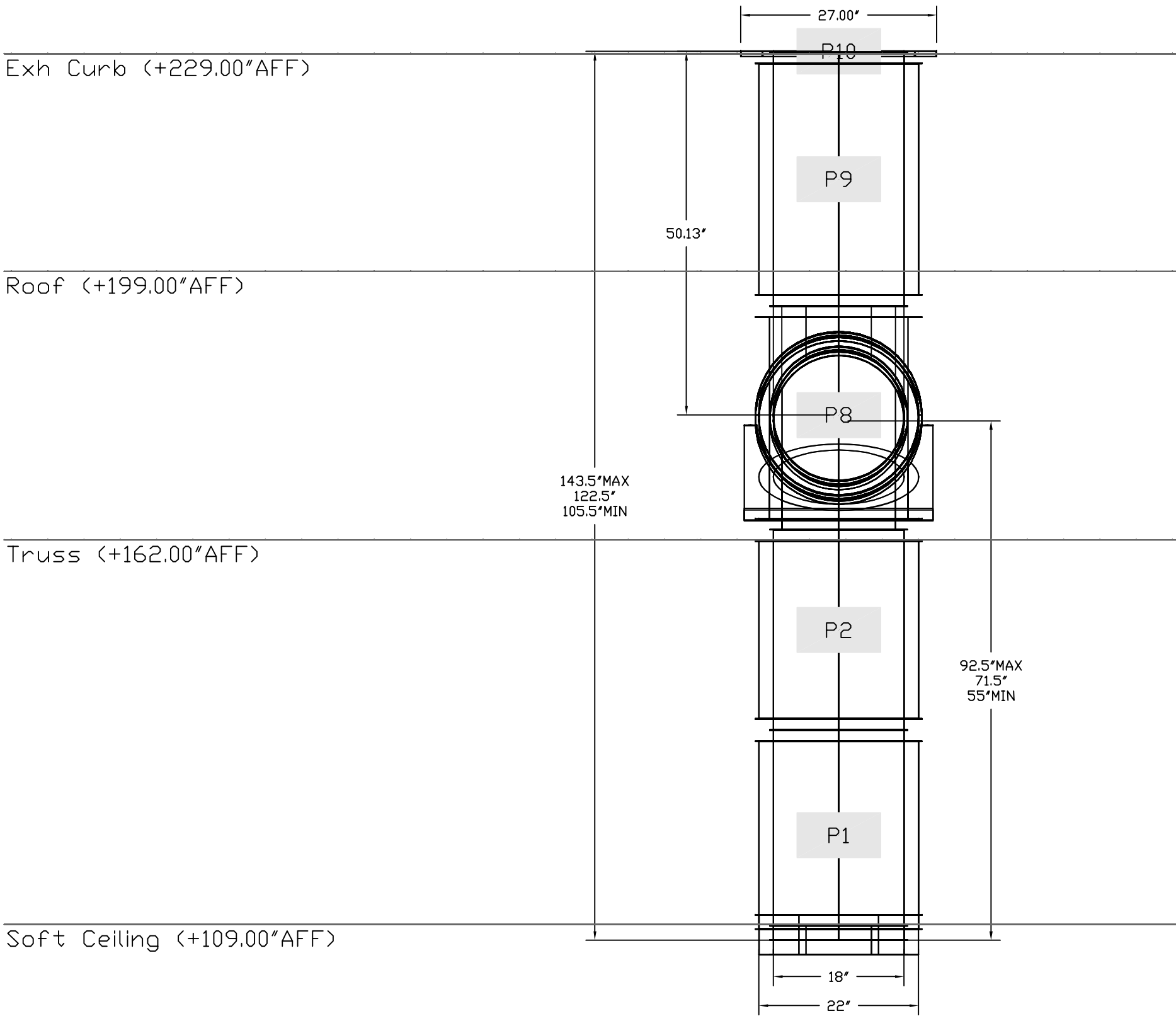
HOOD DETAIL PLAN

PANDA HOME 2600 R3

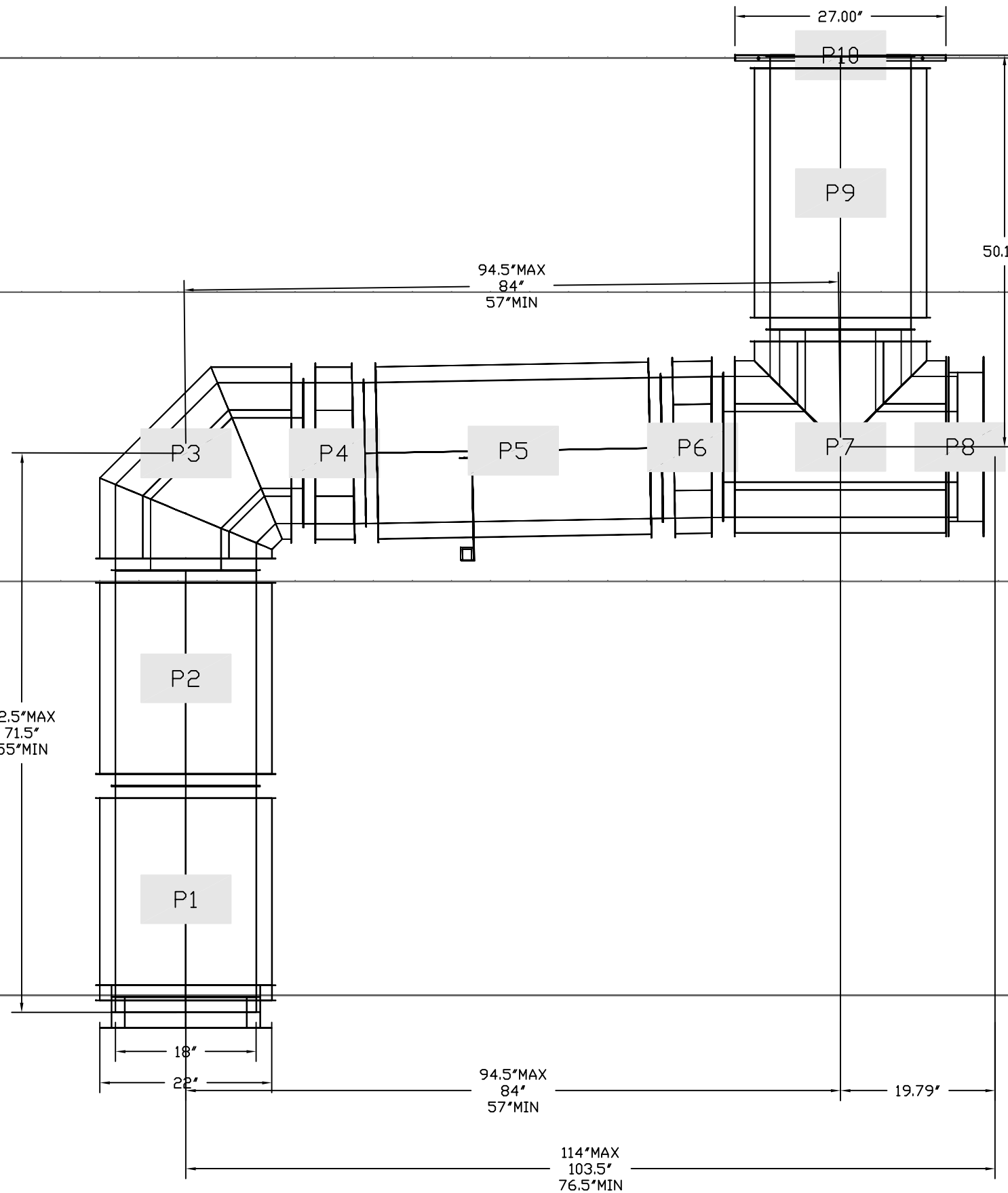
KPI
PROFESSIONAL ENGINEERS
"No matter the Scope, KPI has YOU Covered"
3303 QUEEN PALM DRIVE
TAMPA, FLORIDA 33619
PHONE (813) 241-6488
FAX (813) 241-6488
BOARD OF PROFESSIONAL ENGINEERS - LICENSE # C-4870

PRINTED 6/1/2023
THESE DRAWINGS AND PLANS, ANY REPRODUCTION THEREOF, AND ANY CAD OR ELECTRONIC FILE OF THESE DRAWINGS OR PLANS, ARE THE SOLE AND EXCLUSIVE PROPERTY OF BGD ARCHITECTS, P.A. AND MAY NOT BE REPRODUCED, PUBLISHED, MIMICED OR USED IN ANY MANNER WITHOUT THE EXPRESS WRITTEN PERMISSION OF BGD ARCHITECTS, P.A. USE OF THESE PLANS FOR CONSTRUCTION SHALL BE CONSIDERED ACCEPTANCE OF THE TERMS CONTAINED HEREIN AND THE LIABILITY AND CONSTRUCTION OF THE PLANS. THE PLANS SHALL NOT BE CALLED OR
AND SHALL BE THE FULL AND COMPLETE RELEASE OF BGD ARCHITECTS, P.A. FROM ANY LIABILITY, CLAIMS, OR DAMAGES INCLUDING TRINIS AND OMISSIONS ARISING OUT OF OR RELATED TO THE PLANS. ANY DISCREPANCIES OR CONFLICTS IN THE PLANS SHALL BE REFERRED IMMEDIATELY TO BGD ARCHITECTS FOR CLARIFICATION PRIOR TO CONTINUING WITH THE WORK. FAILURE TO REFER DISCREPANCIES OR CONFLICTS TO BGD ARCHITECTS SHALL BE AT THE USER'S SOLE RISK AND WITHOUT LIABILITY TO BGD ARCHITECTS, P.A.
KPI ENGINEERING, INC. PROFESSIONAL ENGINEERS
"No matter the Scope, KPI has YOU Covered!"
3303 QUEEN PALM DRIVE
TAMPA, FLORIDA 33619
PHONE: (813) 241-6488
FAX: (813) 241-6488
BOARD OF PROFESSIONAL ENGINEERS - LICENSE # C-4470

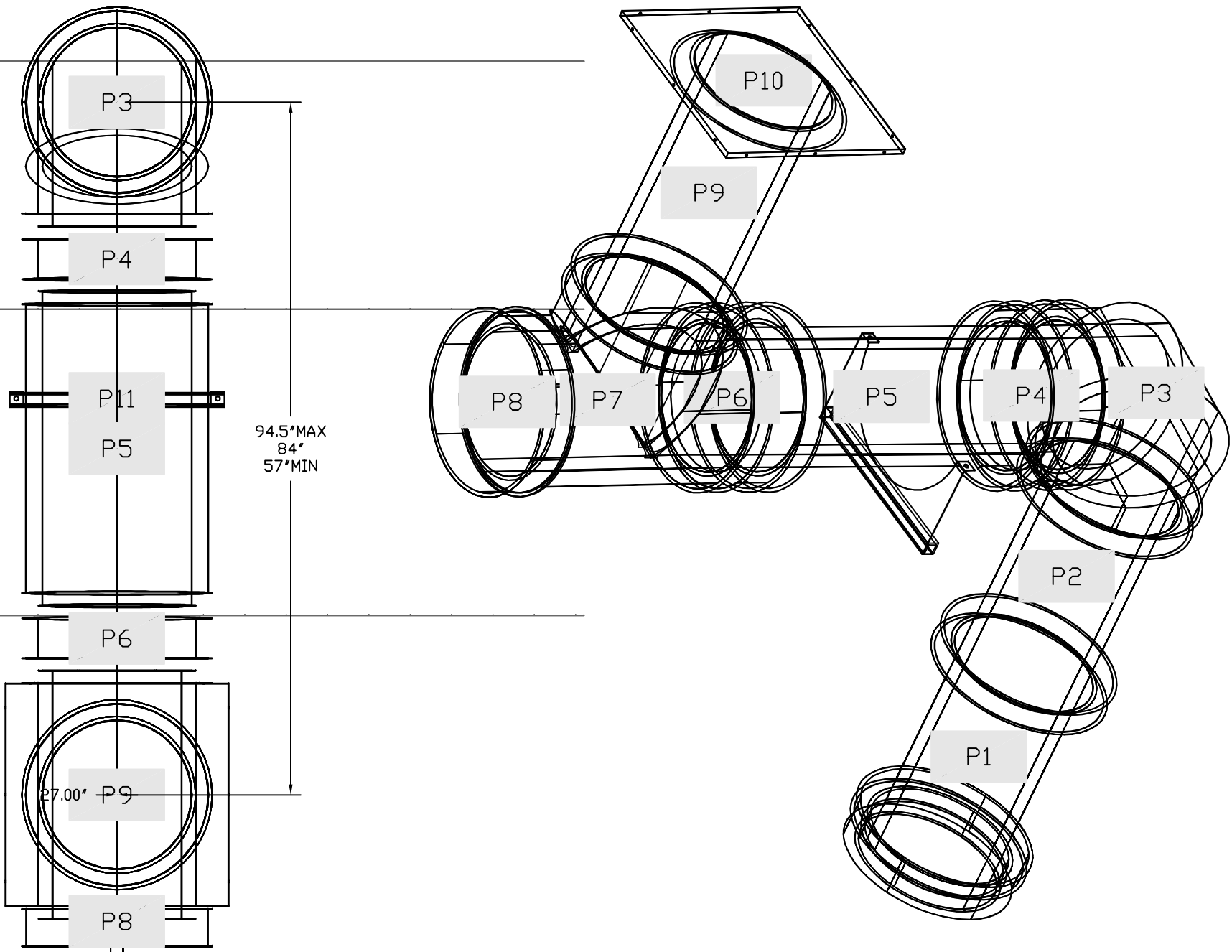
DUCTWORK #2 FRONT VIEW



DUCTWORK #2 SIDE VIEW



DUCTWORK #2 TOP VIEW DUCTWORK #2 SE VIEW



Floor (+0.00'AFF)

Ductwork is responsibility of
mechanical or general email reg83@captiveaire.com for pricing

NOTE: UNLESS OTHERWISE STATED, PANDA RESTAURANT GROUP SHALL PROVIDE ALL EQUIPMENT ON THE FOLLOWING CAPTIVEAIRE SHEETS, INCLUDING: HOODS, FIRE SYTEM, EXHAUST FANS, SUPPLY FAN, BATHROOM FAN AND ELECTRICAL INTERLOCK PACKAGE

DOUBLE WALL DUCT BY MECHANICAL PLEASE USE CONTACT BELOW FOR PRICING

ANSUL GAS VALVE:

THE ANSUL GAS VALVE IS PROVIDED BY CAPTIVEAIRE SYSTEMS. CONTACT OUR OFFICE WITH THE VALVE SIZE 3 DAYS IN ADVANCE OF WHEN IT IS NEEDED ON SITE.

FOR QUESTIONS CALL THE CAPTIVEAIRE SOUTHERN CA NATIONAL ACCOUNTS OFFICE

3002 DOW AVENUE, SUITE 410
TUSTIN, CA 92780
TEL: 714-677-2963 EMAIL: REG83@CAPTIVEAIRE.COM

KPI ENGINEERING, INC.
PROFESSIONAL ENGINEERS
"No matter the Scope, KPI has YOU Covered!"
3303 QUEEN PALM DRIVE
TAMPA, FLORIDA 33619
PHONE: (813) 241-6488
FAX: (813) 241-6488
BOARD OF PROFESSIONAL ENGINEERS - LICENSE # C-4470

REVISIONS	
DESCRIPTION	DATE

CAPTIVEAIRE

Southern CA National Accounts

3002 Dow Ave., Suite 410, Tustin, CA 92780 PHONE: (714) 677-2963 EMAIL: reg83@captiveaire.com

Panda Express - Concord NC (D24956)
450 Kannapolis Parkway,
Concord, NC, 28027

DATE: 5/4/2023

DWG.#: 5986683

DRAWN BY: AH-83

SCALE: 3/4" = 1'-0"

MASTER DRAWING

SHEET NO. 12



PANDA EXPRESS, INC.
1683 Walnut Grove Ave.
Rosemead, California
91770
Telephone: 626.799.9898
Facsimile: 626.372.8288

All ideas, designs, arrangement and plans indicated or represented by this drawing are the property of Panda Express Inc. and were created for use on this specific project. None of these ideas, designs, arrangements or plans may be used by or disclosed to any person, firm, or corporation without the written permission of Panda Express Inc.

REVISIONS:	
ISSUE DATE:	
CHECK SET	04-20-23
BID/PERMIT SET	06-01-23

DRAWN BY: BDG

PANDA PROJECT #: D24956
PANDA STORE #: TBD
ARCH PROJECT #: 239201



SCOTT ROBERT NELSON, P.E.
NC LIC. # 049030


PANDA EXPRESS
PANDA HOME 2600
450 Kannapolis Parkway
Concord, NC 28027

M-411

HOOD DETAIL PLAN

PANDA HOME 2600 R3





COMcheck Software Version COMcheckWeb

Mechanical Compliance Certificate

Project Information

Energy Code: 2018 IECC

Project Title: 231032 Panda Express (Concord, NC)

Location: Concord (Cabarrus), North Carolina

Climate Zone: 3a

Project Type: New Construction

Construction Site:
450 Kannapolis Parkway
Concord, North Carolina 28027

Owner/Agent:
Panda Express Chinese Kitchen
Rosemead, California 91770

Designer/Contractor:
KPI Engineering, Inc.
3203 Queen Palm Rd
Tampa, Florida 33619

Additional Efficiency Package(s)

Credits: 1.0 Required 1.0 Proposed
High Performance HVAC, 1.0 credit

Mechanical Systems List

Quantity System Type & Description

- 1 RTU1 (Single Zone)
 Heating: 1 each - Central Furnace, Gas, Capacity = 90 kBTU/h
 Proposed Efficiency = 90.00% Et, Required Efficiency: 88.00 % Et, or 88% AFUE
 Cooling: 1 each - Single Package DX Unit, Capacity = 66 kBTU/h, Air-Cooled Condenser, Air Economizer
 Proposed Efficiency = 16.00 EER, Required Efficiency = 12.10 EER
 Proposed Part Load Efficiency = 16.00 IEER, Required Part Load Efficiency = 13.90 IEER
 Fan System: RTU1 | Kitchen/Restrooms -- Compliance (Motor nameplate HP and fan efficiency method) : Passes

 Fans:
 FAN 1 Supply, Constant Volume, 2170 CFM, 1.8 motor nameplate hp, 90.0 fan efficiency grade, 0.9 total fan efficiency, 0.9 design fan efficiency - fan exception: Single fan <= SHP

- 1 RTU2 (Single Zone)
 Heating: 1 each - Central Furnace, Gas, Capacity = 120 kBTU/h
 Proposed Efficiency = 92.00% Et, Required Efficiency: 88.00 % Et, or 88% AFUE
 Cooling: 1 each - Single Package DX Unit, Capacity = 104 kBTU/h, Air-Cooled Condenser, Air Economizer
 Proposed Efficiency = 13.80 EER, Required Efficiency = 12.10 EER
 Proposed Part Load Efficiency = 13.80 IEER, Required Part Load Efficiency = 13.90 IEER
 Fan System: RTU2 | Dining -- Compliance (Motor nameplate HP and fan efficiency method) : Passes

 Fans:
 FAN 2 Supply, Constant Volume, 3400 CFM, 3.0 motor nameplate hp, 90.0 fan efficiency grade, 0.9 total fan efficiency, 0.9 design fan efficiency - fan exception: Single fan <= SHP

- 1 RTU3 (Single Zone)
 Heating: 1 each - Central Furnace, Gas, Capacity = 130 kBTU/h
 Proposed Efficiency = 92.00% Et, Required Efficiency: 88.00 % Et, or 88% AFUE
 Cooling: 1 each - Single Package DX Unit, Capacity = 113 kBTU/h, Air-Cooled Condenser, Air Economizer
 Proposed Efficiency = 13.80 EER, Required Efficiency = 12.10 EER
 Proposed Part Load Efficiency = 13.80 IEER, Required Part Load Efficiency = 13.90 IEER
 Fan System: RTU3 | Kitchen/Dining -- Compliance (Motor nameplate HP and fan efficiency method) : Passes

 Fans:
 FAN 3 Supply, Constant Volume, 3900 CFM, 4.2 motor nameplate hp, 90.0 fan efficiency grade, 0.9 total fan efficiency, 0.9 design fan efficiency - fan exception: Single fan <= SHP

- 2 WH1 & WH2:
 Gas Instantaneous Water Heater, Capacity: 1 gallons, Input Rating: 199 kBTU/h
 No minimum efficiency requirement applies

Project Title: 231032 Panda Express (Concord, NC)

Data filename:

Report date: 03/13/23

Page 1

Mechanical Compliance Statement

Compliance Statement: The proposed mechanical design represented in this document is consistent with the building plans, specifications, and other calculations submitted with this permit application. The proposed mechanical systems have been designed to meet the 2018 IECC requirements in COMcheck Version COMcheckWeb and to comply with any applicable mandatory requirements listed in the Inspection Checklist.

Project Title: 231032 Panda Express (Concord, NC) Report date: 03/13/23
Data filename: Page 2