

CORNER RECORDAPN No. 426 - 150 - 10 - (Optional)

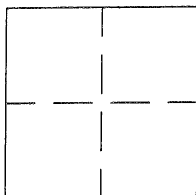
Document Number

CR 2767

CASTRO VALLEY - UNINCORPORATED

County of ALAMEDA

, California

Brief Legal Description MONUMENT ON BECKHAM WAY BETWEEN HOUSE 2224 AND HOUSE 2225.**CORNER TYPE**

Government Corner ☐ Control ☐
 Meander ☐ Property ☐
 Rancho ☐ Other ☒
 Date of Survey JULY 14, 2005

COORDINATES
(Optional)

N. _____
 E. _____
 Zone _____ Datum _____
 Elev. _____

Corner - Left as found ☒ Found and tagged ☐ Established ☐ Reestablished ☐ Rebuilt ☐

In compliance with Section 8771 of the Professional Land Surveyors' Act, this corner record is being filed to ESTABLISH X / REESTABLISH _____ the position of an existing monument PRIOR X / SUBSEQUENT _____ to street or highway reconstruction. (Use this portion only when applicable.)

Identification and type of corner found: Evidence used to identify or procedure used to establish or reestablish the corner: THE MONUMENT DESCRIBED BELOW WAS REFERENCED BY CUT CROSSES SET ON THE CONCRETE SIDEWALK OF BECKHAM WAY NEAR HOUSES 2224, 2225, 2228, AND 2229. SEE DRAWING NEXT PAGE.

A description of the physical condition of the monument as found and as set or reset: FOUND ALAMEDA COUNTY MONUMENT WITH PIN IN CONCRETE POST IN GOOD CONDITION ON BECKHAM WAY. THIS MOUNUMENT IS IN DANGER OF BEING DESTROYED DUE TO ROAD CONSTRUCTION.

SURVEYOR'S STATEMENT

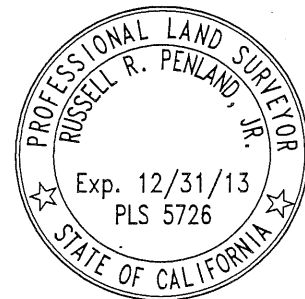
This Corner Record was prepared by me or under my direction in conformance with the Land Surveyors' Act on August 24, 2006.

Signed Robert A. Machado (L.S.) or R.C.E. Number 7380

**COUNTY SURVEYOR'S STATEMENT**

This Corner Record was received September 6, 2006 and examined and filed 10-13 2013.

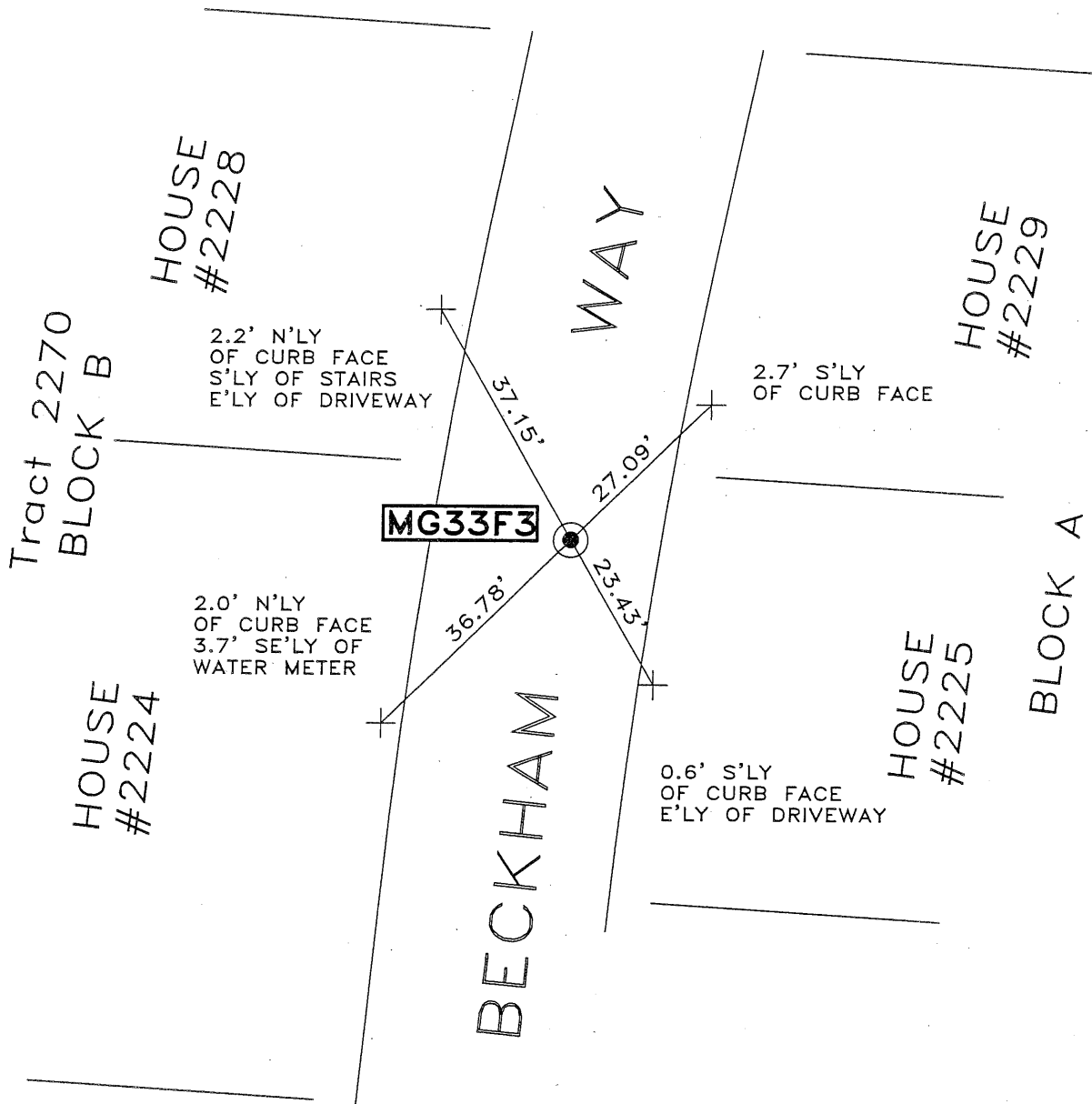
Signed Russell R. Penland, Jr. Title County Surveyor



County Surveyor's Comment _____



REFERENCE: ALAMEDA COUNTY MAP,
TRACT; 2270, 44M87



LEGEND:

● FOUND WELL MONUMENT PIN IN CONCRETE

+ SET CUT CROSS

AA###A# ALAMEDA COUNTY MONUMENT ID