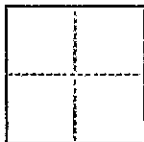


CR 64

## CORNER RECORD

COUNTY OF ALAMEDA T. 3S R. 2W MT. DIABLO MERIDIAN CALIFORNIACORNER TYPE: GOV'T. CORNER ☐ MEANDER ☐ RANCHO ☐ CONTROL ☐ OTHER ☒CORNER IDENTIFICATION — DATE OF VISIT 1-21 1988CORNER — LEFT AS FOUND ☒ FOUND AND TAGGED ☐ REESTABLISHED OBLITERATED CORNER ☐ REBUILT ☐

PHYSICAL DESCRIPTION OF CORNER FOUND; EVIDENCE AND METHOD USED TO IDENTIFY OR REESTABLISH

SEE SKETCH BELOW

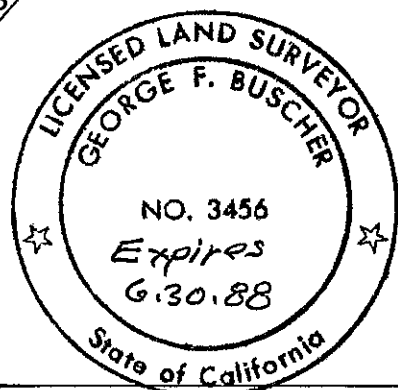
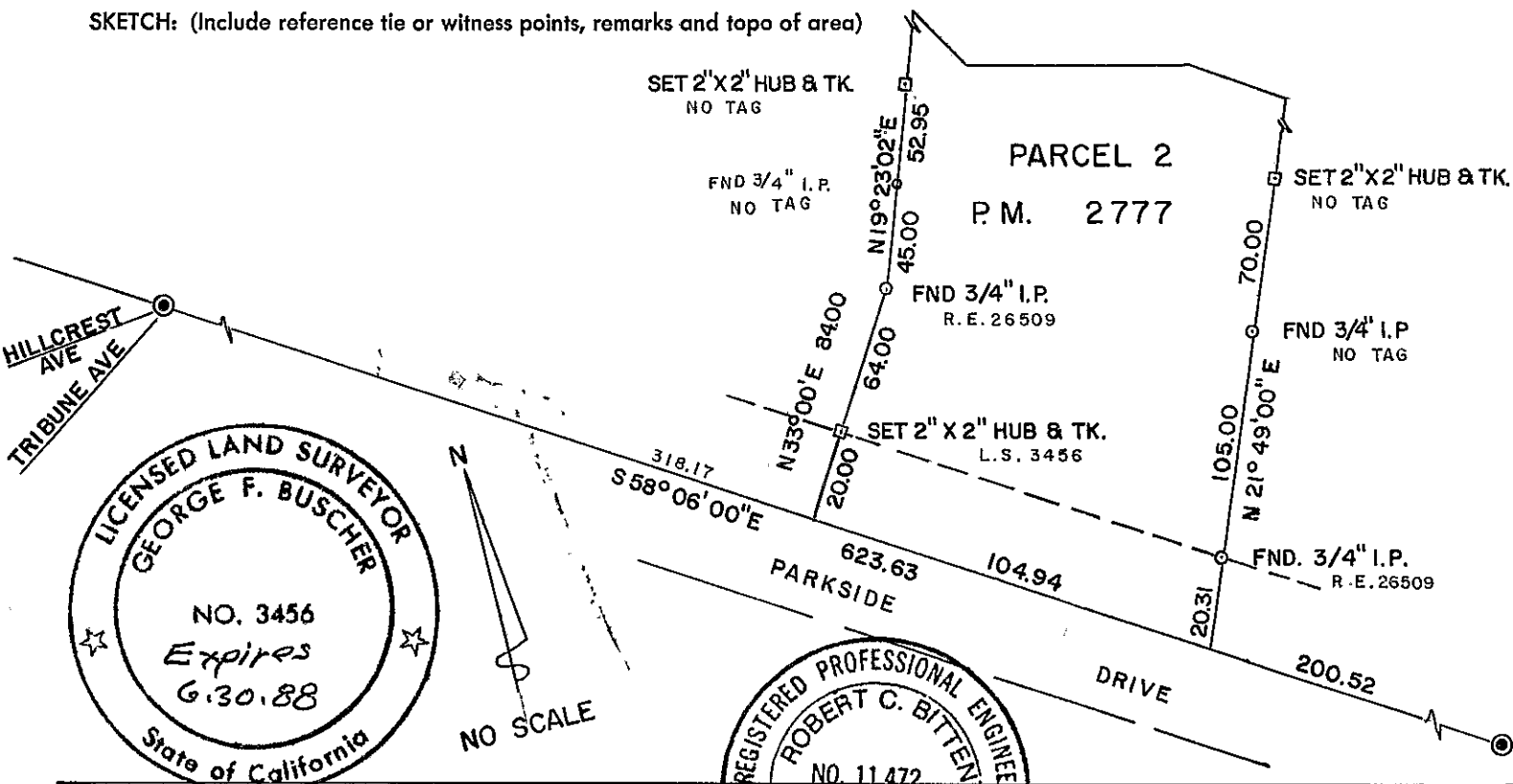
PHYSICAL DESCRIPTION OF MONUMENTS REBUILT OR PERPETUATED

FOUND MONUMENTS AND PROPERTY CORNERS AS DESCRIBED ON P.M. 2777, III MAPS 41, AND SET CORNERS AS SHOW IN SKETCH BELOW.

CALIFORNIA COORDINATE SYSTEM ORDER: FIRST ☐ SECOND ☐ THIRD ☐ SCALED FROM USGS MAPSTATIONS USED: NGS (USC & GS) ☐ STATE ☐ COUNTY ☐ OTHER ☐ STATION                      STATION                     ZONE 3 ELEVATION 670 ± NORTHINGS (Y) 425,800 ± EASTINGS (X) 1,553,400 ±

(Fold)

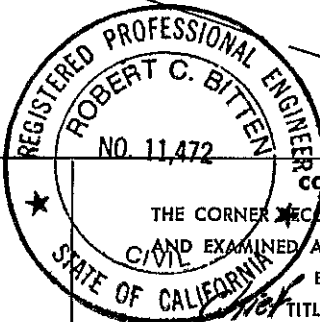
SKETCH: (Include reference tie or witness points, remarks and topo of area)



## SURVEYOR'S CERTIFICATE

THIS CORNER RECORD WAS PREPARED BY ME OR UNDER MY DIRECTION IN CONFORMANCE WITH THE LAND SURVEYORS ACT ON Jan 27 1988SIGNED: G. F. BuscherL.S. or R.C.E. No.: L.S. 3456

SEAL



## COUNTY SURVEYOR'S CERTIFICATE

THE CORNER RECORD WAS RECEIVED 1-27 1988 AND EXAMINED AND FILED 1-13 1988BY: Robert C. Bitten TITLE: Deputy County SurveyorDOCUMENT No. 88-11

STATEMENT ON BACK OF SHEET

YES ☐ NO ☒

Bk. 1 C.R. Pg. 64