

FURNITURE SCHEDULE

Item Code	Type	Material		L x W x H	
T-A1a	LIVE EDGE 4'-0"	OAK	PANDA VENDOR	4'-0" L X 28" W X 2" THICK	
T-A1b	LIVE EDGE 8'-0"	OAK	PANDA VENDOR	8'-0" L X 28" W X 2" THICK	
T-A1c	LIVE EDGE 8'-0"	OAK	PANDA VENDOR	8'-0" L X 28" W X 2" THICK	
T-A1d	LIVE EDGE 10'-0"	OAK	PANDA VENDOR	10'-0" L X 28" W X 2" THICK	
T-B1a	2 TOP TABLE	QUARTZ - TETON BEIGE	PANDA VENDOR	21" L X 24" W	
T-B1b	4 TOP TABLE	QUARTZ - TETON BEIGE	PANDA VENDOR	24" L X 48" W	
T-B1c	4 TOP TABLE ADA	QUARTZ - TETON BEIGE	PANDA VENDOR	30" L X 48" W	
T-B2a	ROUND TABLE 42"	QUARTZ	PANDA VENDOR	42" DIAMETER	
T-C1a	2 TOP SEATEE	LAMINATE W/ METAL EDGE OILED OAK	PANDA VENDOR	21" L X 24" W X 30.25" H	
T-C1b	4 TOP SEATEE	LAMINATE W/ METAL EDGE OILED OAK	PANDA VENDOR	48" L X 24" W X 30.25" H	
T-C2a	ROUND TABLE 24" DIA	LAMINATE W/ METAL EDGE OILED OAK	PANDA VENDOR	24" DIAMETER	
T-C2b	ROUND TABLE 30" DIA	LAMINATE W/ METAL EDGE OILED OAK	PANDA VENDOR	30" DIAMETER	

C-A1a	SINGLE BOOTH-41"	OAK W/ EVOLUTION SEDIMENT FABRIC	PANDA VENDOR	41" L X 34 1/8" H	
C-A1b	SINGLE BOOTH-47"	OAK W/ EVOLUTION SEDIMENT FABRIC	PANDA VENDOR	47" L X 34 1/8" H	
C-A1c	SINGLE BOOTH-59"	OAK W/ EVOLUTION SEDIMENT FABRIC	PANDA VENDOR	59" L X 34 1/8" H	
C-A1d	BOOTH BACK TO BACK-47"	OAK W/ EVOLUTION SEDIMENT FABRIC	PANDA VENDOR	47" L X 34 1/8" H	
C-A1e	BOOTH BACK TO BACK-41"	OAK W/ EVOLUTION SEDIMENT FABRIC	PANDA VENDOR	41" L X 34 1/8" H	
C-A1f	BOOTH BACK TO BACK-59"	OAK W/ EVOLUTION SEDIMENT FABRIC	PANDA VENDOR	59" L X 34 1/8" H	

B-S1a	I-BEAM BASE 34" H	HOT ROLL STEEL W/ LOW GLOSS CLEAR COAT	PANDA VENDOR	FOR 34" H TABLE	
B-S2a	3" FREE STANDING CRISS CROSS		PANDA VENDOR	FOR 30" ROUND TABLE	
B-S2b	3" FREE STANDING CRISS CROSS		PANDA VENDOR	FOR 21" X 24" TABLE	
B-S3a	3" BOLT DOWN		PANDA VENDOR	FOR 30" H TABLE	
B-S4a	3" CORE DRILL		PANDA VENDOR	FOR 30" H TABLE	
B-S5a	SIT DOWN BASE		PANDA VENDOR	FOR 34" H LEDGE TABLE	
B-B1	SPECIAL BRACKETS		PANDA VENDOR	FOR MODESTY PANEL	

F-A1	TRASH BIN	TETON BEIGE / OILED OAK	PANDA VENDOR	20" L X 22" W	
F-A2a	TRASH BIN W/ LEFT BROOM HOLDER	TETON BEIGE / OILED OAK	PANDA VENDOR	20" L X 27" W	
F-A2b	TRASH BIN W/ RIGHT BROOM HOLDER	TETON BEIGE / OILED OAK	PANDA VENDOR	20" L X 27" W	
F-B1	TRASH LINER W/ CASTERS	OILED OAK	PANDA VENDOR		
F-C1a	LEFT BROOM HOLDER	OILED OAK	PANDA VENDOR		
F-C1b	RIGHT BROOM HOLDER	OILED OAK	PANDA VENDOR		

TL-A5a	LOW WALL 3'-6"	OILED OAK HORIZONTAL GRAIN	PANDA VENDOR	3'-6" L X 34 1/8" H	
TL-A5b	LOW WALL 8'-0"	OILED OAK HORIZONTAL GRAIN	PANDA VENDOR	8'-0" L X 34 1/8" H	
DS-1	FREE STANDING SHELF	WOOD SHELF W/ METAL FRAME	PANDA VENDOR	2'-10" L X 12" W 66" H	

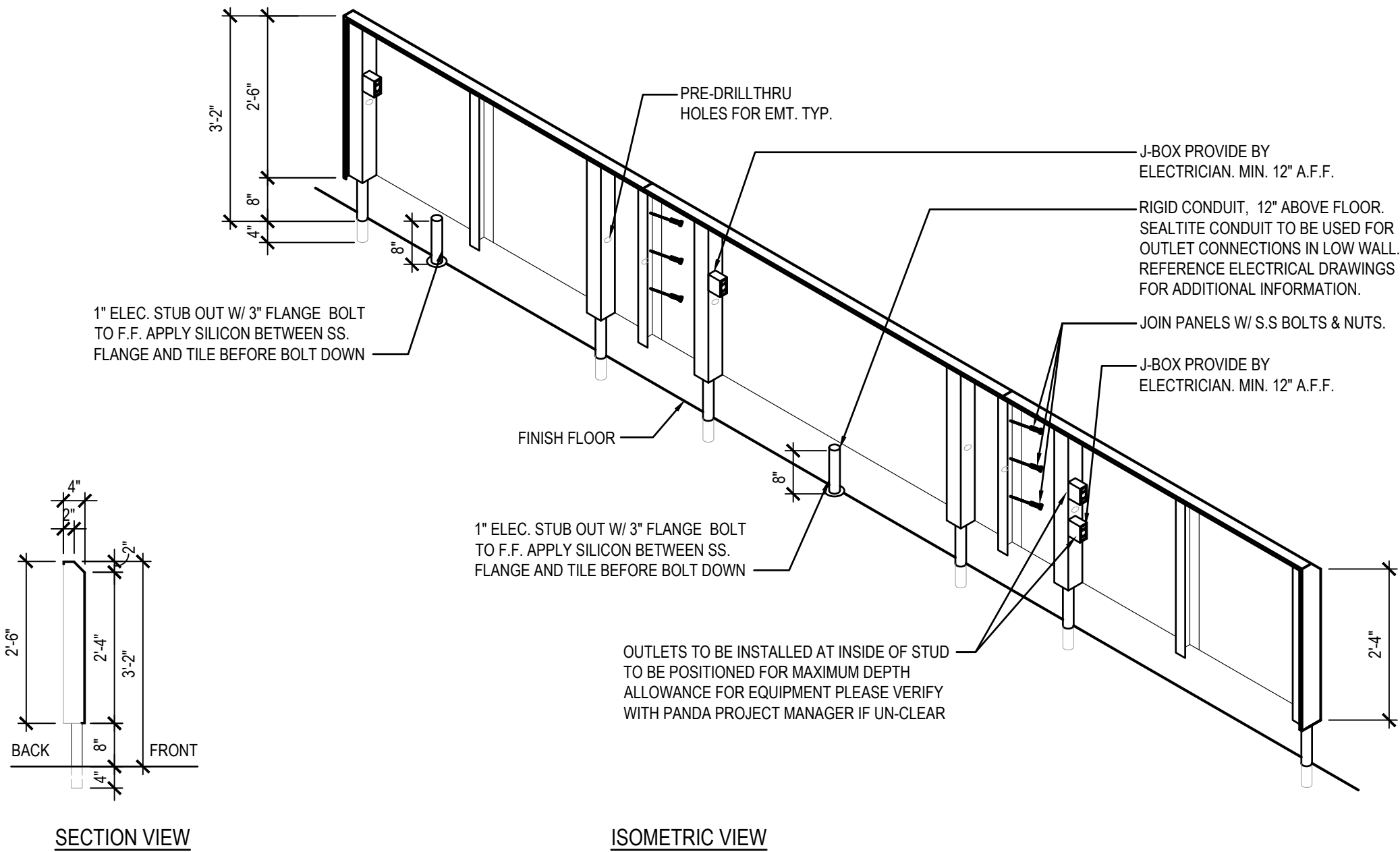
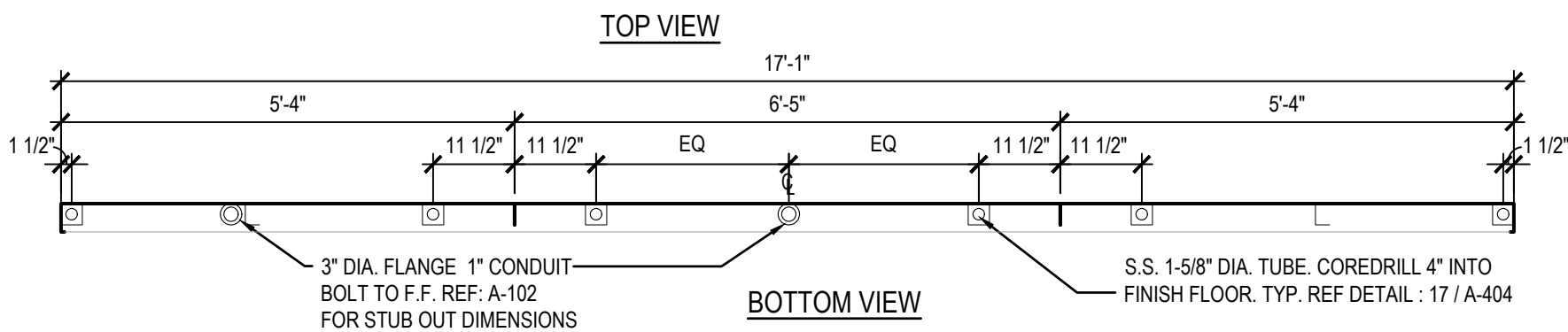
CHAIR SCHEDULE

Item Code	Type	Material		L x W x H	
WALNUT PALLET					
C-1a	YARDBIRD DINING CHAIR	OAK	PANDA VENDOR	18" H	
C-2a	CHOM CHOM COUNTER STOOL	OAK	PANDA VENDOR	22" H	
OAK PALLET					
C-1a1	PANDA DINING CHAIR W/ BACK	OAK	PANDA VENDOR	18" H	
C-2a	PANDA COUNTER STOOL-NO BACK	OAK (PREFERRED STOOL)	PANDA VENDOR	22" H	
C-2a	PANDA COUNTER STOOL W/ BACK	OAK (OPTIONAL)	PANDA VENDOR	22" H	

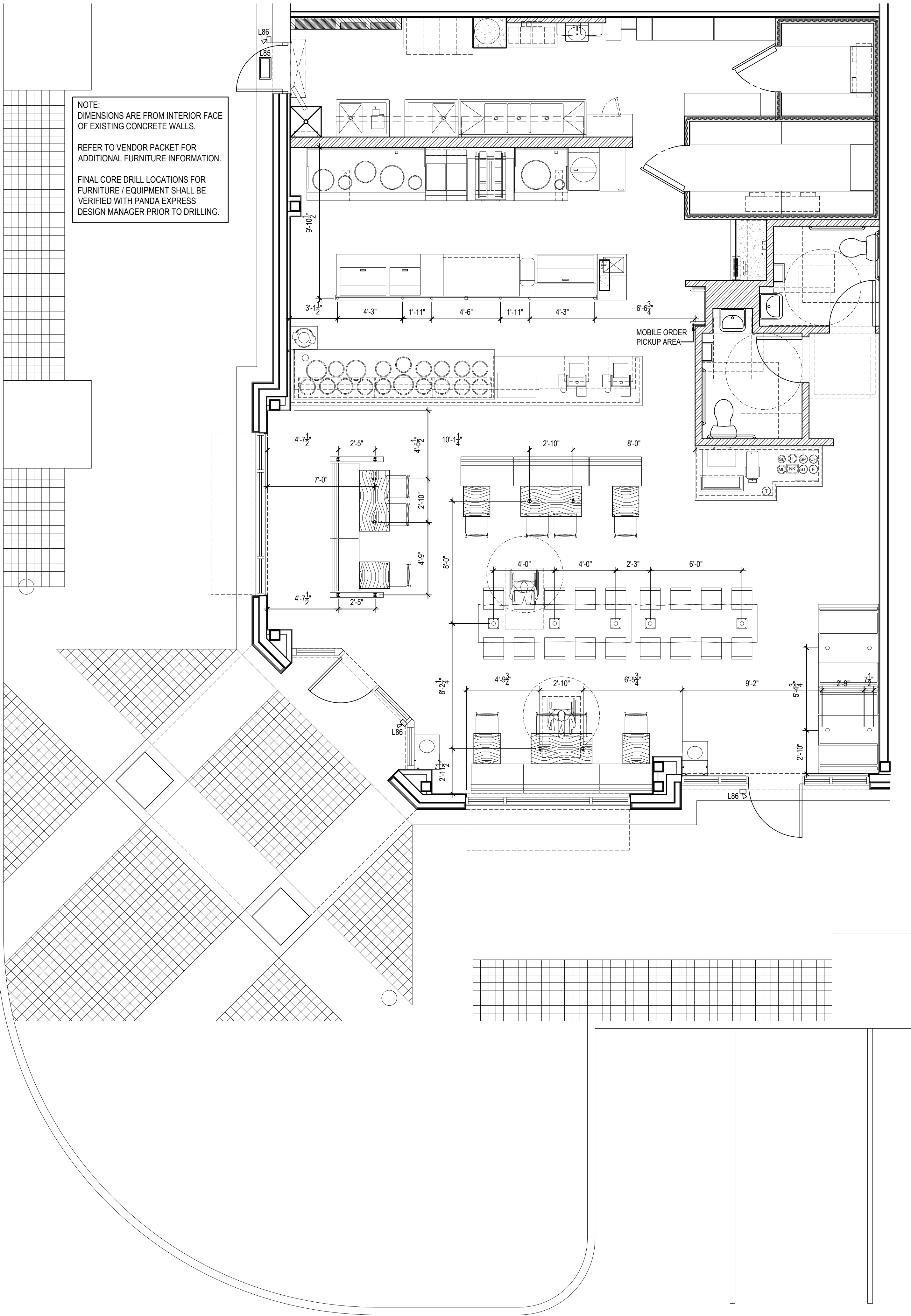
OUTDOOR FURNITURE & ARCH. ELEMENTS

OC-1	OUTDOOR CHAIR		PANDA VENDOR	22-7/8" x 22-1/2" x 25-3/8" / (17-3/8")	
OT-1	4 TOP OUTDOOR TABLE		PANDA VENDOR	48" x 24" x 30"	
OT-2	4 TOP OUTDOOR TABLE (ADA)		PANDA VENDOR	48" x 24" x 30"	
OW-1	OUTDOOR WASTE BIN		PANDA VENDOR	23" x 23-1/4" x 44-5/8"	

NOTE:  
PANDA TEAM TO SELECT CHAIR PALLET WITH MANUFACTURER



NOTE:  
DIMENSIONS ARE FROM INTERIOR FACE OF EXISTING CONCRETE WALLS.  
REFER TO VENDOR PACKET FOR ADDITIONAL FURNITURE INFORMATION.  
FINAL CORE DRILL LOCATIONS FOR FURNITURE / EQUIPMENT SHALL BE VERIFIED WITH PANDA EXPRESS DESIGN MANAGER PRIOR TO DRILLING.



PANDA RESTAURANT GROUP INC.  
1683 Walnut Grove Ave.  
Rosemead, California  
91770  
Telephone: 626.799.9898  
Facsimile: 626.372.8288

All ideas, designs, arrangement and plans indicated or represented by this drawing are the property of Panda Express Inc. and were created for use on this specific project. None of these ideas, designs, arrangements or plans may be used by or disclosed to any person, firm, or corporation without the written permission of Panda Express Inc.

REVISIONS:


ISSUE DATE:

1	CHECK SET	10-23-20
2	PERMIT SET	03-15-21
3	BID SET	04-02-21

DRAWN BY: JO

PANDA PROJECT #: S4-21-D7864  
ARCH PROJECT #: P7350

www.cphcorp.com  
A Full Service  
A & E Firm

Plans Prepared By  
**CPI Design, Inc.**  
500 West Fulton St.  
Sanford, FL 32771  
Ph: 407.322.6841  
State of Virginia License:  
Engineer No. 407006317  
Surveyor No. N/A  
Architect No. 407006317  
Landscape No. 407006317

PANDA EXPRESS  
END CAP - TENANT BUILD OUT  
4501 S LABURNUM AVE  
RICHMOND VA, 23231

A-109  
FURNITURE PLAN