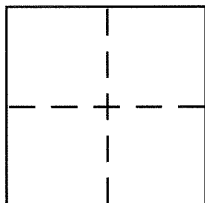


**CORNER RECORD**Document Number CR 6248City of BERKELEYCounty of ALAMEDA, CaliforniaBrief Legal Description CITY OF BERKELEY MONUMENT B0829**CORNER TYPE**

Government Corner ☐ Control ☒  
 Meander ☐ Property ☐  
 Rancho ☐ Other ☐  
 Date of Survey APRIL 16, 2014

**COORDINATES (Optional)**

N. \_\_\_\_\_  
 E. \_\_\_\_\_  
 Zone \_\_\_\_\_ NAD27 ☐ NAD83 ☐  
 NAD83 Epoch \_\_\_\_\_  
 Elev. \_\_\_\_\_  
 Vert. Datum: NGVD29 ☐ NAVD88 ☐  
 Meas. Units: Metric ☐ Imperial ☐

Corner – Left as found ☒ Found and tagged ☐ Established ☐ Reestablished ☐ Rebuilt ☐

Identification and type of corner found: Evidence used to identify or procedure used to establish or reestablish the corner:  
**IN COMPLIANCE WITH SECTION 8771 OF THE PROFESSIONAL LAND SURVEYORS' ACT, THIS CORNER  
 RECORD IS BEING FILED TO ESTABLISH THE POSITION OF AN EXISTING MONUMENT PRIOR TO STREET  
 RECONSTRUCTION. (SEE PAGE 2)**

A description of the physical condition of the monument as found and as set or reset:  
**CITY OF BERKELEY STANDARD WELL-TYPE MONUMENT, FOUND IN GOOD CONDITION. (SEE PAGE 2)**

**SURVEYOR'S STATEMENT**

This Corner Record was prepared by me or under my direction in conformance with  
 the Land Surveyor's Act on APRIL 29, 2014

Signed [Signature] P.L.S. or R.C.E. No. 5003

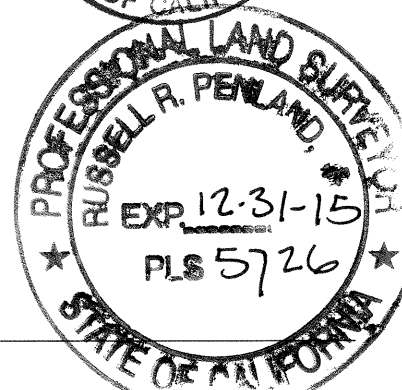
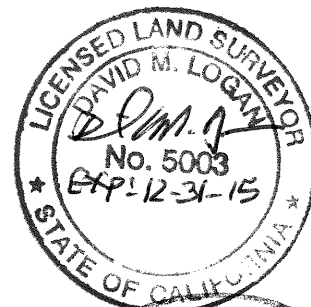
**COUNTY SURVEYOR'S STATEMENT**

This Corner Record was received 5-20-2014  
 and examined and filed 6-16-2014

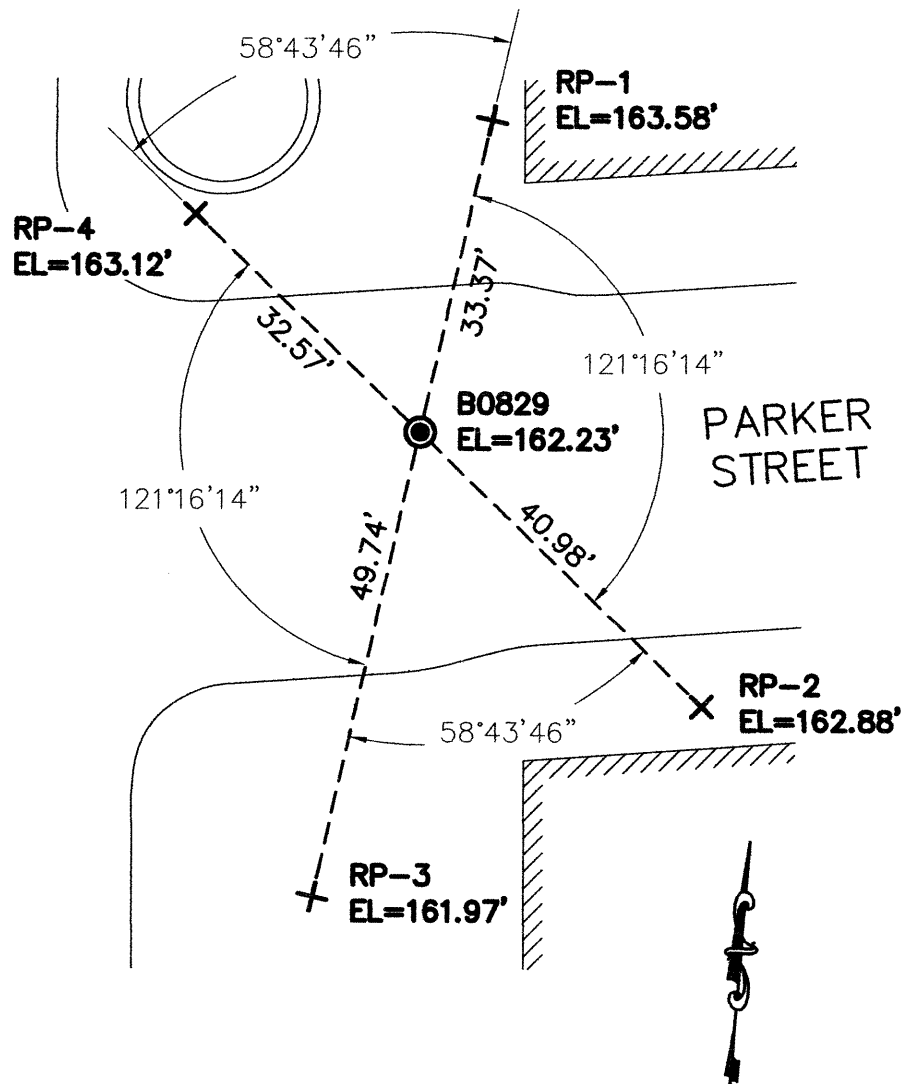
Signed [Signature] P.L.S. or R.C.E. No. 5726

Title County Surveyor

County Surveyor's Comment \_\_\_\_\_



SHATTUCK AVENUE



# LEGEND

● 1/4" BRASS PIN CITY MONUMENT  
IN A STANDARD MONUMENT WELL

+ SET REFERENCE CROSS

## NOTE:

THE EXISTING MONUMENT AS SHOWN IS  
REFERENCED BY STRAIGHT LINES BETWEEN  
RP-1 TO RP-3 AND RP-2 TO RP-4.