

**CORNER RECORD**

Document Number

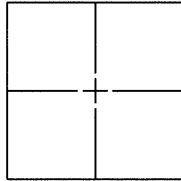
CR 7005City of OAKLAND

County of

ALAMEDA

, California

Brief Legal Description

CITY MONUMENT AT INTERSECTION OF INTERNATIONAL BLVD AND MILLER AVENUE**CORNER TYPE**

Government Corner ☐ Control ☐  
 Meander ☐ Property ☐  
 Rancho ☐ Other ☒  
 Date of Survey 2/27/2015

**COORDINATES (Optional)**

N. \_\_\_\_\_  
 E. \_\_\_\_\_  
 Zone \_\_\_\_\_ NAD27 ☐ NAD83 ☐  
 NAD83 Epoch \_\_\_\_\_  
 Elev. \_\_\_\_\_  
 Vet. Datum: NGVD29 ☐ NAVD88 ☐  
 Meas. Units: Metric ☐ Imperial ☒

**Corner** - Left as found ☒ Found and tagged ☐ Established ☐ Reestablished ☐ Rebuilt ☐

Identification and type of corner found: Evidence used to identify or procedure used to establish or reestablish the corner:

FOUND CONCRETE MONUMENT WITH PIN IN MONUMENT WELL IN STREET AT INTERSECTION OF INTERNATIONAL BLVD AND MILLER AVENUE.

SET REFERENCE POINTS; LEFT AS FOUND.

A description of the physical condition of the monument as found and as set or reset: \_\_\_\_\_

SET FOUR (4) REFERENCE POINTS, NAIL AND TAG, STAMPED LS 8593, IN CONCRETE TO BE USED TO RESET MONUMENT SHOULD IT BE DISTURBED OR DESTROYED DURING CONSTRUCTION ACTIVITIES.

(SEE SHEET 2 FOR GRAPHIC)

**SURVEYOR'S STATEMENT**

This Corner Record was prepared by me or under my direction in conformance with

the Land Surveyor's Act on \_\_\_\_\_ MARCH 10, \_\_\_\_\_ 20 15

Signed [Signature] P.L.S. or R.C.E. No. \_\_\_\_\_ L.S. # 8593

**COUNTY SURVEYOR'S STATEMENT**

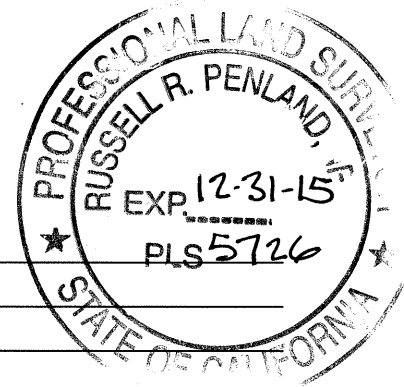
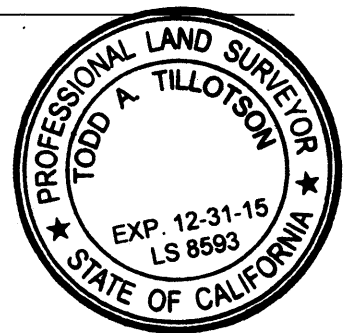
This Corner Record was received 3-30- 20 15

and examined and filed 4-16- 20 15

Signed [Signature] P.L.S. or R.C.E. No. 5726

Title COUNTY SURVEYOR

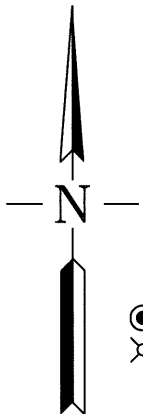
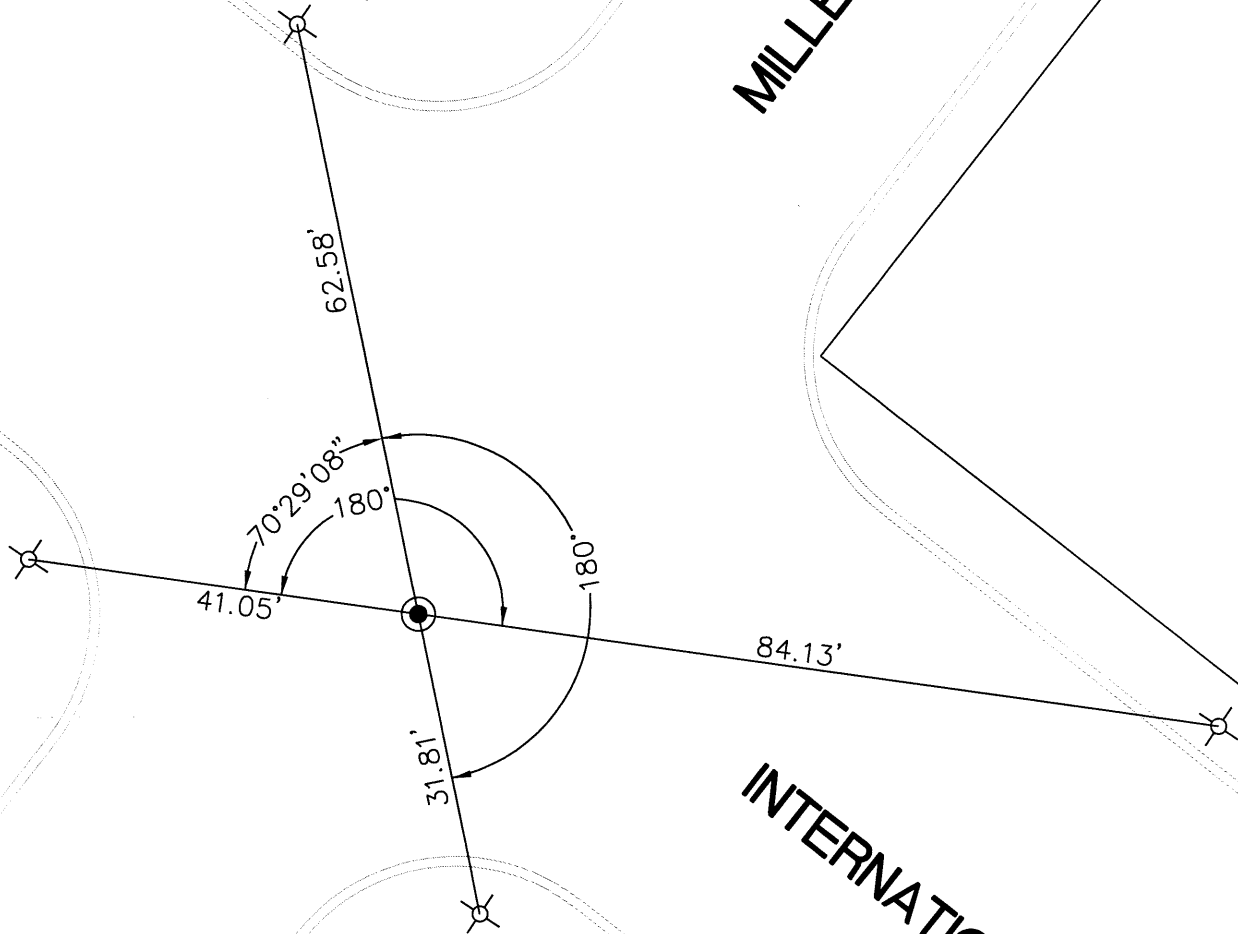
County Surveyor's Comment: \_\_\_\_\_



LUZZA1

MILLER AVENUE

INTERNATIONAL BLVD



**LEGEND**

- FOUND MONUMENT
- ⊗ SET NAIL & TAG, LS 8593

NOT TO SCALE