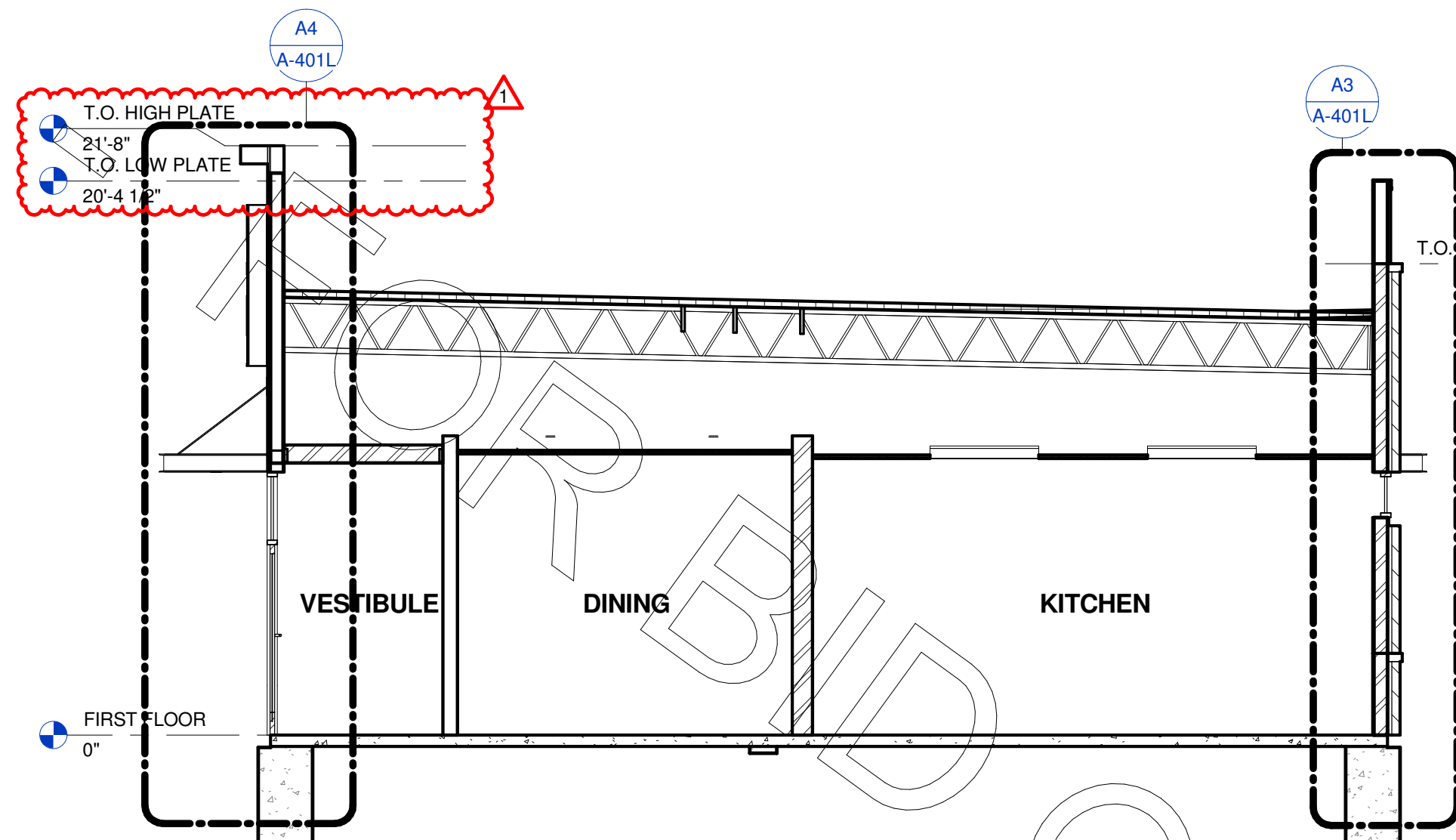
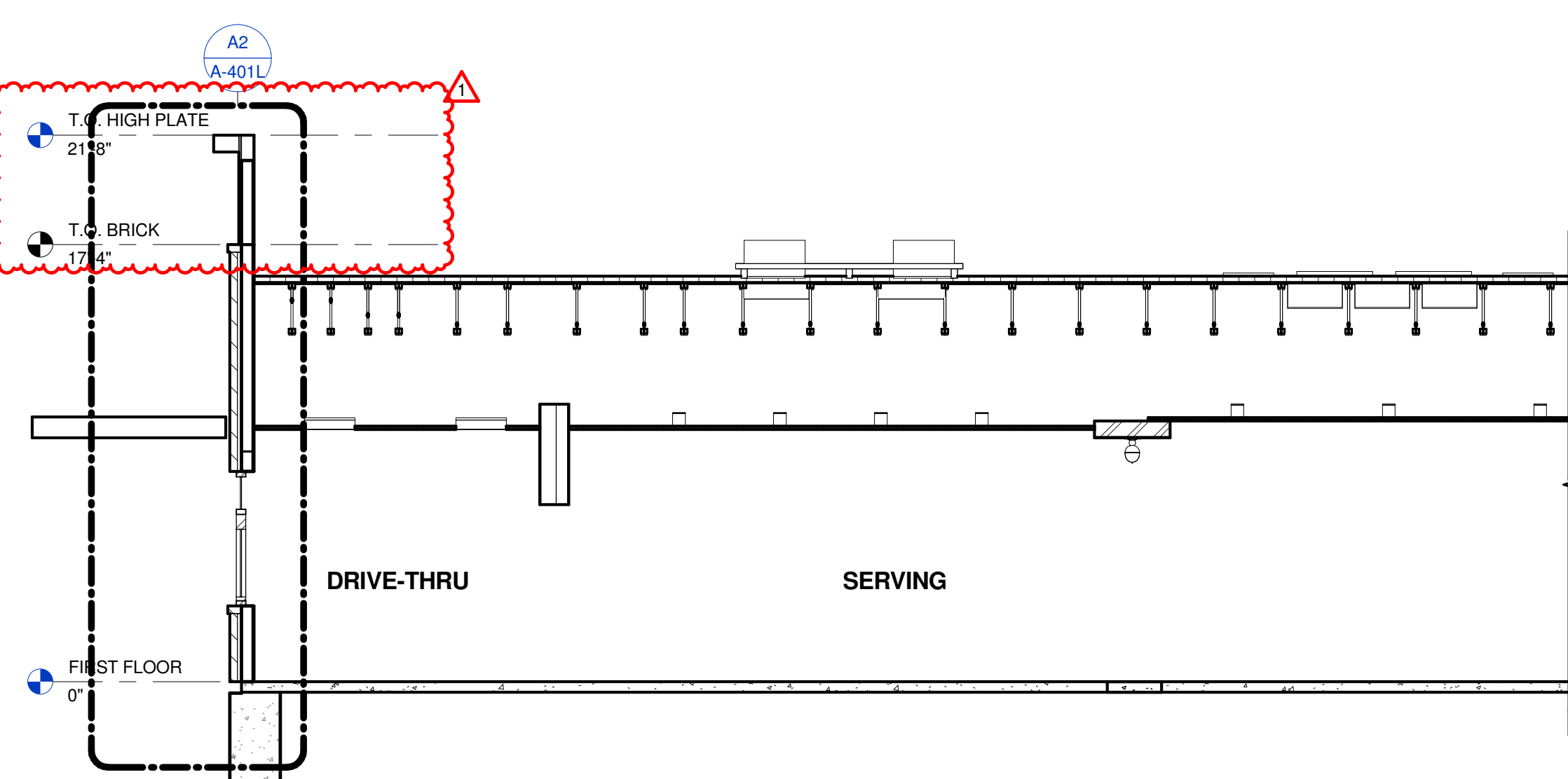


3/12/2018 10:38:45 AM

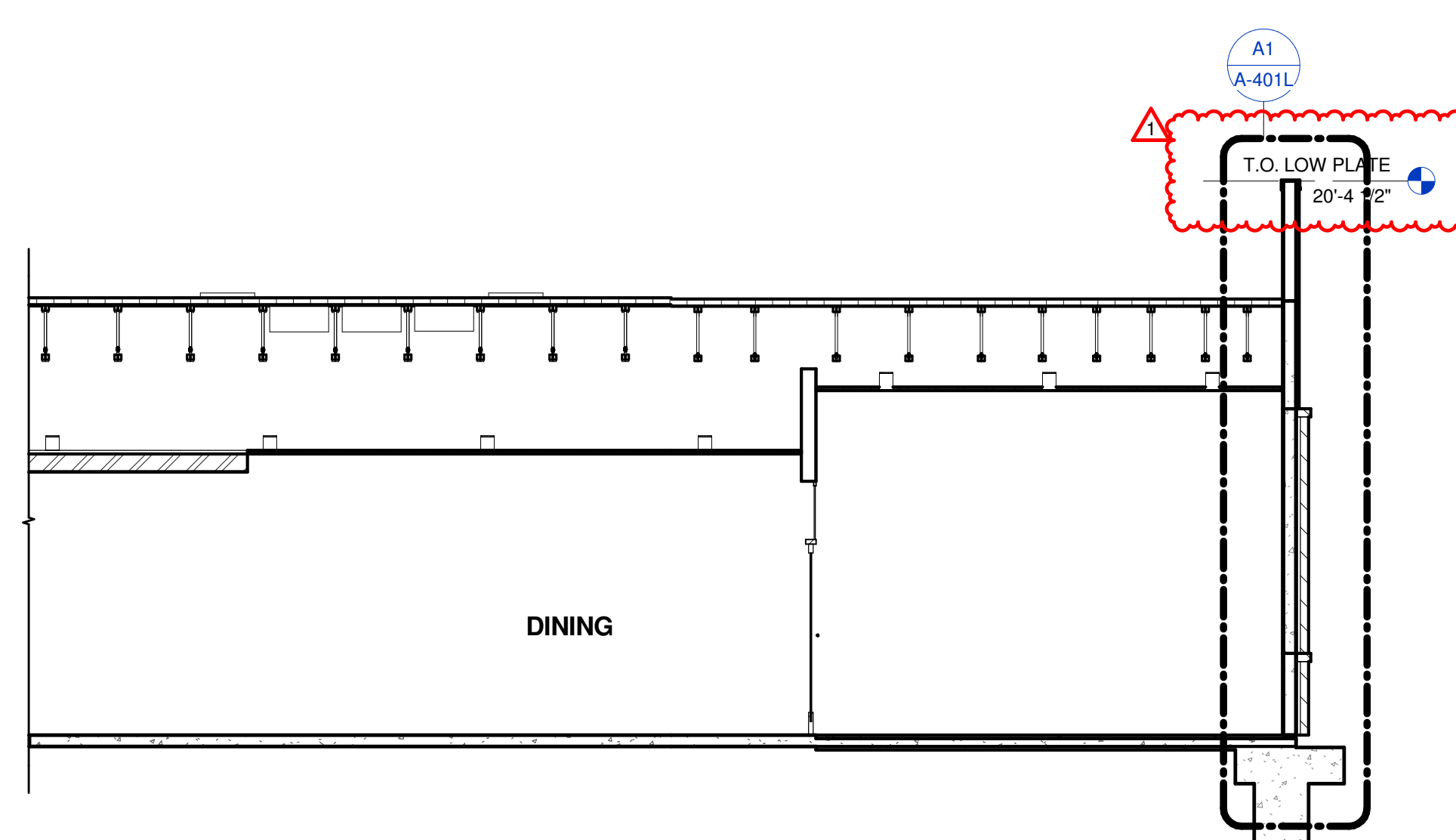
E  
D  
C  
B  
A



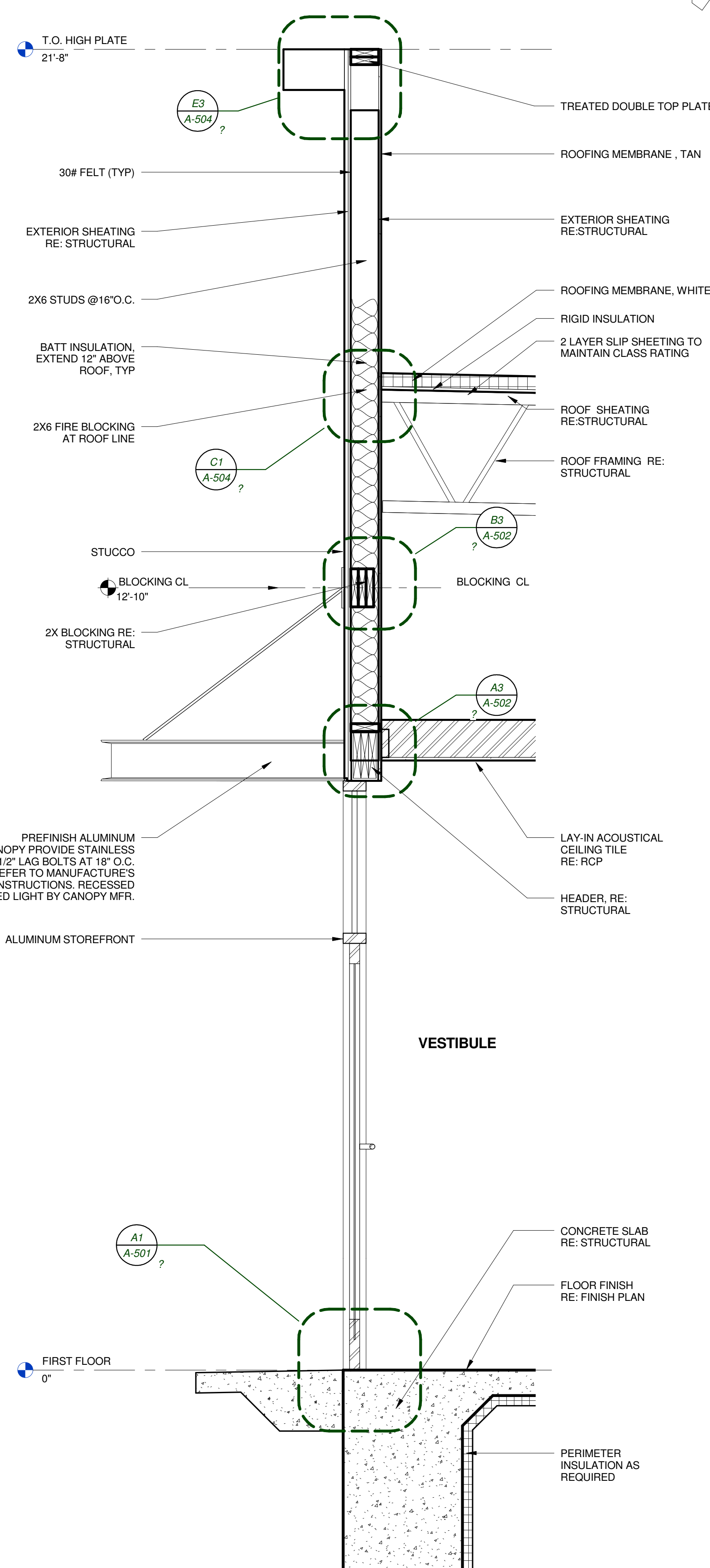
D4 BUILDING SECTION A1  
N.T.S.



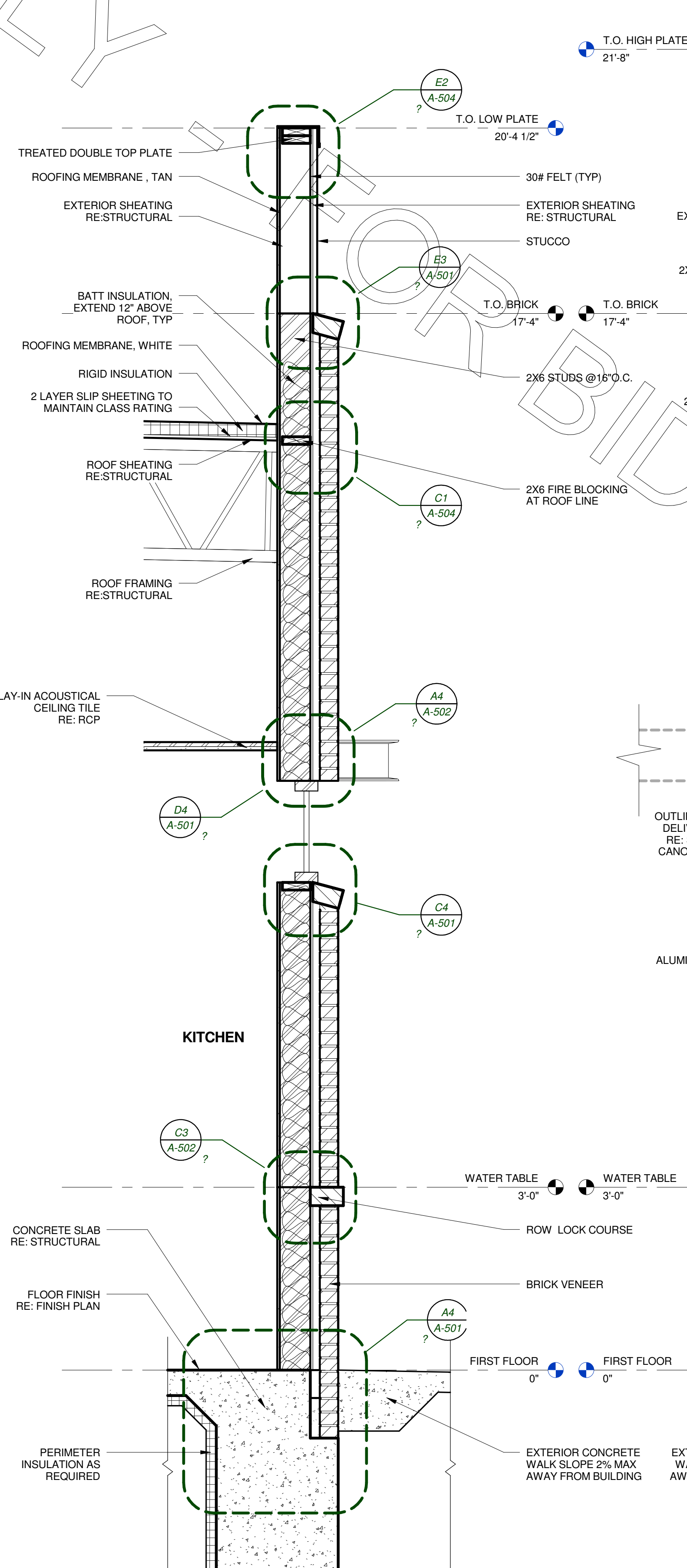
D2 BUILDING SECTION A2  
N.T.S.



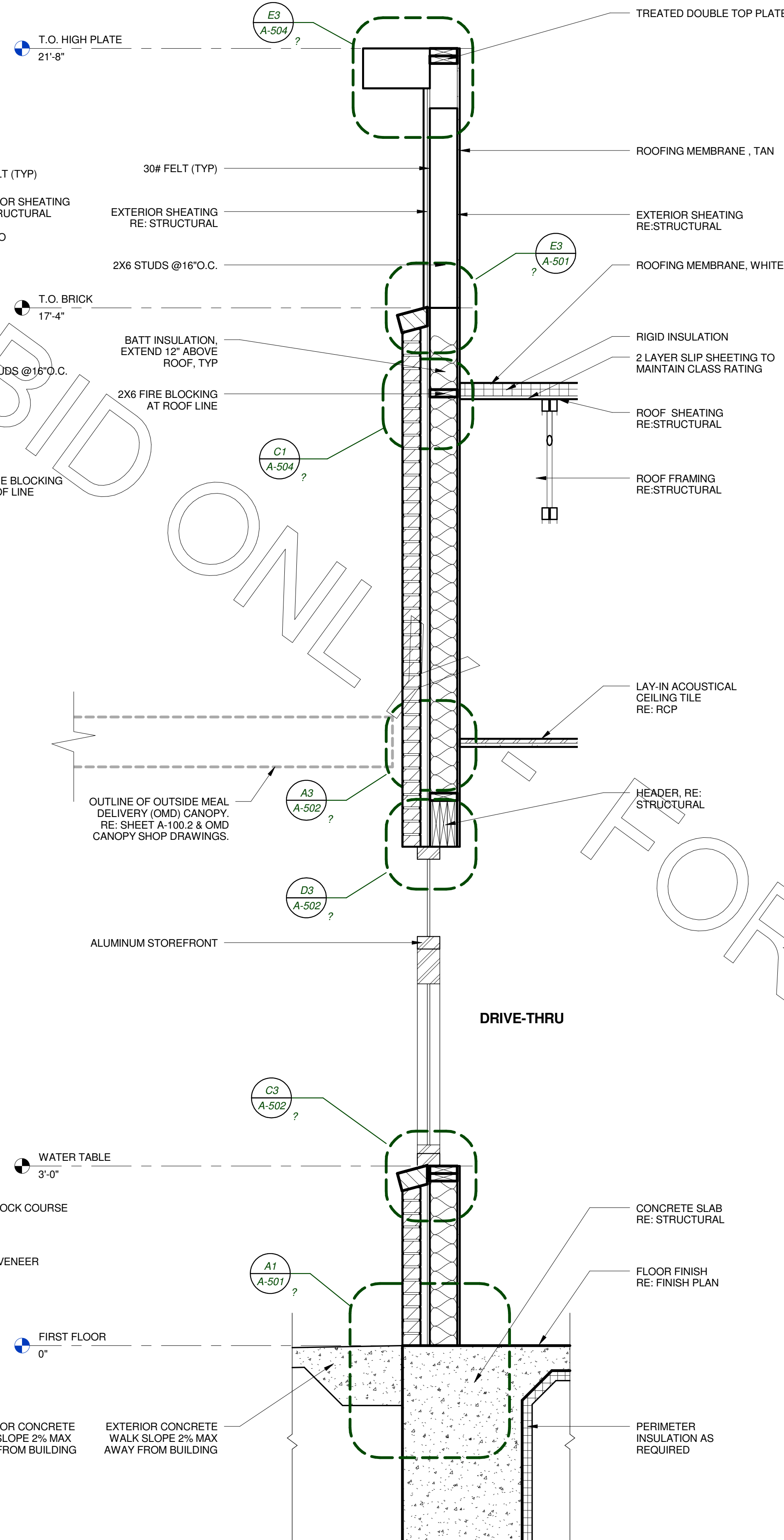
D1 BUILDING SECTION A1  
N.T.S.



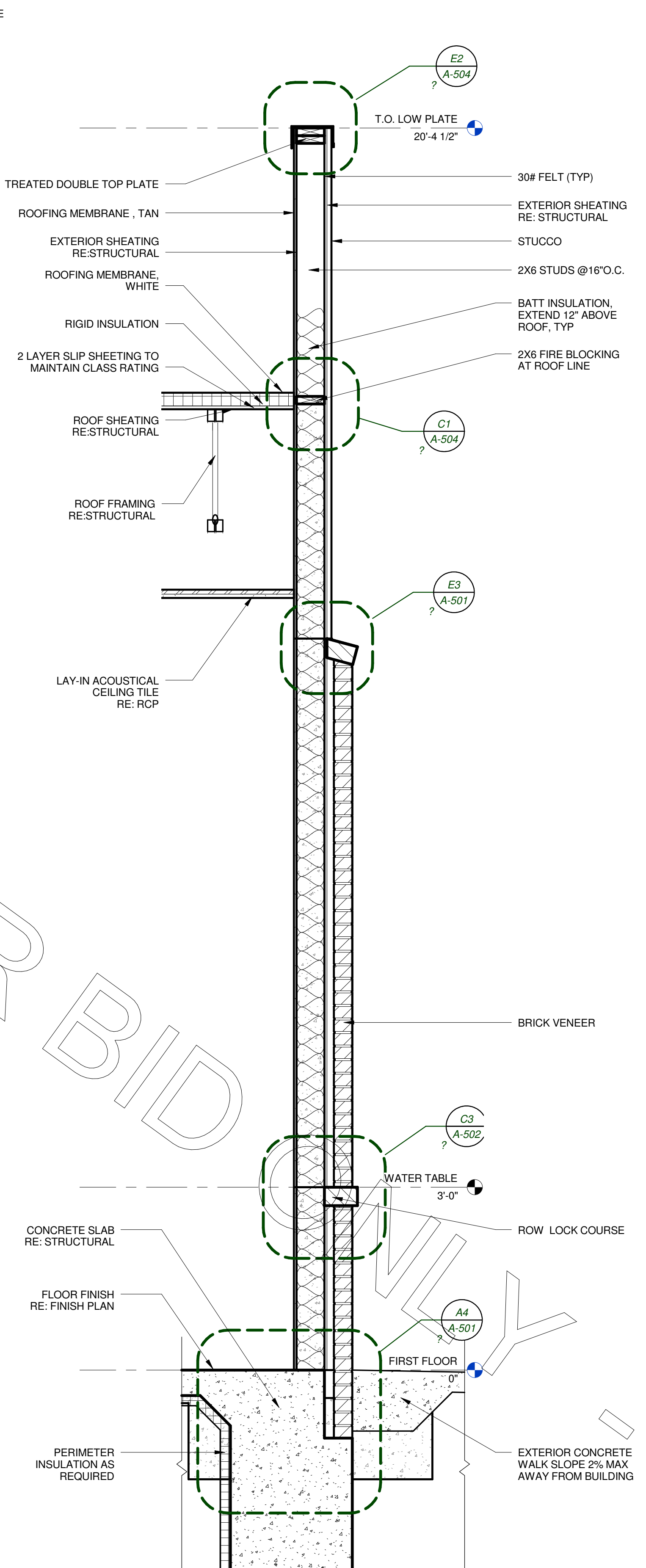
A4 Section 19 - Callout 1  
N.T.S.



A3 Detail 2  
N.T.S.



A2 Detail 1  
N.T.S.



A1 Detail 0  
N.T.S.



Chick-fil-A

Chick-fil-A  
5200 Buffington Road  
Atlanta, Georgia 30349-  
2998

INTERPLAN

ARCHITECTURE  
ENGINEERING  
INTERIOR DESIGN  
PROJECT MANAGEMENT

604 COURTLAND STREET  
SUITE 100  
ORLANDO, FLORIDA 32804  
PH 407.645.5008  
FX 407.629.9124

SEAL:  
THIS DOCUMENT IS NOT FOR CONSTRUCTION  
UNLESS THE ARCHITECT OR ENGINEER'S  
SIGNATURE AND SEAL APPEAR BELOW

CHICK-FIL-A  
Cherokee Place FSR  
115 Cherokee Place, Cartersville, GA 30121

FSR# 00534

REVISION SCHEDULE		
NO.	DATE	DESCRIPTION
1	01/19/18	COORDINATION REVISIONS

CONSULTANT PROJECT # 2017.0149  
PRINTED FOR Bid  
DATE November 20, 2017  
DRAWN BY AD

Information contained on this drawing and in all digital files  
produced for above named project may not be reproduced in  
any manner without express written or verbal consent from  
authorized project representatives.

SHEET BUILDING AND WALL  
SECTIONS

SHEET NUMBER

A-401L

Bid

COPYRIGHT © 2017 INTERPLAN LLC. RESERVES COPYRIGHT & OTHER RIGHTS RESTRICTING THESE DOCUMENTS TO THE ORIGINAL USE OR PURPOSE FOR WHICH THEY WERE PREPARED. REPRODUCTIONS, CHANGES OR ASSIGNMENTS ARE PROHIBITED.