

SHEET 1 OF 4 SHEETS  
SCALE: NOT TO SCALE

# RECORD OF SURVEY NO. 34-106

IN THE UNINCORPORATED TERRITORY  
OF MONO COUNTY, STATE OF CALIFORNIA

SECTION 12 & 13, TOWNSHIP 2 NORTH, RANGE 25 EAST, MOUNT DIABLO BASE & MERIDIAN

## NOTES

1. SEE SHEET 4 FOR REFERENCE  
AND MONUMENT NOTES.

LAWRENCE L. TRUMAN, PLS 5346  
DATE OF SURVEY: MAY 2020

**Michael Baker**

**INTERNATIONAL**

## CONTROL DIAGRAM & CONTROL TABLE

### STATEMENT OF PURPOSE

THE PURPOSE OF THIS SURVEY IS TO LOCATE  
EXISTING MONUMENTS AND ESTABLISH SECTION  
LINES PURSUANT TO THE BUSINESS &  
PROFESSIONS CODE, CHAPTER 15, §§ 8762 AND  
8771 OF THE PROFESSIONAL LAND SURVEYOR'S  
ACT IN SECTION 12 & 13 OF TOWNSHIP 2  
NORTH, RANGE 25 EAST, M.D.B.&M.

## RECORDER'S STATEMENT

FILED THIS 19 DAY OF November, 2020,  
AT 2:34P IN BOOK 5 OF RECORD OF  
SURVEYS AT PAGE 70-700, AT THE  
REQUEST OF SOUTHERN CALIFORNIA EDISON.

MONO COUNTY RECORDER

Shannon Kendall  
SHANNON KENDALL  
MONO COUNTY RECORDER

DOCUMENT NO: 2020-05530  
FEE: \$243.00

## SURVEYOR'S STATEMENT

THIS MAP CORRECTLY REPRESENTS A SURVEY MADE BY ME OR  
UNDER MY DIRECTION IN CONFORMANCE WITH THE REQUIREMENTS  
OF THE PROFESSIONAL LAND SURVEYORS' ACT AT THE REQUEST  
OF SOUTHERN CALIFORNIA EDISON IN \_\_\_\_\_ OF 2020.

LAWRENCE L. TRUMAN  
L.S. NO. 5346  
DATED 11/12/2020

## COUNTY SURVEYOR'S STATEMENT

THIS MAP HAS BEEN EXAMINED IN ACCORDANCE WITH SECTION  
8766 OF THE PROFESSIONAL LAND SURVEYORS' ACT THIS 16th  
DAY OF November, 2020.

MONO COUNTY SURVEYOR

John S. Parrish  
J.S. NO. 5050  
DATED 11/14/2020

## MONUMENT NOTES

● INDICATES FOUND MONUMENT AS NOTED AND REFERENCED  
HEREON AND ON SHEET 5.

▲ INDICATES PUBLISHED CSRC STATION MONUMENT AS NOTED.

## BASIS OF BEARINGS

(PURSUANT TO THE CALIFORNIA PUBLIC RESOURCE CODE,  
SECTIONS 8801-8819)

THE BEARINGS AND HORIZONTAL COORDINATES SHOWN HEREON  
ARE BASED ON THE CALIFORNIA COORDINATE SYSTEM OF 1983  
(CCS83), ZONE III, 2017.50 EPOCH AND WERE DETERMINED  
BY GLOBAL NAVIGATION SATELLITE SYSTEM (G.N.S.S.) TIES  
TO TWO CALIFORNIA SPATIAL REFERENCE NETWORK  
(C.S.R.N.) STATIONS REFERRED TO AS "P628" AND "DECH".

THE CCS83 GRID BEARING BETWEEN C.S.R.N. STATIONS P628  
AND DECH BEING NORTH 46°09'37" EAST, AS DERIVED FROM  
THE POSITIONS FOR SAID STATIONS, IN SAID EPOCH,  
PUBLISHED BY THE CALIFORNIA SPATIAL REFERENCE CENTER  
(C.S.R.C.) ON FEBRUARY 17, 2020, WAS USED AS THE  
BASIS OF BEARINGS FOR THIS SURVEY.

ALL VALUES ARE EXPRESSED IN U.S. SURVEY FEET  
(1 FOOT = 1200/3937 METERS)

ALL COORDINATES SHOWN HEREON ARE GRID COORDINATES.  
ALL MEASURED DISTANCES SHOWN HEREIN ARE GROUND  
DISTANCES UNLESS INDICATED OTHERWISE. GRID DISTANCES  
ARE SHOWN AS {XXX.XX'}. TO OBTAIN GRID DISTANCES  
WHERE NOT SHOWN, MULTIPLY GROUND DISTANCES BY A  
PROJECT SPECIFIC COMBINED SCALE FACTOR OF 0.99961014.

## BENCHMARK

THE BASIS OF ELEVATIONS FOR THIS SURVEY IS THE NORTH  
AMERICAN VERTICAL DATUM OF 1988 (NAVD88) PER THE NGS  
STATION IN USGS QUAD "LUNDY (2018)".

**BENCHMARK DESCRIPTION:** USCGS BRASS DISK SET IN 1 FOOT  
DIAMETER CONCRETE POST, FLUSH, IN SOUTHEAST QUADRANT  
OF MNO 395/MNO167 INTERSECTION, STAMPED "W 916 1957"

STATE/COUNTY: CA/MONO

POINT ID: NGSJR0719

PUBLISHED ELEVATION: 6894.13 FEET (NAVD88)

## ACCURACY STATEMENT:

THE DATA AND MEASUREMENTS SHOWN HEREON ARE DERIVED  
FROM A FIELD SURVEY PERFORMED USING A COMBINATION OF  
THE FOLLOWING INSTRUMENTS/METHODS: TRIMBLE S7 TOTAL  
STATION (1" STANDARD DEVIATION) (0.3 MGON) (1 MM + 2  
PPM) (0.003 FT. + 2 PPM), STATIC GNSS SURVEY PERFORMED  
WITH A TRIMBLE R10 GNSS SYSTEM (HORIZONTAL 3 MM + 0.5  
PPM RMS), AND ELECTRONIC DIFFERENTIAL LEVELING  
PERFORMED WITH A TRIMBLE DINI DIGITAL LEVEL (1.0 MM  
STANDARD DEVIATION PER 1 KM).

SAID FIELD DATA WAS INCORPORATED INTO A CORRECTLY  
WEIGHTED FULLY CONSTRAINED LEAST SQUARES CONTROL  
NETWORK ADJUSTMENT PERFORMED USING TRIMBLE BUSINESS  
CENTER V5.00 AND STARNET V9 SOFTWARE. THE RESULTS OF  
SAID ADJUSTMENT PRODUCED AN AVERAGE LENGTH OF 0.02'  
FOR THE SEMI-MAJOR AXIS OF THE ERROR ELLIPSE EXPRESSED  
IN FEET AT THE 95% CONFIDENCE LEVEL. THIS REPRESENTS  
THE UNCERTAINTY DUE TO RANDOM ERRORS IN THE  
MEASUREMENTS OF THE LOCATIONS OF THE MONUMENTS AND  
WITNESS MARKERS USED FOR THE ESTABLISHMENT OF THE  
SECTION LINES SHOWN HEREON.

CRSC CORS STATION "P628"(TIOGA\_PASS)  
LATITUDE: 37°56'03.2174"  
LONGITUDE: 119°14'57.6198"  
CALIFORNIA STATE PLANE COORDINATE SYSTEM (SPCS) ZONE 3,  
NORTH AMERICAN DATUM 1983 (2017.50 EPOCH SOPAC SECTOR  
ADJUSTMENT JULY 02, 2017)  
NORTHING: 2165045.88  
EASTING: 6922348.98  
ELLIPSOID HEIGHT: 9596.36  
COMBINED FACTOR = 0.99947554  
CONVERGENCE ANGLE = 0°45'56.50"

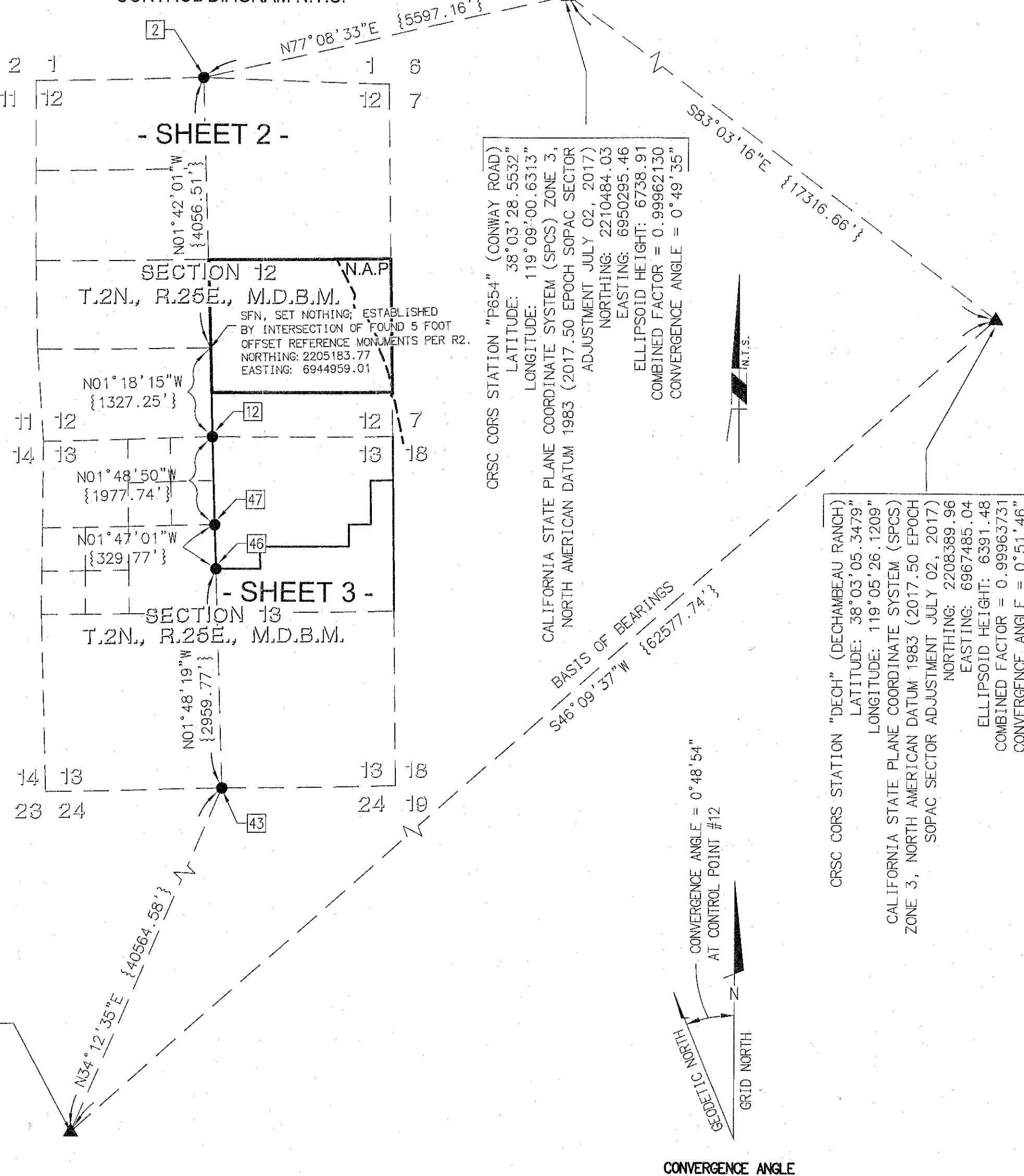
## RECORD REFERENCES

- () = INDICATES RECORD INFORMATION AS NOTED.  
{ } = INDICATES GRID DISTANCE.  
M&R = INDICATES MEASURE AND RECORD AS NOTED.  
R1 = RECORD OF SURVEY MAP NO. 34-59 FILED ON FEBRUARY 2,  
1995 IN BOOK 3 OF RECORD OF SURVEYS AT PAGE 20.  
R2 = RECORD OF SURVEY MAP NO. 34-12 FILED ON AUGUST 22, 1968 IN BOOK  
5 OF RECORD OF SURVEYS AT PAGES 125-125C.  
R3 = RECORD OF SURVEY MAP NO. 34-12 FILED ON APRIL 15, 1981  
IN BOOK 1 OF RECORD OF SURVEYS AT PAGES 68-68D.  
R4 = FINAL MAP NO. 34-3 FILED ON FEBRUARY 9, 1971 IN BOOK  
2 OF PARCEL MAPS AT PAGES 57-57D.  
R5 = UNITED STATES DEPARTMENT OF THE INTERIOR BUREAU OF  
LAND MANAGEMENT PLAT OF THE DEPENDENT RESURVEY  
OF SECTION 13, T2N, R25E, M.D.B.&M, GROUP NO. 1338,  
ACCEPTED JULY 26, 2002.  
R6 = RECORD OF SURVEY MAP NO. 34-60 FILED ON NOVEMBER 22,  
1994 IN BOOK 3 OF RECORD OF SURVEYS AT PAGE 15-15G.  
R7 = CORNER RECORD FILED ON DECEMBER, 2010 IN DOCUMENT  
NO. 2N25-12-01.  
R8 = CORNER RECORD FILED ON DECEMBER, 2010 IN DOCUMENT  
NO. 2N25-12-02.  
R9 = UNITED STATES DEPARTMENT OF THE INTERIOR BUREAU OF  
LAND MANAGEMENT PLAT OF THE DEPENDENT RESURVEY  
OF SECTION 7 AND 18, T2N, R26E, M.D.B.&M, GROUP NO.  
1284, ACCEPTED AUGUST 1, 2002.  
R10 = UNITED STATES DEPARTMENT OF THE INTERIOR BUREAU OF  
LAND MANAGEMENT FIELD NOTES OF THE DEPENDENT RESURVEY  
OF SECTION 13, T2N, R25E, M.D.B.&M, GROUP NO. 1338,  
ACCEPTED JULY 26, 2002.  
R11 = UNITED STATES DEPARTMENT OF THE INTERIOR BUREAU OF  
LAND MANAGEMENT FIELD NOTES OF THE DEPENDENT RESURVEY  
OF SECTION 7 AND 18, T2N, R26E, M.D.B.&M, GROUP NO.  
1284, ACCEPTED AUGUST 1, 2002.

## GRID CONTROL TABLE VALUES

POINT	NORTHING	EASTING	ELEVATION (NAVD88)	DESCRIPTION
2	2209238.50	6944838.64	6965.31'	FOUND 3/4" STEEL PIN, NO PLUG, IN STONE, FLUSH IN LIEU OF 1" IRON ROD STAMPED "LS 1112" IN STONE PER R1.
12	2203856.87	6944989.22	7017.64'	FOUND 2 1/2" STEEL POST WITH BRASS CAP STAMPED, "BLM T2N R25E 1/4 S12 S13 1999" IN DIRT, FLUSH PER R2, R5, AND R10.
43	2198592.21	6945155.32	7010.69'	FOUND 2 1/2" STEEL POST WITH BRASS CAP STAMPED, "BLM T2N R25E 1/4 S13 S24" IN DIRT, FLUSH PER R5 AND R10.
46	2201550.51	6945062.08	7110.97'	FOUND 2 1/2" STEEL POST WITH BRASS CAP STAMPED, "BLM C-S-S-N 1/256 S13 1999" IN DIRT, ACCEPTED AS CENTER-SOUTH-SOUTH-NORTH SECTION CORNER OF SECTION 13 PER R5 AND R10.
47	2201880.12	6945051.82	7072.19'	FOUND 2 1/2" STEEL POST WITH BRASS CAP STAMPED, "BLM C-S-S-N 1/64 S 13 1999" IN DIRT, ACCEPTED AS THE CENTER-SOUTH-NORTH 1/64 SECTION CORNER OF SECTION 13 PER R5 AND R10

## CONTROL DIAGRAM N.T.S.



CONVERGENCE ANGLE

# RECORD OF SURVEY NO. 34-106

IN THE UNINCORPORATED TERRITORY  
OF MONO COUNTY, STATE OF CALIFORNIA

SECTION 12 & 13, TOWNSHIP 2 NORTH, RANGE 25 EAST, MOUNT DIABLO BASE & MERIDIAN

## NOTES

1. SEE SHEET 4 FOR DETAILS, REFERENCES  
AND MONUMENT NOTES.

## RECORD REFERENCES

- ( ) = INDICATES RECORD INFORMATION AS NOTED.  
{} = INDICATES GRID DISTANCE.  
M&R = INDICATES MEASURE AND RECORD AS NOTED.  
R1 = RECORD OF SURVEY MAP NO. 34-59 FILED ON FEBRUARY 2,  
1995 IN BOOK 3 OF RECORD OF SURVEYS AT PAGE 20.  
R2 = RECORD OF SURVEY MAP FILED ON AUGUST 22, 1968 IN BOOK  
5 OF RECORD OF SURVEYS AT PAGES 125-125C.  
R3 = RECORD OF SURVEY MAP NO. 34-12 FILED ON APRIL 15, 1981  
IN BOOK 1 OF RECORD OF SURVEYS AT PAGES 68-68D.  
R4 = FINAL MAP NO. 34-3 FILED ON FEBRUARY 9, 1971 IN BOOK  
2 OF PARCEL MAPS AT PAGES 57-57D.  
R5 = UNITED STATES DEPARTMENT OF THE INTERIOR BUREAU OF  
LAND MANAGEMENT PLAT OF THE DEPENDENT RESURVEY  
OF SECTION 13, T2N, R25E, M.D.B.&M, GROUP NO. 1338,  
ACCEPTED JULY 26, 2002.  
R6 = RECORD OF SURVEY MAP NO. 34-60 FILED ON NOVEMBER 22,  
1994 IN BOOK 3 OF RECORD OF SURVEYS AT PAGE 15-15C.  
R7 = CORNER RECORD FILED ON DECEMBER, 2010 IN DOCUMENT  
NO. 2N25-12-01.  
R8 = CORNER RECORD FILED ON DECEMBER, 2010 IN DOCUMENT  
NO. 2N25-12-02.  
R9 = UNITED STATES DEPARTMENT OF THE INTERIOR BUREAU OF  
LAND MANAGEMENT PLAT OF THE DEPENDENT RESURVEY  
OF SECTION 7 AND 18, T2N, R26E, M.D.B.&M, GROUP NO.  
1284, ACCEPTED AUGUST 1, 2002.  
R10 = UNITED STATES DEPARTMENT OF THE INTERIOR BUREAU OF  
LAND MANAGEMENT FIELD NOTES OF THE DEPENDENT RESURVEY  
OF SECTION 13, T2N, R25E, M.D.B.&M, GROUP NO. 1338,  
ACCEPTED JULY 26, 2002.  
R11 = UNITED STATES DEPARTMENT OF THE INTERIOR BUREAU OF  
LAND MANAGEMENT FIELD NOTES OF THE DEPENDENT RESURVEY  
OF SECTION 7 AND 18, T2N, R26E, M.D.B.&M, GROUP NO.  
1284, ACCEPTED AUGUST 1, 2002.

LAWRENCE L. TRUMAN, PLS 5346

**Michael Baker**  
**INTERNATIONAL**

DATE OF SURVEY: MAY 2020

## ESTABLISHMENT NOTES

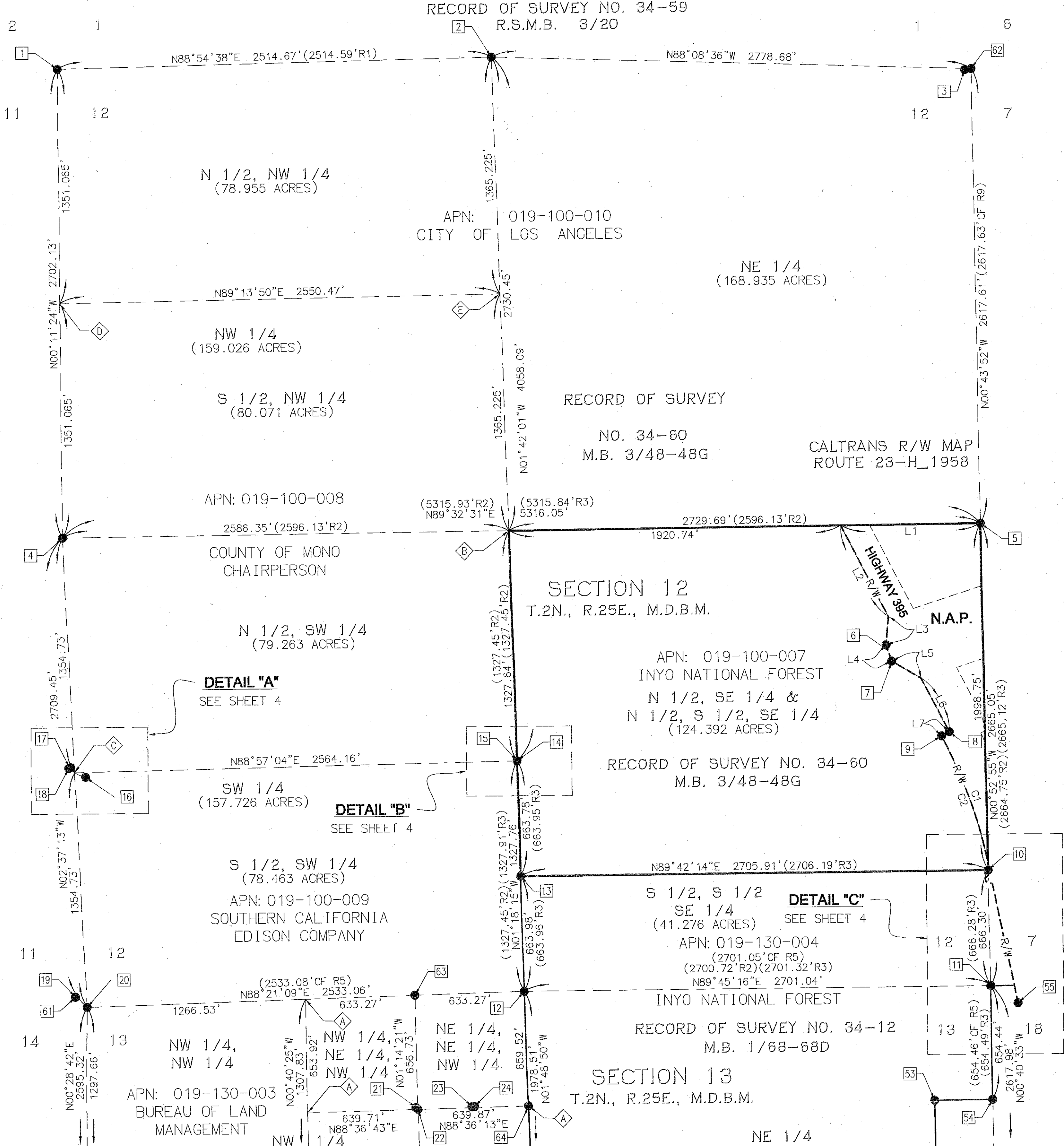
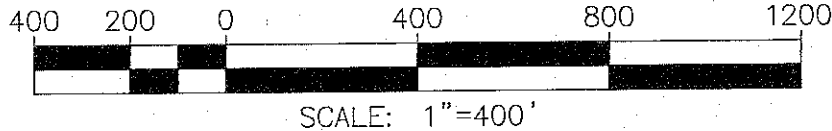
- (A) - ESTABLISHED BY SINGLE PROPORTION PER R5, NOTHING SET.  
(B) - ESTABLISHED BY INTERSECTION, NOTHING SET.  
(C) - SFN, ESTABLISHED THE S 1/16 BETWEEN SECTIONS 11 & 12 AT  
THE MIDPOINT OF THE W LINE OF THE SW 1/4 OF SECTION 12,  
NOTHING SET.  
(D) - ESTABLISHED THE N 1/16 BETWEEN SECTIONS 11 & 12 AT THE  
MID POINT OF THE W LINE OF THE NW 1/4 OF SECTION 12,  
NOTHING SET.  
(E) - ESTABLISHED THE N 1/16 BETWEEN NE 1/4 AND NW 1/4 SECTION  
12 AT THE MID POINT OF THE W LINE OF THE NE 1/4 OF SECTION  
12, NOTHING SET.

## CURVE DATA TABLE

NO.	DELTA	RADIUS	LENGTH	RECORD DATA
C1	15°47'47"	2850.00'	785.74'	{785.42'R6}
C2	15°36'43"	2850.00'	776.57'	--

## LINE DATA TABLE

NO.	DIRECTION	LENGTH	RECORD DATA
L1	N89°32'31"E	808.96'	--
L2	N27°32'26"W	593.97'	--
L3	N05°34'34"E	162.47'	{162.41'R6}
L4	N17°51'59"W	99.91'	{99.96'R6}
L5	N59°28'04"W	196.90'	{196.09'R6}
L6	N27°45'26"W	349.71'	{350.92'R6}
L7	N62°27'49"E	50.01'	{49.98'R6}
L8	N59°58'19"W	112.33'	--



- SEE SHEET 3 -

# RECORD OF SURVEY NO. 34-106

 IN THE UNINCORPORATED TERRITORY  
 OF MONO COUNTY, STATE OF CALIFORNIA

SECTION 12 &amp; 13, TOWNSHIP 2 NORTH, RANGE 25 EAST, MOUNT DIABLO BASE &amp; MERIDIAN

400 200 0 400 800 1200

SCALE: 1"=400'

## NOTES

- SEE SHEET 4 FOR DETAILS, REFERENCES AND MONUMENT NOTES.

## RECORD REFERENCES

- LAWRENCE L. TRUMAN, PLS 5346
- ( ) = INDICATES RECORD INFORMATION AS NOTED.  
 {} = INDICATES GRID DISTANCE.  
 M&R = INDICATES MEASURE AND RECORD AS NOTED.  
 R1 = RECORD OF SURVEY MAP NO. 34-59 FILED ON FEBRUARY 2, 1995 IN BOOK 3 OF RECORD OF SURVEYS AT PAGE 20.  
 R2 = RECORD OF SURVEY MAP FILED ON AUGUST 22, 1968 IN BOOK 5 OF RECORD OF SURVEYS AT PAGES 125-125C.  
 R3 = RECORD OF SURVEY MAP NO. 34-12 FILED ON APRIL 15, 1981 IN BOOK 1 OF RECORD OF SURVEYS AT PAGES 68-68D.  
 R4 = FINAL MAP NO. 34-3 FILED ON FEBRUARY 9, 1971 IN BOOK 2 OF PARCEL MAPS AT PAGES 57-57D.  
 R5 = UNITED STATES DEPARTMENT OF THE INTERIOR BUREAU OF LAND MANAGEMENT FLAT OF THE DEPENDENT RESURVEY OF SECTION 13, T2N, R25E, M.D.B.&M, GROUP NO. 1338, ACCEPTED JULY 26, 2002.  
 R6 = RECORD OF SURVEY MAP NO. 34-60 FILED ON NOVEMBER 22, 1994 IN BOOK 3 OF RECORD OF SURVEYS AT PAGE 15-15C.  
 R7 = CORNER RECORD FILED ON DECEMBER, 2010 IN DOCUMENT NO. 2N25-12-01.  
 R8 = CORNER RECORD FILED ON DECEMBER, 2010 IN DOCUMENT NO. 2N25-12-02.  
 R9 = UNITED STATES DEPARTMENT OF THE INTERIOR BUREAU OF LAND MANAGEMENT FLAT OF THE DEPENDENT RESURVEY OF SECTION 7 AND 18, T2N, R26E, M.D.B.&M, GROUP NO. 1284, ACCEPTED AUGUST 1, 2002.  
 R10 = UNITED STATES DEPARTMENT OF THE INTERIOR BUREAU OF LAND MANAGEMENT FIELD NOTES OF THE DEPENDENT RESURVEY OF SECTION 13, T2N, R25E, M.D.B.&M, GROUP NO. 1338, ACCEPTED JULY 26, 2002.  
 R11 = UNITED STATES DEPARTMENT OF THE INTERIOR BUREAU OF LAND MANAGEMENT FIELD NOTES OF THE DEPENDENT RESURVEY OF SECTION 7 AND 18, T2N, R26E, M.D.B.&M, GROUP NO. 1284, ACCEPTED AUGUST 1, 2002.

## ESTABLISHMENT NOTES

- (A) - ESTABLISHED BY SINGLE PROPORTION PER R5, NOTHING SET.  
 (B) - ESTABLISHED BY INTERSECTION, NOTHING SET.  
 (C) - SFN, ESTABLISHED THE S 1/16 BETWEEN SECTIONS 11 & 12 AT THE MIDPOINT OF THE W LINE OF THE SW 1/4 OF SECTION 12, NOTHING SET.  
 (D) - ESTABLISHED THE N 1/16 BETWEEN SECTIONS 11 & 12 AT THE MID POINT OF THE W LINE OF THE NW 1/4 OF SECTION 12, NOTHING SET.  
 (E) - ESTABLISHED THE N 1/16 BETWEEN NE 1/4 AND NW 1/4 SECTION 12 AT THE MID POINT OF THE W LINE OF THE NE 1/4 OF SECTION 12, NOTHING SET.

**Michael Baker**  
**INTERNATIONAL**

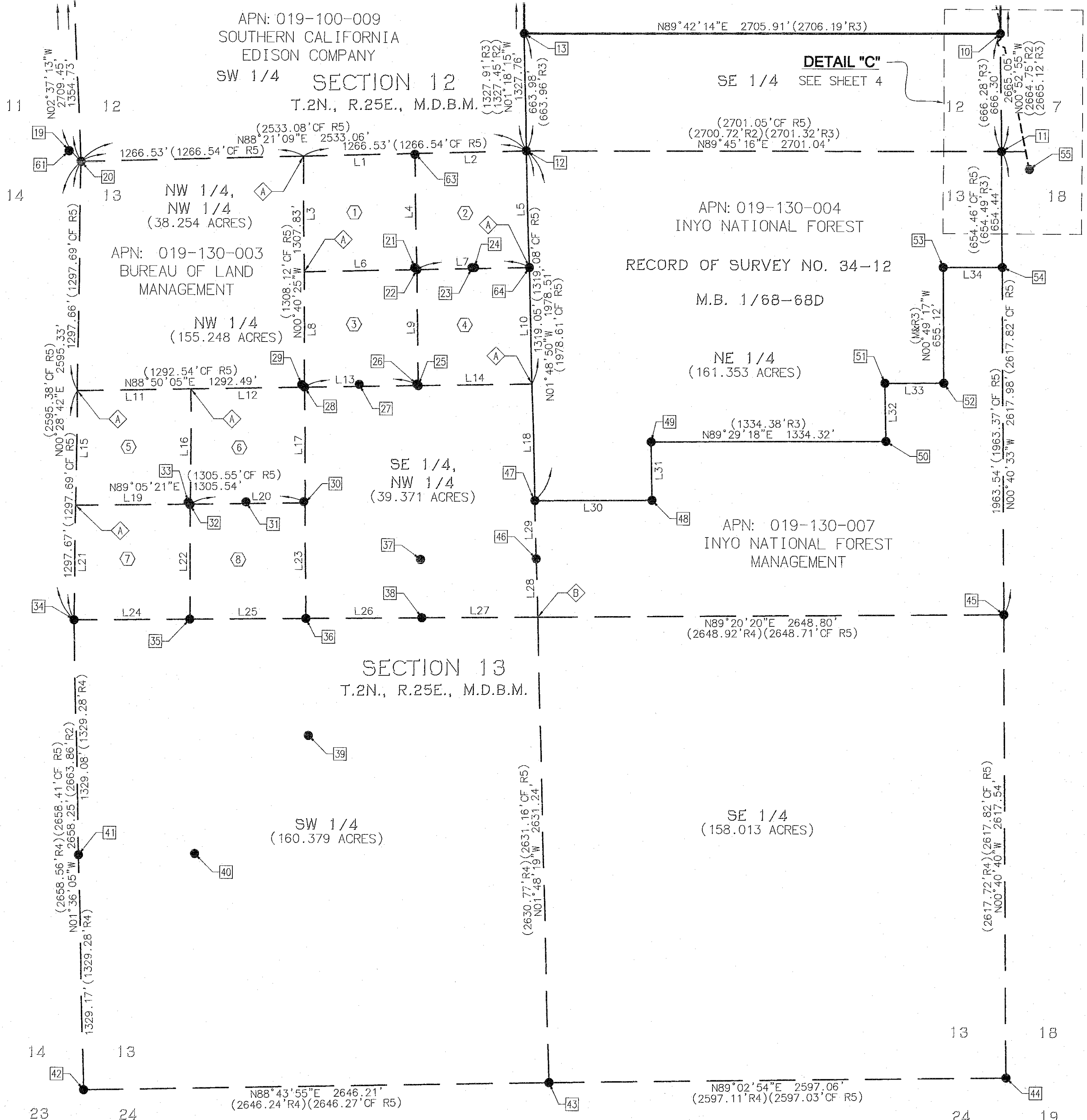
DATE OF SURVEY: MAY 2020

DATA TABLE			
NO.	DIRECTION	LENGTH	RECORD DATA
L1	N88°21'09"E	633.27'	(M&CF R5)
L2	N88°21'09"E	633.27'	(M&CF R5)
L3	N00°40'25"W	653.92'	(654.06'CF R5)
L4	N01°14'21"W	656.73'	(656.77'CF R5)
L5	N01°48'50"W	659.52'	(659.54'CF R5)
L6	N88°36'43"E	639.71'	(639.80'CF R5)
L7	N88°36'13"E	639.87'	(639.80'CF R5)
L8	N00°40'25"W	653.92'	(654.06'CF R5)
L9	N01°15'25"W	656.67'	(656.77'CF R5)
L10	N01°48'50"W	659.52'	(659.54'CF R5)
L11	N88°50'05"E	646.24'	(646.27'CF R5)
L12	N88°50'05"E	646.24'	(646.27'CF R5)
L13	N88°51'36"E	646.36'	(646.40'CF R5)
L14	N88°51'19"E	646.28'	(646.40'CF R5)
L15	N00°28'42"E	648.83'	(648.85'CF R5)
L16	N00°05'36"W	651.58'	(651.42'CF R5)
L17	N00°40'40"W	654.39'	(654.06'CF R5)
L18	N01°48'50"W	659.47'	(659.54'CF R5)
L19	N89°05'21"E	652.67'	(652.74'CF R5)
L20	N89°05'21"E	652.87'	(652.81'CF R5)

DATA TABLE			
NO.	DIRECTION	LENGTH	RECORD DATA
L21	N00°28'42"E	648.84'	(648.85'CF R5)
L22	N00°06'03"W	651.24'	(651.29'CF R5)
L23	N00°39'34"W	653.97'	(654.06'CF R5)
L24	N89°18'32"E	659.20'	(659.21'CF R5)
L25	N89°19'54"E	659.21'	(659.34'CF R5)
L26	N89°18'06"E	659.52'	(659.60'CF R5)
L27	N89°20'20"E	659.22'	(659.14'CF R5)
L28	N01°48'19"W	329.68'	(329.67'CF R5)
L29	N01°47'01"W	329.90'	(329.87'CF R5)
L30	N89°28'18"E	665.32'	---
L31	N01°32'52"W	329.18'	(329.15'CF R3)
L32	N00°57'39"W	327.87'	(327.88'CF R5)
L33	N89°33'21"E	334.43'	(334.41'CF R5)
L34	N89°38'15"E	335.93'	(336.03'CF R5)

AREA TABLE		
#	SECTION 13 BREAKDOWN	AREA
1	NW1/4, NE1/4, NW1/4	9.575 ACRES
2	NE1/4, NE1/4, NW1/4	9.617 ACRES
3	SW1/4, NE1/4, NW1/4	9.673 ACRES
4	SE1/4, NE1/4, NW1/4	9.715 ACRES
5	NW1/4, SW1/4, NW1/4	9.692 ACRES
6	NE1/4, SW1/4, NW1/4	9.736 ACRES
7	SW1/4, SW1/4, NW1/4	9.787 ACRES
8	SE1/4, SW1/4, NW1/4	9.828 ACRES

- SEE SHEET 2 -



# RECORD OF SURVEY NO. 34-106

IN THE UNINCORPORATED TERRITORY  
OF MONO COUNTY, STATE OF CALIFORNIA

SECTION 12 & 13, TOWNSHIP 2 NORTH, RANGE 25 EAST, MOUNT DIABLO BASE & MERIDIAN

LAWRENCE L. TRUMAN, PLS 5346

**Michael Baker**

DATE OF SURVEY: MAY 2020

## INTERNATIONAL

### MONUMENT NOTES

- INDICATES FOUND MONUMENT AS NOTED AND REFERENCED.
- ▲ INDICATES PUBLISHED CSRC STATION MONUMENT AS NOTED.

- 1 FOUND 2" IRON PIPE (OPEN) IN DIRT, UP 3.5' ACCEPTED AS NORTHWEST CORNER OF SECTION 12 PER R1.
- 2 FOUND 3/4" STEEL PIN, NO PLUG, IN STONE, FLUSH ACCEPTED AS NORTH 1/4 CORNER OF SECTION 12 IN LIEU OF 1" IRON ROD STAMPED "LS 1112" IN STONE PER R1.
- 3 FOUND 2 1/2" STEEL POST WITH BRASS CAP STAMPED "LS 4587" IN DIRT, ACCEPTED AS REFERENCE TIE TO THE NORTHEAST CORNER OF SECTION 12 PER R11, LYING S80°43'00"W 38.12 FEET TO MONUMENT [62].
- 4 FOUND 2" IRON PIPE WITH TAG STAMPED "LS 4587" IN DIRT, NO REFERENCE, ACCEPTED AS WEST 1/4 CORNER OF SECTION 12 IN LIEU OF 2" IRON PIPE IN M/S 30" BASE', PER R2.
- 5 FOUND 2 1/2" STEEL POST WITH BRASS CAP STAMPED "BLM T2N R25E 1/4 R26E S12 S7 1999" IN DIRT, ACCEPTED AS EAST 1/4 CORNER OF SECTION 12 PER R7.
- 6 FOUND 6X6" CONCRETE POST IN DIRT, UP 0.3' ACCEPTED AS POINT ON CALTRANS R.O.W. LINE PER R6.
- 7 FOUND 6X6" CONCRETE POST IN DIRT, ACCEPTED AS POINT ON CALTRANS R.O.W. LINE PER R6.
- 8 FOUND 6X6" CONCRETE POST IN DIRT, DOWN 1.0' ACCEPTED AS POINT ON CALTRANS R.O.W. LINE PER R6.
- 9 FOUND 6X6" CONCRETE POST IN DIRT, UP 0.6' ACCEPTED AS POINT ON CALTRANS R.O.W. LINE PER R6.
- 10 FOUND 2 1/2" STEEL POST WITH BRASS CAP STAMPED "BLM S-S 1/64 S12 S7 1999" IN DIRT, ACCEPTED AS THE S-S 1/64 CORNER OF SECTION 7 AND 12, PER R9 AND R11.
- 11 FOUND 2 1/2" STEEL POST WITH BRASS CAP STAMPED "BLM T2N R25E R26E S12 S7 S13 S18 1999" IN DIRT, ACCEPTED AS NORTHEAST CORNER OF SECTION 13 PER R8.
- 12 FOUND 2 1/2" STEEL POST WITH BRASS CAP STAMPED "BLM T2N R25E 1/4 S12 S13 1999" IN DIRT, ACCEPTED AS NORTH 1/4 CORNER OF SECTION 13 PER R5 AND R10.
- 13 FOUND 1 1/2" IRON PIPE WITH TAG STAMPED "RCE 27104" IN DIRT, PER R3.
- 14 FOUND 2 1/2" STEEL POST WITH BRASS CAP STAMPED "SCE RCE 7211 5FT RP" IN DIRT, ACCEPTED AS REFERENCE POSTS TO 1/16 CORNER OF SECTION 12 PER R2.
- 15 FOUND 2 1/2" STEEL POST WITH BRASS CAP STAMPED "SCE RCE 7211 5FT RP" IN DIRT, ACCEPTED AS REFERENCE POSTS TO 1/16 CORNER OF SECTION 12 PER R2.
- 16 FOUND 2 1/2" STEEL POST WITH BRASS CAP STAMPED "SCE PROP COR. 2012, LS 4428" IN DIRT, NO REFERENCE, LYING S63°43'42"E 70.63 FEET FROM THE ESTABLISHED SOUTH 1/16 CORNER BETWEEN SECTION 11 & 12, NOT UTILIZED IN THE COURSE OF THIS SURVEY.
- 17 FOUND 2 1/2" STEEL POST WITH BRASS CAP STAMPED "RCE 7211 5FT RP" IN DIRT, PER R2, LYING N44°04'10"W 41.67 FEET FROM THE ESTABLISHED SOUTH 1/16 CORNER BETWEEN SECTION 11 & 12, NOT UTILIZED IN THE COURSE OF THIS SURVEY.
- 18 FOUND 2 1/2" STEEL POST WITH BRASS CAP STAMPED "RCE 7211 5FT RP" IN DIRT, PER R2, LYING N53°43'06"W 42.15 FEET FROM THE ESTABLISHED SOUTH 1/16 CORNER BETWEEN SECTION 11 & 12, NOT UTILIZED IN THE COURSE OF THIS SURVEY.
- 19 FOUND 3"X3" WOOD POST WITH TAG STAMPED "1 FOOT TO MON" IN DIRT, UP 2.2' LYING N48°29'29"W 90.42 FEET TO MONUMENT [20], NOT UTILIZED IN THE COURSE OF THIS SURVEY.
- 20 FOUND 2 1/2" STEEL POST WITH BRASS CAP STAMPED "BLM T2N R25E S11 S12 S14 S13 1999" IN DIRT, UP 0.2' ACCEPTED AS THE NORTHWEST CORNER OF SECTION 13 PER R5 AND R10.
- 21 FOUND 2" IRON PIPE WITH TAG STAMPED "RCE 10467" IN DIRT, PER R4, LYING N48°22'48"W 18.61 FEET OF MONUMENT [22], ESTABLISHED ERRONEOUSLY, NOT UTILIZED IN THE COURSE OF THIS SURVEY.
- 22 FOUND 2 1/2" STEEL POST WITH BRASS CAP STAMPED "BLM NE-NW 1/64 S13 1999" IN DIRT, UP 0.2', ACCEPTED AS THE CENTER CORNER OF THE NE 1/4 OF THE NW 1/4 SECTION 13 PER R5.
- 23 FOUND 2 1/2" STEEL POST WITH BRASS CAP STAMPED "RCE 10467" IN DIRT, PER R4, LYING 5.65 FEET NORTH OF SECTION LINE AND N87°34'16"E 313.74 FEET OF MONUMENT [22], ESTABLISHED ERRONEOUSLY, NOT UTILIZED IN THE COURSE OF THIS SURVEY.
- 24 FOUND 2" IRON PIPE WITH TAG STAMPED "RCE 10467" IN DIRT, PER R4, LYING 5.36 FEET NORTH OF SECTION LINE AND N87°39'55"E 327.55 FEET OF MONUMENT [22], ESTABLISHED ERRONEOUSLY, NOT UTILIZED IN THE COURSE OF THIS SURVEY.
- 25 FOUND 2 1/2" STEEL POST WITH BRASS CAP STAMPED "BLM C-E-NW 1/64 S13 1999" IN DIRT, ACCEPTED AS THE CENTER-EAST-SOUTHWEST-NORTHWEST 1/64 CORNER PER R5.
- 26 FOUND 2" IRON PIPE WITH TAG STAMPED "RCE 10467" IN DIRT, PER R4, LYING N49°15'35"W 11.17 FEET OF MONUMENT [25], ESTABLISHED ERRONEOUSLY, NOT UTILIZED IN THE COURSE OF THIS SURVEY.
- 27 FOUND 2" IRON PIPE WITH TAG STAMPED "RCE 10467" IN DIRT, PER R4, LYING 11.23 FEET NORTH OF SECTION LINE AND N86°47'19"E 310.63 FEET OF MONUMENT [28], ESTABLISHED ERRONEOUSLY, NOT UTILIZED IN THE COURSE OF THIS SURVEY.
- 28 FOUND 2 1/2" STEEL POST WITH BRASS CAP STAMPED "BLM NW 1/16 S13 1999" IN DIRT, UP 0.2', ACCEPTED AS THE NORTHWEST 1/16 SECTION CORNER PER R5 AND R10.
- 29 FOUND 2" IRON PIPE WITH TAG STAMPED "RCE 10467" IN DIRT, PER R4, LYING N49°16'39"W 22.08 FEET OF MONUMENT [28], ESTABLISHED ERRONEOUSLY, NOT UTILIZED IN THE COURSE OF THIS SURVEY.
- 30 FOUND 2 1/2" STEEL POST WITH BRASS CAP STAMPED "BLM C-S-NW 1/64 S13 1999" IN DIRT, ACCEPTED AS CENTER-SOUTH-NORTHWEST 1/64 SECTION CORNER OF SECTION 13 PER R5 AND R10.
- 31 FOUND 2" IRON PIPE WITH TAG STAMPED "RCE 10467" IN DIRT, PER R4, LYING 9.41 FEET NORTH OF SECTION LINE AND N87°22'59"E 316.08 FEET TO MONUMENT [32], ESTABLISHED ERRONEOUSLY, NOT UTILIZED IN THE COURSE OF THIS SURVEY.
- 32 FOUND 2 1/2" STEEL POST WITH BRASS CAP STAMPED "BLM SW-NW 1/64 S13 1999", FLUSH, ACCEPTED AS SOUTHWEST-NORTHWEST 1/64 CORNER OF SECTION 13 PER R5 AND R10.
- 33 FOUND 2" IRON PIPE WITH TAG STAMPED "RCE 10467" IN DIRT, UP 0.3' PER R4, LYING N48°25'02"W 16.89 FEET TO MONUMENT [32], ESTABLISHED ERRONEOUSLY, NOT UTILIZED IN THE COURSE OF THIS SURVEY.
- 34 FOUND 2 1/2" STEEL POST WITH BRASS CAP STAMPED "BLM T2N R25E 1/4 S14 S13 1999" IN DIRT, ACCEPTED AS WEST 1/4 CORNER OF SECTION 13 PER R5.
- 35 FOUND 2 1/2" STEEL POST WITH BRASS CAP STAMPED "BLM C-W-W 1/64 S13 1999" IN DIRT, ACCEPTED AS CENTER-WEST-WEST 1/64 SECTION CORNER OF SECTION 13 PER R5 AND R10.
- 36 FOUND 2 1/2" STEEL POST WITH BRASS CAP STAMPED "BLM C-W 1/16 S13 1999" IN DIRT, ACCEPTED AS CENTER WEST 1/16 SECTION CORNER OF SECTION 13 PER R5 AND R10.

### MONUMENT NOTES

- 37 FOUND 2" IRON PIPE WITH TAG STAMPED "RCE 10467" IN DIRT, PER R4, LYING N01°37'35"W 333.04' TO MONUMENT [38], ESTABLISHED ERRONEOUSLY, NOT UTILIZED IN THE COURSE OF THIS SURVEY.
- 38 FOUND 2 1/2" STEEL POST WITH BRASS CAP STAMPED "BLM C-E-W 1/64 S13 1999" IN DIRT, ACCEPTED AS CENTER-EAST-WEST 1/64 SECTION CORNER OF SECTION 13 PER R5 AND R10.
- 39 FOUND 2" IRON PIPE WITH TAG STAMPED "RCE 10467" IN DIRT, UP 0.3' PER R4, LYING S01°41'40"E 661.16 FEET TO MONUMENT [38], ESTABLISHED ERRONEOUSLY, NOT UTILIZED IN THE COURSE OF THIS SURVEY.
- 40 FOUND 2" IRON PIPE WITH TAG STAMPED "RCE 10467" IN DIRT, PER R4, LYING N89°02'16"E 660.44 FEET TO MONUMENT [41], ESTABLISHED ERRONEOUSLY, NOT UTILIZED IN THE COURSE OF THIS SURVEY.
- 41 FOUND 2" IRON PIPE WITH TAG STAMPED "RCE 10467" IN DIRT, PER R4, LYING ON THE WEST LINE OF SECTION 13, NOT UTILIZED IN THE COURSE OF THIS SURVEY.
- 42 FOUND 2 1/2" STEEL POST WITH BRASS CAP STAMPED "BLM T2N R25E S14 S13 S24 1999" IN DIRT, ACCEPTED AS SOUTHWEST CORNER OF SECTION 13 PER R5 AND R10.
- 43 FOUND 2 1/2" STEEL POST WITH BRASS CAP STAMPED "BLM T2N R25E 1/4 S13 S24 1999" IN DIRT, ACCEPTED AS THE SOUTH 1/4 CORNER OF SECTION 13 PER R4, R5 AND R10.
- 44 FOUND 2 1/2" STEEL POST WITH BRASS CAP STAMPED "BLM T2N R25E R26E S13 S18 S24 S19 1999" IN DIRT, ACCEPTED AS THE SOUTHEAST CORNER OF SECTION 13 PER R4, R5 AND R10.
- 45 FOUND 2 1/2" STEEL POST WITH BRASS CAP STAMPED "BLM T2N R25E R26E 1/4 S13 S18 1999" IN DIRT, UP 0.3', ACCEPTED AS THE EAST 1/4 CORNER OF SECTION 13 PER R5 AND R10.
- 46 FOUND 2 1/2" STEEL POST WITH BRASS CAP STAMPED "BLM C-S-S-N 1/256 S13 1999" IN DIRT, ACCEPTED AS THE CENTER-SOUTH-SOUTH-NORTH 1/256 SECTION CORNER OF SECTION 13 PER R5 AND R10.
- 47 FOUND 2 1/2" STEEL POST WITH BRASS CAP STAMPED "BLM C-S-N 1/64 S13 1999" IN DIRT, ACCEPTED AS THE CENTER-SOUTH-NORTH 1/64 SECTION CORNER OF SECTION 13 PER R5 AND R10.
- 48 FOUND 1" IRON PIPE WITH TAG STAMPED "RCE 27104" IN DIRT, PER R3.
- 49 FOUND 1" IRON PIPE WITH TAG STAMPED "RCE 27104" IN DIRT, PER R3.
- 50 FOUND NAIL & TAG STAMPED "RCE 27104" IN ROCK OUTCROPPING PER R3.
- 51 FOUND 1" IRON PIPE WITH TAG STAMPED "RCE 27104" IN DIRT, PER R3.
- 52 FOUND 1" IRON PIPE WITH TAG STAMPED "RCE 27104" IN DIRT, PER R3.
- 53 FOUND 1" IRON PIPE WITH TAG STAMPED "RCE 27104" IN DIRT, PER R3.
- 54 FOUND 2 1/2" STEEL POST WITH BRASS CAP STAMPED "BLM N-N 1/64 S13 S18 1999" IN DIRT, ACCEPTED AS THE NORTH-NORTH 1/64 SECTION CORNER OF SECTION 13 PER R3 AND R5.
- 55 FOUND 2 1/2" STEEL POST WITH BRASS CAP STAMPED "BLM T2N R26E AP 17 S19 1999" IN DIRT, PER R6.
- 56 FOUND CONCRETE POST IN DIRT, UP 0.3', FLUSH PER R6.
- 57 FOUND 2 1/2" STEEL POST WITH BRASS CAP STAMPED "BLM T2N R25E R26E S12 S7 1999" IN DIRT, LYING ON THE EAST LINE OF SECTION 12, PER R9 AND R11.
- 58 FOUND 2 1/2" STEEL POST WITH BRASS CAP STAMPED "BLM T2N R25E R26E S12 S7 1999" IN DIRT, LYING ON THE EAST LINE OF SECTION 12, PER R9 AND R11.
- 59 FOUND CONCRETE POST IN DIRT, UP 0.3', FLUSH PER R6.
- 60 FOUND 2 1/2" STEEL POST WITH BRASS CAP STAMPED "BLM T2N R26E S7 1999" IN DIRT, ACCEPTED AS POINT ON CALTRANS ROW "AP 22", PER R9 AND R11.
- 61 FOUND 120 D NAIL IN DIRT, DOWN 1.0' NO REFERENCE, LYING N48°05'41"W 89.99 FEET TO MONUMENT [20], NOT UTILIZED IN THE COURSE OF THIS SURVEY.
- 62 FOUND 2 1/2" STEEL POST WITH BRASS CAP STAMPED "BLM T2N R25E R26E S1 S6 S12 S7 1999" IN DIRT, FLUSH, ACCEPTED AS THE NORTHEAST CORNER OF SECTION 12 PER R9 & R11.
- 63 FOUND 2 1/2" STEEL POST WITH BRASS CAP STAMPED "BLM EW 1/64 S12 S13 1999", IN DIRT, FLUSH, ACCEPTED AS THE EAST-WEST 1/64 SECTION CORNER OF SECTIONS 12 & 13 PER R5 & R10.
- 64 FOUND 2 1/2" STEEL POST WITH BRASS CAP STAMPED "BLM C-N-N 1/64 S13 1999", DESTROYED, POST LYING ON ITS SIDE, NOT UTILIZED IN THE COURSE OF THIS SURVEY, BOTTOM OF PIPE LYING 0.40 FEET SOUTH OF THE ESTABLISHED CENTER-NORTH-NORTH 1/64 CORNER OF SECTION 13.

### RECORD REFERENCES

- () = INDICATES RECORD INFORMATION AS NOTED.
- { } = INDICATES GRID DISTANCE.
- M&R = INDICATES MEASURE AND RECORD AS NOTED.
- R1 = RECORD OF SURVEY MAP NO. 34-59 FILED ON FEBRUARY 2, 1995 IN BOOK 3 OF RECORD OF SURVEYS AT PAGE 20.
- R2 = RECORD OF SURVEY MAP FILED ON AUGUST 22, 1963 IN BOOK 5 OF RECORD OF SURVEYS AT PAGES 125-125C.
- R3 = RECORD OF SURVEY MAP NO. 34-12 FILED ON APRIL 15, 1981 IN BOOK 1 OF RECORD OF SURVEYS AT PAGES 68-68D.
- R4 = FINAL MAP NO. 34-3 FILED ON FEBRUARY 9, 1971 IN BOOK 2 OF PARCEL MAPS AT PAGES 57-57D.
- R5 = UNITED STATES DEPARTMENT OF THE INTERIOR BUREAU OF LAND MANAGEMENT PLAT OF THE DEPENDENT RESURVEY OF SECTION 13, T2N, R25E, M.D.B.&M, GROUP NO. 1338, ACCEPTED JULY 26, 2002.
- R6 = RECORD OF SURVEY MAP NO. 34-60 FILED ON NOVEMBER 22, 1994 IN BOOK 3 OF RECORD OF SURVEYS AT PAGE 15-15G.
- R7 = CORNER RECORD FILED ON DECEMBER, 2010 IN DOCUMENT NO. 2N25-12-01.
- R8 = CORNER RECORD FILED ON DECEMBER, 2010 IN DOCUMENT NO. 2N25-12-02.
- R9 = UNITED STATES DEPARTMENT OF THE INTERIOR BUREAU OF LAND MANAGEMENT PLAT OF THE DEPENDENT RESURVEY OF SECTION 7 AND 18, T2N, R26E, M.D.B.&M, GROUP NO. 1284, ACCEPTED AUGUST 1, 2002.
- R10 = UNITED STATES DEPARTMENT OF THE INTERIOR BUREAU OF LAND MANAGEMENT FIELD NOTES OF THE DEPENDENT RESURVEY OF SECTION 13, T2N, R25E, M.D.B.&M, GROUP NO. 1338, ACCEPTED JULY 26, 2002.
- R11 = UNITED STATES DEPARTMENT OF THE INTERIOR BUREAU OF LAND MANAGEMENT FIELD NOTES OF THE DEPENDENT RESURVEY OF SECTION 7 AND 18, T2N, R26E, M.D.B.&M, GROUP NO. 1284, ACCEPTED AUGUST 1, 2002.

### ESTABLISHMENT NOTES

- A - ESTABLISHED BY SINGLE PROPORTION PER R5, NOTHING SET.
- B - ESTABLISHED BY INTERSECTION, NOTHING SET.
- C - SFN, ESTABLISHED THE S 1/16 BETWEEN SECTIONS 11 & 12 AT THE MIDPOINT OF THE W LINE OF THE SW 1/4 OF SECTION 12, NOTHING SET.
- D - ESTABLISHED THE N 1/16 BETWEEN SECTIONS 11 & 12 AT THE MIDPOINT OF THE W LINE OF THE NW 1/4 OF SECTION 12, NOTHING SET.
- E - ESTABLISHED THE N 1/16 BETWEEN NE 1/4 AND NW 1/4 SECTION 12 AT THE MIDPOINT OF THE W LINE OF THE NE 1/4 OF SECTION 12, NOTHING SET.

