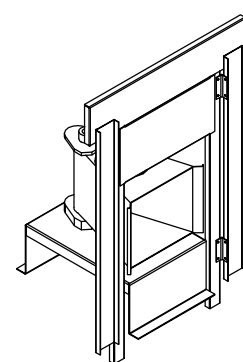
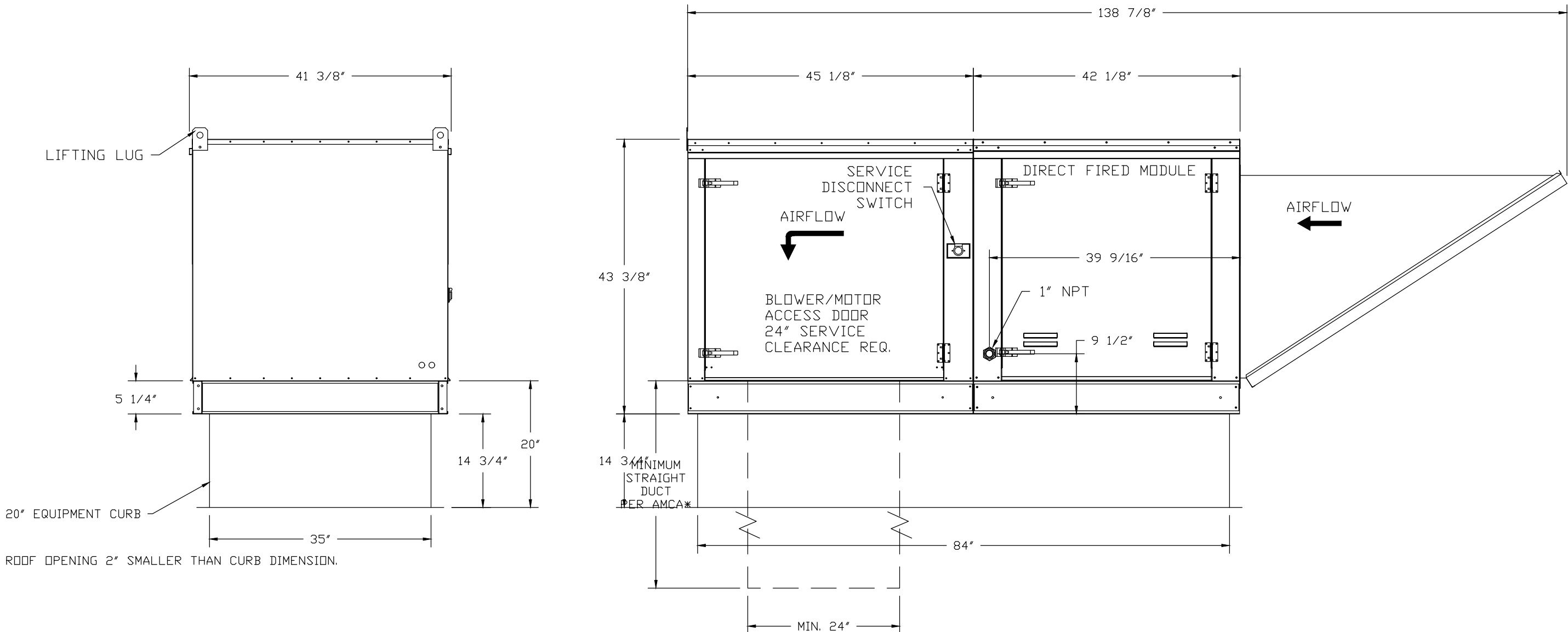
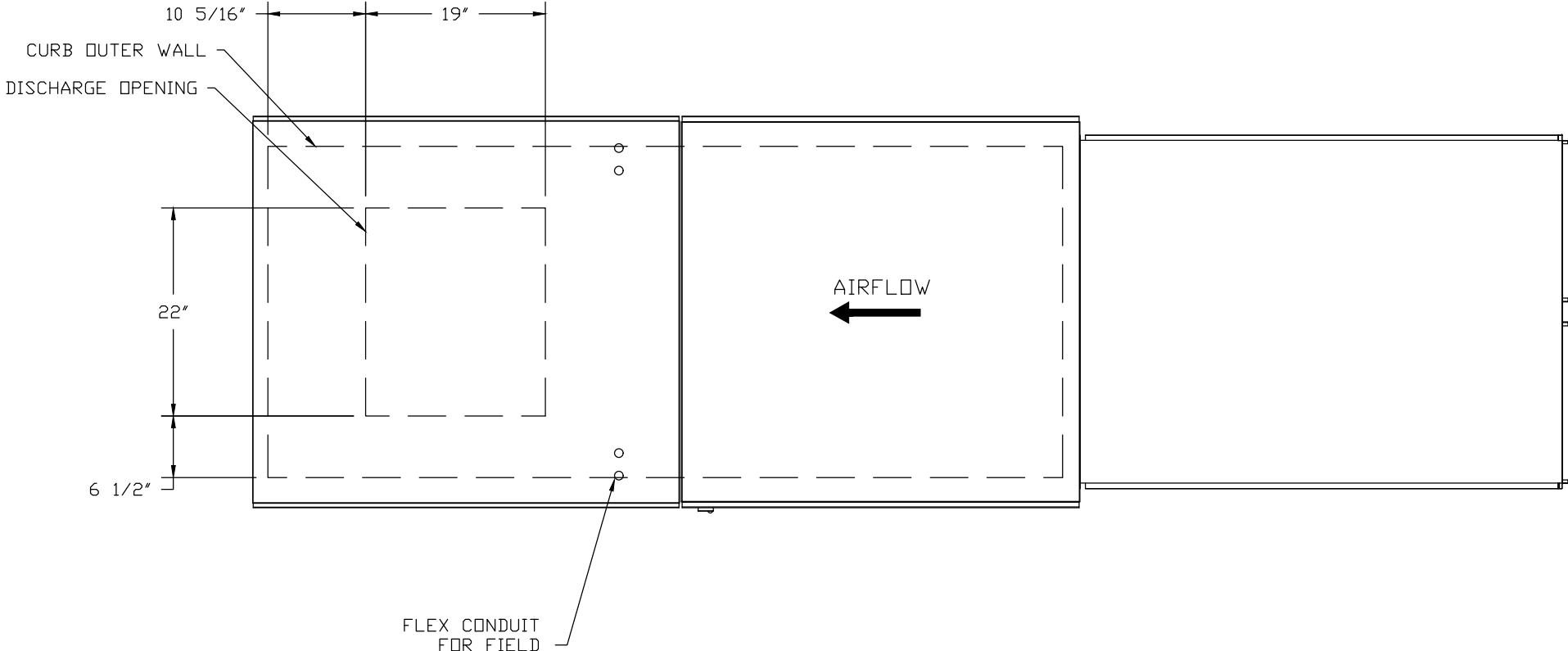


FAN #4 EA3-D500-G18 - HEATER  
1. DIRECT GAS FIRED HEATED MAKE UP AIR UNIT WITH 18" BLOWER AND 12" BURNER.  
2. INTAKE HOOD WITH EZ FILTERS.  
3. DOWN DISCHARGE - AIR FLOW RIGHT -> LEFT  
4. COOLING INTERLOCK RELAY - 24VAC COIL - 120V CONTACTS. LOCKS OUT BURNER CIRCUIT WHEN AC IS ENERGIZED.  
5. LOW FIRE START. ALLOWS THE BURNER CIRCUIT TO ENERGIZE WHEN THE MODULATION CONTROL IS IN A LOW FIRE POSITION.  
6. GAS PRESSURE GAUGE, 0-35", 2.5" DIAMETER, 1/4" THREAD SIZE  
7. GAS PRESSURE GAUGE, -5 TO +15 INCHES WC, 2.5" DIAMETER, 1/4" THREAD SIZE  
8. MOTORIZED BACK DRAFT DAMPER 30" X 30" FOR SIZE 3 STANDARD & MODULAR HEATER UNITS W/EXTENDED SHAFT, STANDARD GALVANIZED CONSTRUCTION, 3/4" REAR FLANGE, LOW LEAKAGE, NFPA-3 ACTUATOR INCLUDED  
9. VAV (VARIABLE-AIR-VOLUME) WIRING PACKAGE FOR COMMERCIAL FANS.  
10. MANUAL SPEED CONTROL VARIABLE FREQUENCY DRIVE INCLUDED  
11. VFD FACTORY MOUNTED AND WIRED IN UNIT CONTROL VESTIBULE.

\*NOTE: SUPPLY DUCT MUST BE INSTALLED TO MEET SMACNA STANDARDS. A MINIMUM STRAIGHT DUCT LENGTH MUST BE MAINTAINED DOWNSTREAM OF UNIT DISCHARGE AS OUTLINED IN AMCA PUBLICATION 201. DO NOT RELY ON UNIT TO SUPPORT DUCT IN ANY WAY. FAILURE TO PROPERLY SIZE DUCTWORK MAY CAUSE SYSTEM EFFECTS AND REDUCE PERFORMANCE OF THE EQUIPMENT.  
SUGGESTED STRAIGHT DUCT SIZE IS 24" x 24"

SUPPLY SIDE HEATER INFORMATION:

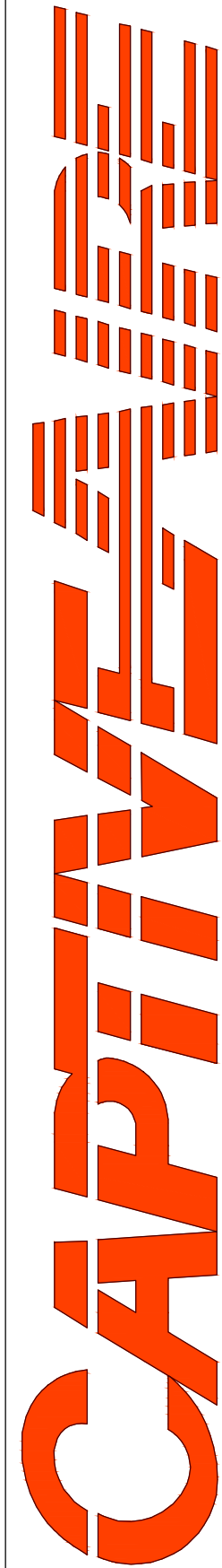
WINTER TEMPERATURE = 10°F. TEMP. RISE = 100°F.  
BTUs CALCULATED OFF ACTUAL AIR DENSITY  
OUTPUT BTUs AT ALTITUDE OF 0.0 ft. = 477286  
INPUT BTUs AT ALTITUDE OF 0.0 ft. = 518789



Direct Fired (DF) Profile Plate Assembly

**Direct Fired Profile Plate Specifications:**  
**Description:**  
Direct Fired burners shall have patented US Patent No. US6629533B2, self-adjusting profile plates designed to ensure proper air velocity and pressure drop across the burner. Profile plates shall allow burners to achieve clean combustion by limiting by-product levels to a maximum of 50ppm of carbon monoxide (CO) and 50ppm of nitrogen dioxide (NO2). Direct Fired units shall be configured with the blower mounted downstream of the burner. This arrangement will ensure a consistent airflow, regardless of inlet air temperature.  
**Application:**  
Spring-loaded burner profile plates are engineered to automatically react to the momentum of a fresh air stream, without the need for any motors or actuators to mechanically adjust them. With this feature, all DF units are designed for demand control ventilation (DCV) requirements.  
**Verifications:**  
All profile plate assemblies shall be included in the DF unit's ETL listing and comply with combined safety standards ANSI Z83.4 and CSA 3.7 (non-recirculating DF heaters) and ANSI Z83.18 (recirculating DF heaters).  
**General Construction:**  
-Profile plates shall be formed from G90 galvanized steel.  
-Profile plates shall vary in size per unit.  
-Profile plates shall be mounted along the same plane as the discharge of the burner.  
-Design shall incorporate properly torqued, permanently mounted spring hinges.  
-Spring hinges shall be made from plated steel.

REVISIONS	
DESCRIPTION	DATE



3002 Dow Ave., Suite 410, Tustin, CA 92780 PHONE: (714) 957-1500 FAX: (919) 227-5975 EMAIL: reg86@captiveaire.com

Panda Express - Fairfax VA (D7446)

DATE: 12/18/2019

DWG.#:  
4127861

DRAWN BY:  
AH-86

SCALE:  
3/4" = 1'-0"

MASTER DRAWING

SHEET NO.  
4



PANDA EXPRESS, INC.  
1683 Walnut Grove Ave.  
Rosemead, California  
91770  
Telephone: 626.799.9898  
Facsimile: 626.372.8288

All ideas, designs, arrangement and plans indicated or represented by this drawing are the property of Panda Express Inc. and were created for use on this specific project. None of these ideas, designs, arrangements or plans may be used by or disclosed to any person, firm, or corporation without the written permission of Panda Express Inc.

REVISIONS:

ISSUE DATE:

PEER REVIEW	01-27-2020
PR RESPONSE 1	02-21-2020
BUILDING PERMIT	03-11-2020

DRAWN BY: J. DESKINS

PANDA PROJECT #: D7446  
ARCH PROJECT #: JCDT19-0314

FOR INFORMATION ONLY

**NORR**  
ARCHITECTS ENGINEERS PLANNERS

**PANDA EXPRESS**

GREENBRIAR TOWN CENTER,  
13059 LEE JACKSON MEMORIAL HWY  
FAIRFAX, VA 22033

**M-403**

HOOD DETAIL PLAN