



## D2 Structure illustration & folding instructions

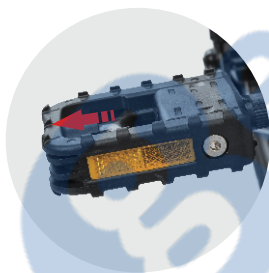
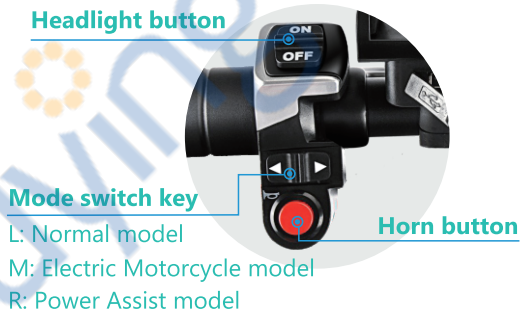
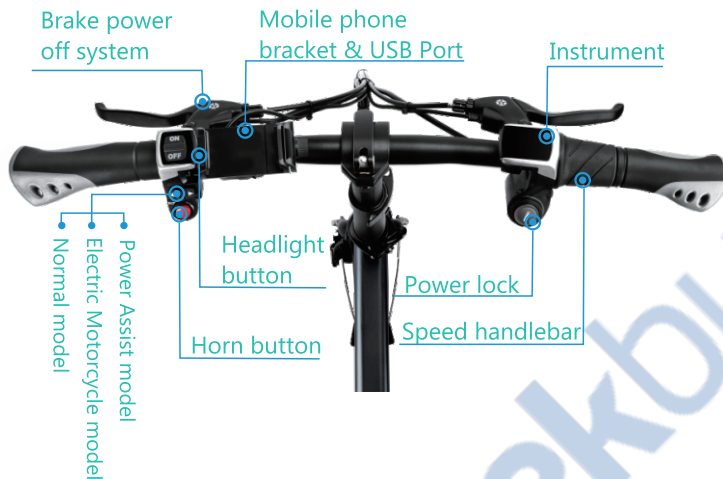
**Shenzhen QLHX Technology Co., Ltd.**

4/F, Building 2, No.13, Pingji Road, Longgang District, Shenzhen, Guangdong, China

CE   
**Made in China**

# Structure illustration





Hold and press with your fingers, folding the Pedal.



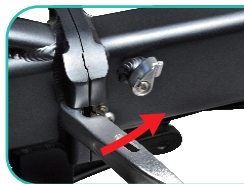
Battery charging port  
(located below the main beam of the frame)

# Unfolding instructions

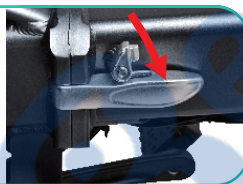
1. Unfold the frame, lock the frame folding handle, and lock the frame folder safety clasp.
2. Fold the riser to the upper end, lock the riser folding handle, adjust the riser safety hook to the tightening state, and adjust the position of the T handle.
3. Open the clip on the seat tube clamp and insert the seat tube into the position within the marking line on the seat tube. Adjust the seat to the comfortable height according to individual needs, and fasten the seat tube clip.



Please confirm the following items before riding: frame lock, standpipe lock and seat tube lock are locked. Brake system is normal. Tires are adequately inflated. All these are important for a safe and comfortable riding.



opened



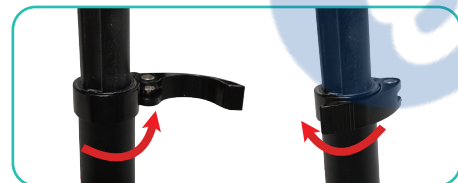
locked



opened



locked



The insertion depth must be higher than the tick mark



Adjusting the handle

## Folding instructions

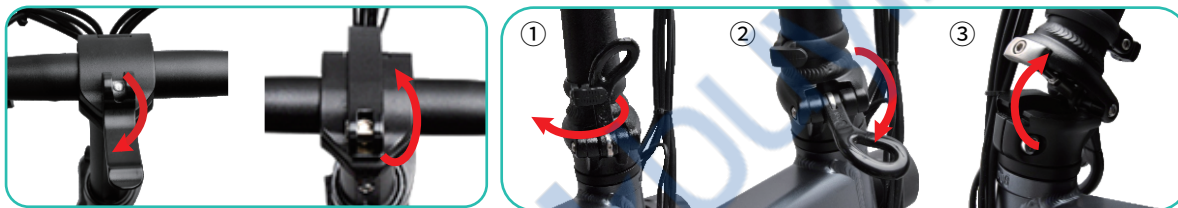
Step 1. Open the quick lock on the head end, to let the handle be perpendicular to the care frame.

Step 2. Open the quick lock on the Stem, lower the riser, as well as locking the quick lock.

Step 3. Open the Seat Tube quick lock, decentralized seats, as well as locking the quick lock.

Note:

Both the Riser and the Seat Tube are marked with a safe scale (MAX or MIN). For safety reasons, please use them in a safe range.



Step 4. Turn the buckle on the Standpipe clockwise and pull down the fold and fold down the front.

Step 5. Open the frame holder of the fuse buckle, pull the fold, and fold the frame.



## Product parameters

Name	Specification
Frame Material	Aluminium Alloy
Wheel Size	16"
Rear suspension	Support
Electric Bi ke System	FIIDO System
Max Speed	25KM/H
Maximun Range	<b>Power assisted models up to 60KM</b>
Battery	36V 7.8Ah High quality lion battery
Recharge Time	5 hours
Front Brake	Mechanical Disc Brakes
Brake Type	Mechanical Disc Brakes
Chainset	Prowheel Steel 52-tooth
Free wheel	12-tooth
Pedals Included	Yes
Chain	<b>KMC S1 RB</b>
Rear Hub/ Rated Power	<b>XiongDa Motor /250w</b>
Handlebars	Aluminium Alloy
Pedals	Alloy
Rear Brake	Mechanical Disc Brakes
Rims	Alloy
Tyres	Cheng Shin Tire (16" x 1.95)
Net Weight	19.5KG
Folded Size	75CM*35CM*65CM
Size	135CM*40CM*110CM
Gross Weight	About 24KG
Pack Size	80CM*43CM*60CM

\* The above data allow for 5% manufacturing tolerances.

\* After receiving the goods, there may be some differences between individual accessories and display drawings, which are different due to the different batches, and do not affect the use.