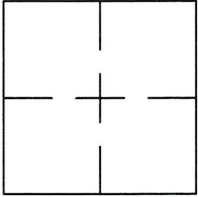


CORNER RECORDDocument Number CR 9876City of BERKELEYCounty of ALAMEDA, CaliforniaBrief Legal Description WELL MONUMENT LOCATED WITHIN CLAREMONT BOULEVARD (COB B1847)**CORNER RECORD**

Government Corner ☐ Control ☒
 Meander ☐ Property ☐
 Rancho ☐ Other ☐
 Date of Survey 3/9/2017

COORDINATES
(Optional)

N. _____
 E. _____
 Zone _____ Datum _____
 Elev. _____

Corner — Left as found ☐ Found and tagged ☐ Established ☐ Reestablished ☒ Rebuilt ☐

Identification and type of corner found: Evidence used to identify or procedure used to establish of reestablish the corner:
BRASS DISK WITH PUNCH STAMPED LS 8525 IN STANDARD MONUMENT WELL LOCATED WITHIN CLAREMONT
BOULEVARD ADJACENT TO 2810 CLAREMONT BOULEVARD.

THIS POINT INSTALLED AFTER A CONSTRUCTION PROJECT IN THE VICINITY.

A description of the physical condition of the monument as found and as set or reset: _____
FOUND AND SET POINTS AS SHOWN ON PAGE 2.

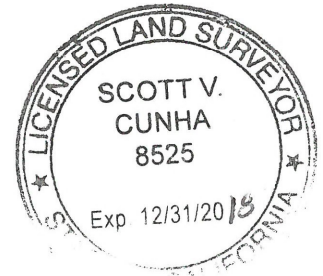
THE TIES SHOWN HEREON ARE FOR THE PURPOSE OF PERPETUATING FOUND MONUMENTATION.

NO CLAIM IS MADE AS TO THE RELATIONSHIP OF THE POINTS OR LINES SHOWN HEREON TO
TRUE BOUNDARY LOCATIONS.

SURVEYOR'S STATEMENT

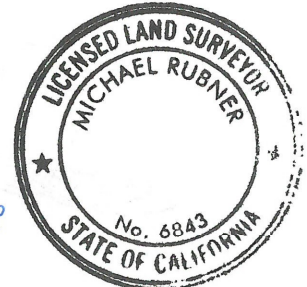
This Corner Record was prepared by me or under my direction in conformance with
 the Land Surveyors' Act on MARCH 18, 2017.

Signed Scott V. Cunha L.S. Number LS 8525
SCOTT V. CUNHA

**COUNTY SURVEYOR'S STATEMENT**

This Corner Record was received 24 MARCH 2017 and examined
 and filed 9 JUNE 2017.

Signed Michael Rubner Title COUNTY SURVEYOR

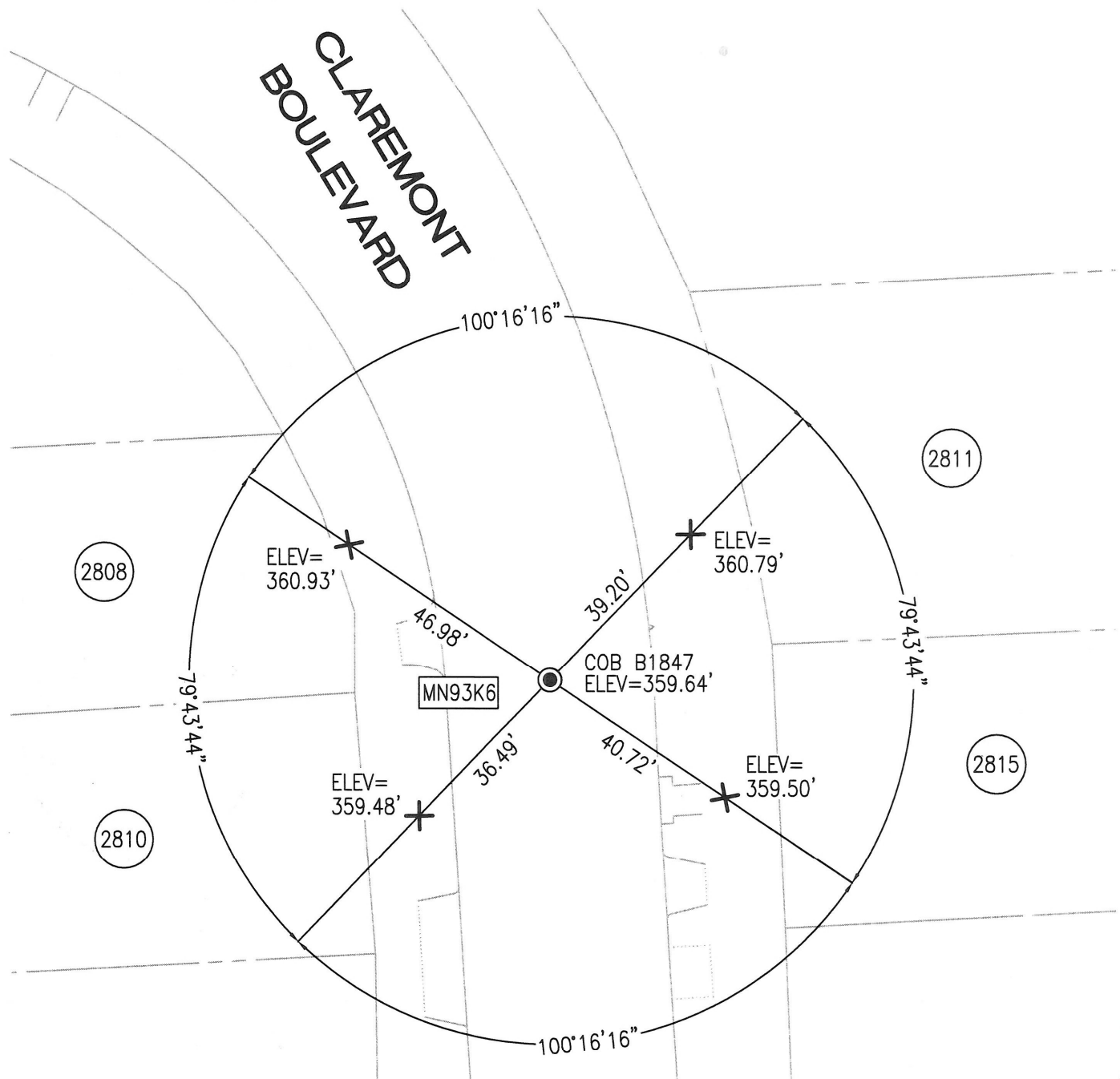


County Surveyor's Comment _____



LEGEND

- SET BRASS DISK WITH PUNCH STAMPED LS 8525
IN STANDARD MONUMENT WELL (COB B1847)
- ✕ FOUND CUT CROSS IN CONCRETE PER CR 8472 (81 CR 45)
- COB CITY OF BERKELEY
- AA##A# ALAMEDA COUNTY MONUMENT ID



NOTE

ELEVATIONS SHOWN HEREON BASED UPON CITY OF BERKELEY VERTICAL DATUM. COB B1847 PER CR8472 (81 CR 45) TAKEN AS ELEV=359.23'

