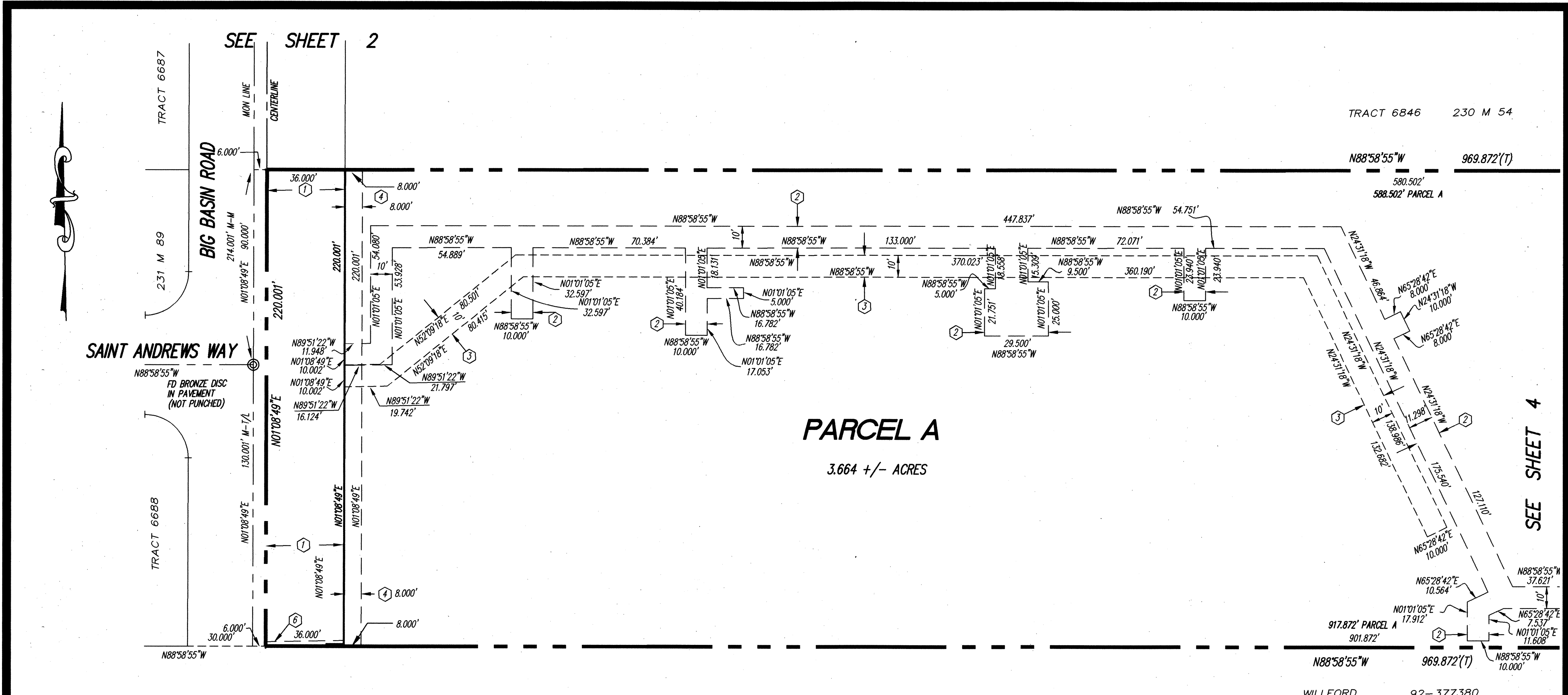


PM 7244

Map BK 243 PG 56



PARCEL A
3.664 +/- ACRES

BASIS OF BEARINGS

BEARINGS SHOWN HEREON ARE BASED UPON FOUND MONUMENTS IN SCENIC AVENUE SHOWN ON THE MAP OF TRACT 6846 (230 M 58) AS N88°58'55"W.

EASEMENT SCHEDULE

- ① DEDICATED TO THE CITY OF LIVERMORE FOR PUBLIC HIGHWAY PURPOSES "BIG BASIN ROAD"
- ② WATER EASEMENT DEDICATED TO THE CITY OF LIVERMORE FOR WATER LINE PURPOSES (WLE)
- ③ SANITARY SEWER EASEMENT DEDICATED TO THE CITY OF LIVERMORE FOR SANITARY SEWER PURPOSES (SSE)
- ④ PUBLIC UTILITY AND SIDEWALK EASEMENT DEDICATED TO THE CITY OF LIVERMORE FOR PUBLIC UTILITY AND SIDEWALK PURPOSES (PUE)
- ⑤ PRIVATE STORM DRAIN EASEMENT (PSDE)
- ⑥ (1') ONE FOOT WIDE ACCESS RESERVE STRIP
- ⑦ DEDICATED TO THE CITY OF LIVERMORE FOR PUBLIC HIGHWAY PURPOSES "HERMAN AVENUE"

LEGEND

- TRACT LINE
- CENTERLINE
- MONUMENT LINE
- LOT LINE
- EASEMENT LINE
- FOUND STREET MONUMENT, AS NOTED
- FOUND STREET MONUMENT
- CONCRETE TOTAL
- MONUMENT
- FOUND NAIL, AS NOTED
- SET 1/2" REBAR WITH PLASTIC CAP LS 4367
- PUBLIC UTILITY AND SIDEWALK EASEMENT
- SANITARY SEWER EASEMENT
- WATERLINE EASEMENT
- PRIVATE STORM DRAIN EASEMENT
- MONUMENT TO MONUMENT
- MONUMENT TO TRACT LINE
- FD
- ST MON
- CONC
- T
- MON
-
- PUE
- SSE
- WLE
- PSDE
- M-M
- M-T/L

NOTES:

- 1. CALCULATED DIMENSIONS ARE SHOWN HEREON TO THE NEAREST ONE-THOUSANDTH OF A FOOT IN ORDER TO MAINTAIN CONFORMANCE WITH RECORDED MAPS IN THE VICINITY. SURVEYED DISTANCES ARE MEASURED TO THE NEAREST ONE-HUNDREDTH OF A FOOT.
- 2. A CHISELED MARK SHALL BE CUT INTO TOP OF CURB AT THE PROLONGATION OF THE LOT LINES, AND A REBAR AND CAP SHALL BE SET AT ALL NON-FRONTAGE CORNER AND ANGLE POINTS.

PARCEL MAP 7244

CITY OF LIVERMORE
ALAMEDA COUNTY - CALIFORNIA

BEING THAT REAL PROPERTY CONVEYED TO LIVERMORE HOUSING ASSOCIATES
BY DEED RECORDED JANUARY 29, 1998, AT SERIES 98-032964
ALAMEDA COUNTY RECORDS

PREPARED BY

Luk, Milani & Associates
MAY 1998
SCALE: 1"=30'

SHEET 3 OF 4