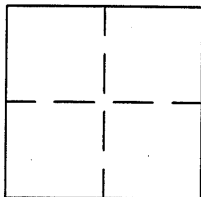


BK 16 pg 45

CORNER RECORD

APN No. _____ (Optional) Document Number CR - 1872
UNINCORPORATED County of ALAMEDA, California
Brief Legal Description RAILROAD SPIKE ON COLLEGE STREET EAST OF HESPERIAN BLVD.



CORNER TYPE

Government Corner ☐ Control ☐
Meander ☐ Property ☐
Rancho ☐ Other ☒
Date of Survey SEPT. 2002

COORDINATES (Optional)

N. _____
E. _____
Zone _____ Datum _____
Elev. _____

Corner - Left as found ☐ Found and tagged ☐ Established ☒ Reestablished ☐ Rebuilt ☐

In compliance with Section 8771 of the Professional Land Surveyors' Act, this corner record is being filed to
ESTABLISH X / REESTABLISH _____ the position of an existing monument PRIOR X / SUBSEQUENT _____
to street or highway reconstruction. (Use this portion only when applicable.)

Identification and type of corner found: Evidence used to identify or procedure used to establish or reestablish the corner:
THE CONTROL POINT DESCRIBED BELOW WAS REFERENCED BY TWO SET NAILS.

SEE DRAWING NEXT PAGE.

A description of the physical condition of the monument as found and as set or reset: A RAILROAD SPIKE WITH PUNCH WAS
FOUND IN GOOD CONDITION ON COLLEGE STREET 100+/- FEET EASTERLY OF HESPERIAN BLVD. THIS CONTROL POINT
IS IN DANGER OF BEING DESTROYED DUE TO ROAD CONSTRUCTION.

SURVEYOR'S STATEMENT

This Corner Record was prepared by me or under my direction in conformance with

the Land Surveyors' Act on 5/19/ 2003 .

Signed Gregory D. Hollfelder L.S. or R.C.E. Number 5918

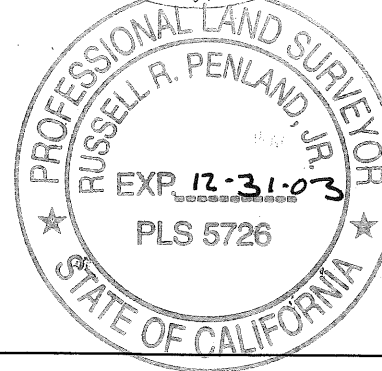
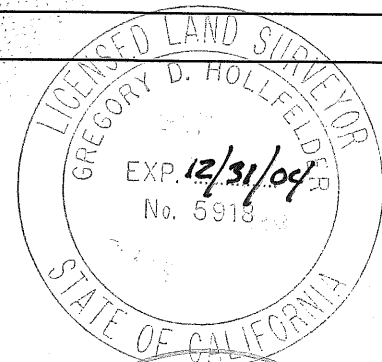
COUNTY SURVEYOR'S STATEMENT

This Corner Record was received 03-14 2003 and examined

and filed 11-04 2003 .

Signed Russell R. Penland, Jr. Title County Surveyor

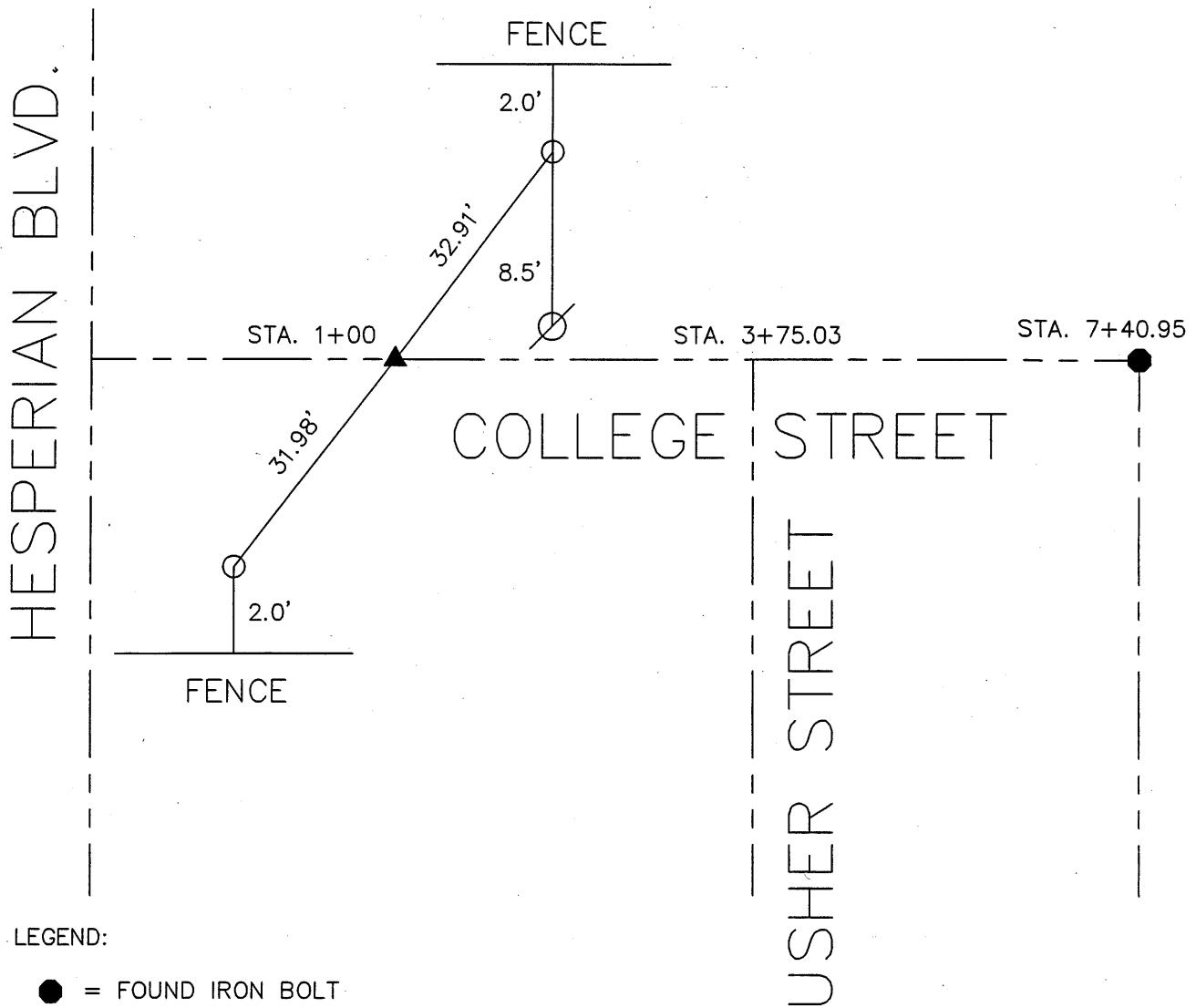
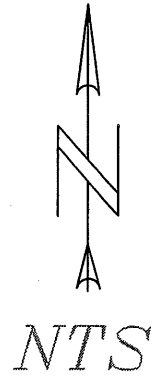
County Surveyor's Comment _____



REFERENCE: ALAMEDA COUNTY MAPS,

B-509

LL 509-1



LEGEND:

- = FOUND IRON BOLT
- ▲ = FOUND RAILROAD SPIKE WITH PUNCH
- = SET NAIL
- ⊗ = JP